



Bin Trim Rebates program

The NSW Environment Protection Authority (EPA) will help fund recycling equipment required by your business.

What sort of equipment is eligible?

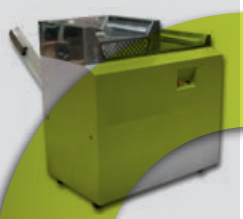
- Cardboard and plastic balers
- Expanded polystyrene compactors
- Source separation bins
- Commercial worm farms and composting units
- Organic dehydration units (conditions apply)
- Other (on application)

Who is eligible for a rebate?

- Small to medium sized businesses (SME) with up to 199 employees
- Facility managers responsible for SME waste
- Recyclers that are also SMEs

How much funding will the EPA provide?

Businesses can apply for rebates of between \$1000 and \$50,000, for up to 50 per cent of the cost of equipment, and for up to five sites. A maximum of \$250,000 is available for any one business over the life of the program.



How do I apply for a rebate?

Step 1 Read the Information for Rebate Applications

www.epa.nsw.gov.au/resources/managewaste/150743-bin-trim-rebate-guide.pdf

Step 2 Assess your waste and recycling needs and choose your equipment

The equipment must help you recycle more than you do.
For a free waste assessment or support contact:

- A Bin Trim assessor – www.epa.nsw.gov.au/managewaste/grantee-search.htm
- An Industrial Ecology Facilitator – www.epa.nsw.gov.au/managewaste/industrial-ecology.htm

Check with the EPA to see if your own waste data will support your application.

Step 3 Submit your Rebate application form

Your Bin Trim assessor or Industrial Ecology facilitator can help.

When can I buy my equipment?

Order and purchase your equipment after the EPA notifies you that your application is successful. A rebate is not awarded for equipment already purchased or where an agreement to purchase has been entered into, before you have been notified of the outcome of your application.

When will I receive my rebate?

If your rebate is valued at \$10,000 or under, you will receive the entire amount as soon as you have provided the EPA with proof of purchase. If your rebate is for over \$10,000, you will receive half on proof of purchase, and the other half once your assessor or facilitator lets the EPA know that the equipment is helping you to recycle more.

Further information

- Talk to your Bin Trim assessor or Circulate facilitator
- Email the EPA on bintrim.rebates@epa.nsw.gov.au
- Visit www.epa.nsw.gov.au/wastegrants/bin-trim-rebates.htm