



LAKE MACQUARIE – WYONG
REVIEW OF MONTHLY AMBIENT AIR
QUALITY DATA
NOVEMBER 2014

NSW Environment Protection Authority

1 July 2015

Job Number 14030303A

Prepared by

Todoroski Air Sciences Pty Ltd

Suite 2B, 14 Glen Street

Eastwood, NSW 2122

Phone: (02) 9874 2123

Fax: (02) 9874 2125

Email: info@airsciences.com.au

Lake Macquarie – Wyong

Review of Monthly Ambient Air Quality Data

November 2014

Author(s): Aleks Todoroski

Dan Kjellberg

Position: Director

Atmospheric Scientist

DOCUMENT CONTROL

Report Version	Date	Prepared by	Reviewed by
DRAFT – 001	16/06/2015	D. Kjellberg	
FINAL – 001	01/07/2015	D. Kjellberg	A. Todoroski

This report has been prepared in accordance with the scope of works between Todoroski Air Sciences Pty Ltd (TAS) and the client. TAS relies on and presumes accurate the information (or lack thereof) made available to it to conduct the work. If this is not the case, the findings of the report may change. TAS has applied the usual care and diligence of the profession prevailing at the time of preparing this report and commensurate with the information available. No other warranty or guarantee is implied in regard to the content and findings of the report. The report has been prepared exclusively for the use of the client, for the stated purpose and must be read in full. No responsibility is accepted for the use of the report or part thereof in any other context or by any third party.

TABLE OF CONTENTS

1	INTRODUCTION.....	1
2	PROJECT SCOPE.....	1
3	THE PURPOSE OF AMBIENT MONITORING.....	1
3.1	More about air quality	2
4	AIR QUALITY MONITORING SITES	3
5	AIR QUALITY CRITERIA.....	4
5.1	Particulate matter.....	4
5.1.1	PM _{2.5} concentrations	4
5.2	Other air pollutants.....	4
5.3	Summary of applicable criteria for this assessment.....	5
6	METEOROLOGICAL MONITORING DATA.....	5
7	AMBIENT AIR QUALITY MONITORING DATA	7
7.1	Preamble.....	7
7.2	Analysis of Monitoring Data	7
7.3	PM ₁₀	7
7.4	PM _{2.5}	8
7.5	Nitrogen dioxide NO ₂	8
7.6	Sulfur dioxide SO ₂	8
8	ANALYSIS OF ELEVATED POLLUTANT LEVELS.....	14
9	CONCLUSIONS.....	15
10	REFERENCES	16

LIST OF TABLES

Table 4-1: Monitoring sites	3
Table 5-1: EPA air quality impact assessment criteria.....	4
Table 5-2: Advisory standard for PM _{2.5} concentrations.....	4
Table 5-3: Air quality impact assessment criteria for air pollutants	5
Table 5-4: Air quality impact assessment criteria used in this assessment	5
Table 7-1: Maximum pollutant levels - November 2014	7

LIST OF FIGURES

Figure 4-1: Monitoring site locations	3
Figure 6-1: November windroses – Wallsend, Dora Creek, Marks Point, Wyee, Norah Head and Wyong	6
Figure 7-1: Lake Macquarie - Wyong 24-hour average PM ₁₀ levels – November 2014	10
Figure 7-2: Lake Macquarie - Wyong 24-hour average PM _{2.5} levels – November 2014.....	11
Figure 7-3: Lake Macquarie - Wyong 1-hour average NO ₂ levels – November 2014	12
Figure 7-4: Lake Macquarie - Wyong 1-hour average SO ₂ levels – November 2014	13

LIST OF APPENDICIES

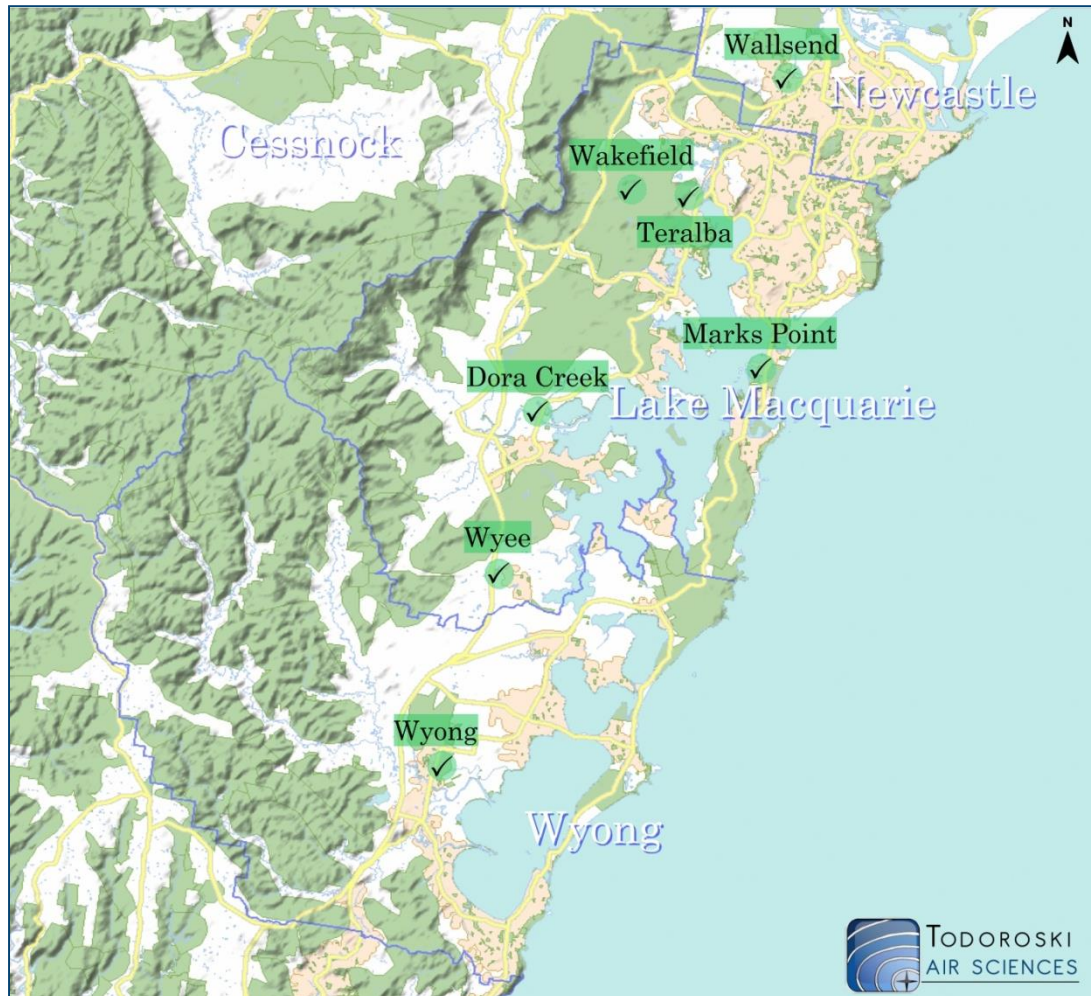
Appendix A – How to read a windrose	
Appendix B – Monitoring Data (Graphical)	
Appendix C – Monitoring Data (Tabulated)	

EXECUTIVE SUMMARY

This report has been prepared by Todoroski Air Sciences for the NSW Environment Protection Authority (NSW EPA) and presents ambient air quality monitoring data recorded in the Lake Macquarie - Wyong region for the month of November 2014. The results indicate that the air quality was generally very good in the Lake Macquarie - Wyong region during November.

The data summary (shown below) indicates that in November 2014, all data were below the applicable criteria. Further details are provided in the report. The 24-hour average data are provided in the Appendices.

Lake Macquarie - Wyong Air Quality Pictorial Summary - November 2014



Lake Macquarie – Wyong Air Quality Tabular Summary - November 2014

Site	PM ₁₀ (µg/m ³)	PM _{2.5} (µg/m ³)	SO ₂ (µg/m ³)	NO ₂ (µg/m ³)	SO ₂ (µg/m ³)
	24-hour average	24-hour average	24-hour average	1-hour average	1-hour average
	Air Quality Impact Criteria				
	50	25*	228	246	570
Wallsend	✓	✓	✓	✓	✓
Wyong	✓	✓	✓	✓	✓
Dora Creek	-	-	✓	✓	✓
Marks Point	-	-	✓	✓	✓
Wyee	-	✓	✓	✓	✓
Wakefield HVAS	✓	-	-	-	-
Teralba HVAS	✓	-	-	-	-

✓ - All data below applicable criteria

✗ - At least one elevated level above applicable criteria

- - Not applicable

HVAS - High Volume Air Sampler

* - Advisory reporting standard for PM_{2.5} concentrations (refer to Section 5.1)

1 INTRODUCTION

This report has been prepared by Todoroski Air Sciences on behalf of the NSW EPA. It provides a summary and analysis of the available ambient air quality and meteorological data collected in the Lake Macquarie - Wyong region during November 2014.

2 PROJECT SCOPE

The following outlines the scope of work for this project.

- ✦ Provide a monthly report written in plain English to the NSW EPA summarising and analysing available air quality data and meteorological information.
- ✦ The report will be published on the EPA's website and will assess the available data from monitoring stations operated by the NSW Office of Environment and Heritage (OEH) at Wyong and Wallsend, and by industry at Wyee, Marks Point, Dora Creek, Wakefield and Teralba.
- ✦ The aim is to provide a simplified report that is accessible and contains results that would be clearly understood by the general public.

The work is for the period from September 2013 to June 2015.

3 THE PURPOSE OF AMBIENT MONITORING

It is important to note that the data presented in this report are from both EPA and Industry monitoring sites. The EPA and the industry sites collect data for different purposes and this needs to be understood when comparing the data to the criteria.

EPA monitoring sites are specifically designed to measure the likely levels of pollutants that the general population in the area would experience (i.e. an underlying population exposure level), whereas industry monitoring sites are specifically designed to measure maximum levels in a particular location that may be affected by a particular industry.

Data from EPA sites can be compared with national air quality standards. Where the levels measured at EPA monitoring sites are above the national standards on a prolonged and consistent basis, this indicates that some investigation of the potential cause of the issue may be warranted to determine whether any action on a regional level would reduce or better manage the pollutant levels. In the case of PM₁₀, it is noted that the national standards permit five days annually above the criteria to allow for events such as bushfires and dust storms.

Data from industry monitoring sites can be compared with EPA impact assessment criteria. Where the levels measured at industry monitoring sites are above the impact assessment criteria on a prolonged and consistent basis, this indicates that further investigation is warranted to determine whether industry is responsible, and if so whether action to reduce or better manage the pollutant can be taken.

Whether there is any harmful effect on an individual due to an air pollutant will depend on many additional factors, and not just on the measured level of a pollutant. These factors include the total exposure to the pollutant, individual circumstances (age, health, body mass, levels of pollutants at work), levels of other pollutants in the area, and many other factors.

Where pollutant levels are below the criteria generally, harm would not be expected to occur, but it does not follow that harm automatically occurs when pollutant levels are above the criteria.

The criteria serve to highlight potential issues with the levels of pollutants that may warrant more detailed examination. The criteria may also serve to prioritise action in various areas, for example areas with the highest pollutant levels and highest populations or highest exposure would be expected to receive priority action.

3.1 More about air quality

More information about air quality can be found via the following links:

- + The Air Quality Index (AQI) was developed by the NSW EPA as an easily understood means of rating the pollutant level relative to its pollutant criteria.
 - o <http://www.environment.nsw.gov.au/AQMS/aboutaqi.htm>
- + Aqicn.org provides a near real-time AQI values for monitoring locations around the world. It should be noted that the AQI presented on this website is calculated differently to the NSW EPA AQI and is less stringent than those used in Australia, thus a direct comparison may not be valid.
 - o <http://aqicn.org/map/world/>
- + The NSW OEH website air quality page provides hourly updates of the AQI and data readings from the NSW EPA monitoring sites, and can provide daily forecasts for Sydney and alerts for elevated levels at Wallsend a Wyong, for example. The web tool also presents near real-time wind and pollutant data readings overlaid on regional maps for the Upper Hunter and Newcastle.
 - o <http://www.environment.nsw.gov.au/aqms/aqi.htm>
- + The Lower Hunter Particle Characterisation Study aims to determine the composition of particulate samples collected at monitoring sites at Beresfield, Newcastle, Stockton and Mayfield, and to identify the potential major sources of fine particulates in Newcastle and the Lower Hunter. Progress reports are published on the OEH website provided below.
 - o <http://www.environment.nsw.gov.au/aqms/lowhunterparticle.htm>
- + The Air Emissions in My Community web tool presents the estimated emission quantities of various substances and their sources by postcode (and larger) sized areas in an easy to use graphical interface. This is one of the best inventories of emissions that is available, but it is important to appreciate that it cannot include all sources of emissions. It is important to also understand that pollutant emissions are not the same as the pollutant levels that this report presents. Emissions in a given area are one of several important factors that affect pollutant levels in an area, for example the dispersion of the emissions in the atmosphere and how the emissions are released are critical in determining the air quality pollutant levels.
 - o <http://www.epa.nsw.gov.au/air/airemissionsapp/airemissionswebtool.aspx>
- + The NSW Health website provides information on how air pollution affects health and steps for reducing your air pollution and limiting your exposure.
 - o <http://www.health.nsw.gov.au/environment/air/Pages/default.aspx>

4 AIR QUALITY MONITORING SITES

Figure 4-1 and Table 4-1 summarise the locations and recorded parameters of the monitoring sites in the Lake Macquarie - Wyong region in November 2014.

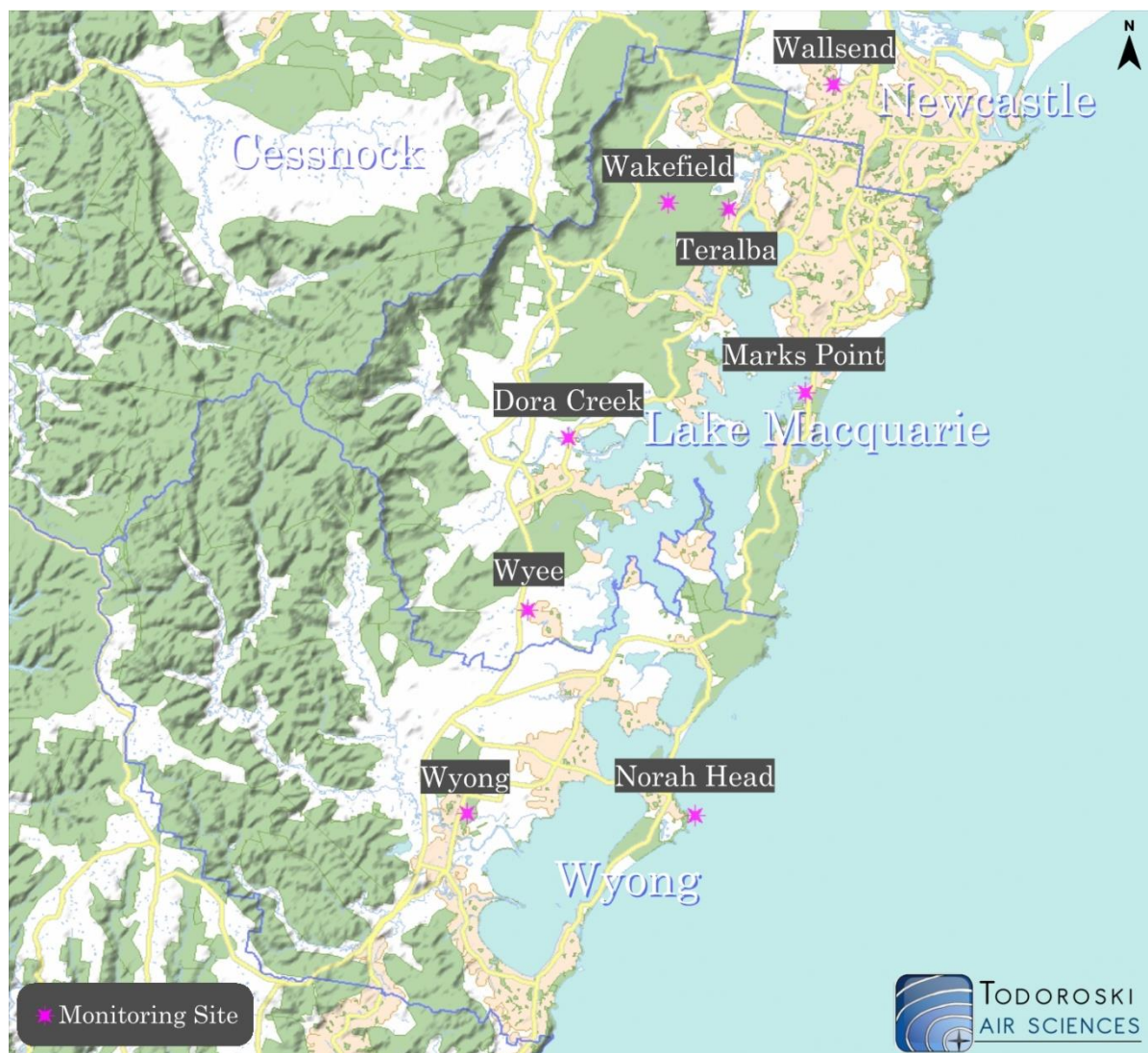


Figure 4-1: Monitoring site locations

Table 4-1: Monitoring sites

Monitoring Station	Type	Recorded Parameters	Recording Periods
Wallsend	NSW EPA site	PM ₁₀ (TEOM), PM _{2.5} , NO ₂ , SO ₂ , WS, WD	Hourly/Daily
Wyong	NSW EPA site	PM ₁₀ (TEOM), PM _{2.5} , NO ₂ , SO ₂ , WS, WD	Hourly/Daily
Marks Point	Industry site	NO ₂ , SO ₂ , WS, WD	Hourly
Wyee	Industry site	PM _{2.5} , NO ₂ , SO ₂ , WS, WD	Hourly
Dora Creek	Industry site	NO ₂ , SO ₂ , WS, WD	Hourly
Norah Head	BOM weather station	WS, WD	Hourly
Wakefield HVAS	Industry site	PM ₁₀ (HVAS)	Every 6th Day
Teralba HVAS	Industry site	PM ₁₀ (HVAS)	Every 6th Day

PM₁₀ - Particulate matter < 10µm

PM_{2.5} - Particulate matter < 2.5µm

TEOM - Tapered Element Oscillating Microbalance
(which samples air continuously)

NO₂ - Nitrogen dioxide

SO₂ - Sulfur dioxide

HVAS - High volume air sampler (which samples
for a 24-hour period every 6 days)

WS - Wind speed

WD - Wind direction

BOM - Bureau of
Meteorology

5 AIR QUALITY CRITERIA

The sections below identify the key pollutants currently being monitored at the Lake Macquarie - Wyong air quality monitoring sites and the applicable air quality criteria.

5.1 Particulate matter

Particulate matter consists of particles of varying size and composition. The total mass of all particles suspended in air is defined as the Total Suspended Particulate matter (TSP). The upper size range for TSP is nominally taken to be 30 micrometres (μm) as in practice particles larger than 30 to 50 μm will settle out of the atmosphere too quickly to be regarded as air pollutants.

The TSP is defined further into two sub-components. They are PM_{10} particles, particulate matter with aerodynamic diameters of 10 μm or less, and $\text{PM}_{2.5}$, particulate matter with aerodynamic diameters of 2.5 μm or less.

Table 5-1 summarises the air quality goals that are relevant to particulate pollutants as outlined in the NSW Environment Protection Agency (EPA) document "*Approved Methods for the Modelling and Assessment of Air Pollutants in NSW*" (**NSW DEC, 2005**).

Table 5-1: EPA air quality impact assessment criteria

Pollutant	Averaging Period	Criterion
Total suspended particulates (TSP)	Annual	90 $\mu\text{g}/\text{m}^3$
Particulate Matter < 10 μm (PM_{10})	Annual	30 $\mu\text{g}/\text{m}^3$
	24-hour	50 $\mu\text{g}/\text{m}^3$

Source: **NSW DEC, 2005**

5.1.1 $\text{PM}_{2.5}$ concentrations

The NSW EPA currently do not have impact assessment criteria for $\text{PM}_{2.5}$ concentrations, however the National Environment Protection Council (NEPC) has released a variation to the National Environment Protection Measure (NEPM) (**NEPC, 2003**) to include advisory reporting standards for $\text{PM}_{2.5}$ (see **Table 5-2**). As with the NEPM goals, the advisory reporting standards apply to the average, or general exposure of a population, rather than to "hot spot" locations such as industry monitoring sites.

Table 5-2: Advisory standard for $\text{PM}_{2.5}$ concentrations

Pollutant	Averaging Period	Concentration
Particulate Matter < 2.5 μm ($\text{PM}_{2.5}$)	24-hour	25 $\mu\text{g}/\text{m}^3$
	Annual	8 $\mu\text{g}/\text{m}^3$

Source: **NEPC, 2003**

5.2 Other air pollutants

Nitrogen dioxide (NO_2) is reddish-brown in colour (at high concentrations) with a characteristic odour and can irritate the lungs and lower resistance to respiratory infections such as influenza. NO_2 belongs to a family of reactive gases called nitrogen oxides (NO_x). These gases form when fuel is burned at high temperatures, and mainly originates from motor vehicles, power generators and industrial boilers (**USEPA, 2013**). NO_x may also be generated by blasting activities. It is important to note that when formed, NO_2 is generally a small fraction of the total NO_x generated.

Sulfur dioxide (SO_2) is a colourless, toxic gas with a pungent and irritating smell. It commonly arises in industrial emissions due to the sulfur content of the fuel. SO_2 can have impacts upon human health

and the habitability of the environment for flora and fauna. SO₂ emissions are a precursor to acid rain, which can be an issue in the northern hemisphere; however it is not known to be an issue in NSW.

Table 5-3 summarises the air quality goals for NO₂ and SO₂.

Table 5-3: Air quality impact assessment criteria for air pollutants

Pollutant	Averaging period	Criterion
NO ₂	1-hour	246µg/m ³
	Annual	62µg/m ³
SO ₂	10-minute	712µg/m ³
	1-hour	570µg/m ³
	24-hour	228µg/m ³
	Annual	60µg/m ³

Source: NSW DEC, 2005

5.3 Summary of applicable criteria for this assessment

The particulate and gaseous pollutants monitored in the Lake Macquarie – Wyong region have air quality criteria which are averaged over short and long time periods. Annually averaged criteria require a full year of data.

As this report only looks at one month of ambient air quality data, the annual average criteria are not applicable. The SO₂ 10-minute average criterion was not included as 10-minute monitoring data are not available. Therefore the criteria relevant to this assessment are those averaged over the shorter time periods (1-hour and 24-hours).

Table 5-4 summarises the applicable air quality criteria for this assessment.

Table 5-4: Air quality impact assessment criteria used in this assessment

Pollutant	Averaging Period	Type	Concentration
Particulate Matter < 10µm (PM ₁₀)	24-hour	Criterion	50µg/m ³
Particulate Matter < 2.5µm (PM _{2.5})	24-hour	Advisory Reporting Standard	25µg/m ³
Nitrogen Dioxide (NO ₂)	1-hour	Criterion	246µg/m ³
Sulfur Dioxide (SO ₂)	1-hour	Criterion	570µg/m ³
	24-hour	Criterion	228µg/m ³

6 METEOROLOGICAL MONITORING DATA

Representative wind speed and direction data have been obtained from the Lake Macquarie - Wyong air quality monitoring stations. The data are presented as a series windroses. For an example of how to read a windrose, refer to **Figure A-1** in **Appendix A**.

Figure 6-1 presents the November 2014 windroses for Wallsend, Dora Creek, Marks Point, Wyee, Norah Head and Wyong.

The figure shows that the meteorological stations recorded winds which varied depending on the local influence of environmental features such as terrain, vegetation and buildings. Overall the stations recorded variable winds which typically originated from the northeast and southeast quadrants.

The Norah Head weather station recorded wind speeds which were generally higher than those recorded at the other stations. This is expected as the Norah Head weather station is located in an unsheltered coastal location.

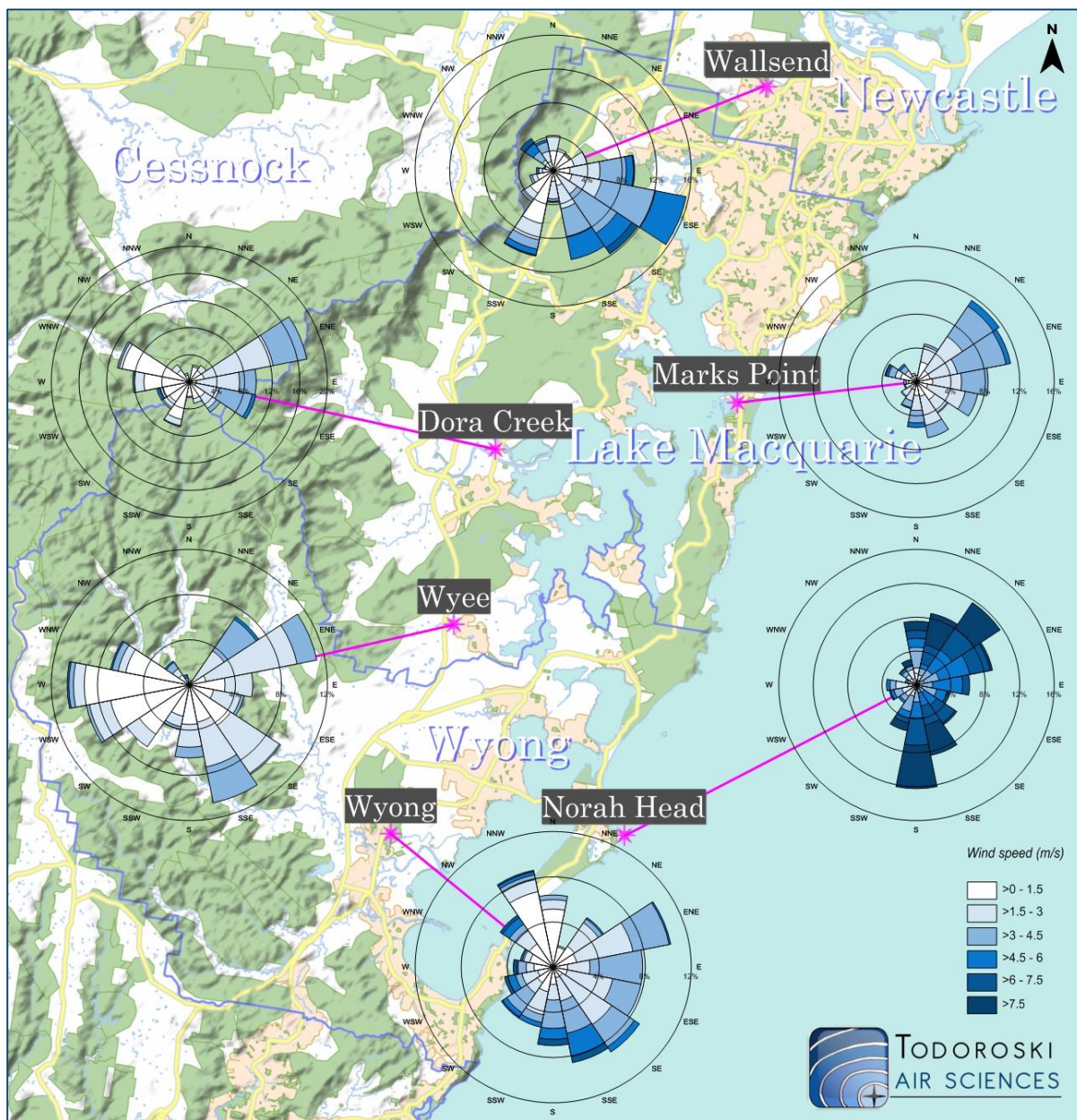


Figure 6-1: November windroses – Wallsend, Dora Creek, Marks Point, Wyee, Norah Head and Wyong

The meteorological stations recorded variable winds which typically originated from the northeast and southeast quadrants in November 2014.

7 AMBIENT AIR QUALITY MONITORING DATA

7.1 Preamble

The monitoring data in this report are presented in raw form as provided to Todoroski Air Sciences by the NSW EPA.

The 24-hour average data presented in this report have been averaged using the 1-hour average readings. Days which contain less than 75% data (less than 18 hours of 1-hour average data) have not been included in this report.

The PM_{2.5} monitoring data recorded at the Wyee monitoring station are currently undergoing a full quality assurance analysis. The Wyee PM_{2.5} data presented in this report may therefore be subject to revision.

All of the monitoring data provided to Todoroski Air Sciences are presented in this report. The data are shown in the results and appendices as relevant. Hourly data are presented in a graphical format in **Appendix B** and 24-hour average data are presented in tabulated format in **Appendix C**.

7.2 Analysis of Monitoring Data

Table 7-1 presents a summary of the maximum pollutant levels measured during November 2014. The results indicate that pollutant levels were below the applicable criteria for all monitors at all times.

Table 7-1: Maximum pollutant levels - November 2014

Site	PM ₁₀ (µg/m ³)	PM _{2.5} (µg/m ³)	SO ₂ (µg/m ³)	NO ₂ (µg/m ³)	SO ₂ (µg/m ³)
	24-hour average	24-hour average	24-hour average	1-hour average	1-hour average
	Air Quality Impact Criteria				
	50	25*	228	246	570
Wallsend	32.9	14.4	11.8	36.8	58.7
Wyong	29.4	14.4	9.0	39.7	46.4
Dora Creek	-	-	5.3	65.7	7.1
Marks Point	-	-	4.3	40.0	36.7
Wyee	-	13.5	14.1	49.5	78.6
Wakefield HVAS	25.3	-	-	-	-
Teralba HVAS	28.0	-	-	-	-

* Advisory reporting standard for PM_{2.5} concentrations (refer to Section 5.1)

- Not applicable

7.3 PM₁₀

Figure 7-1 presents all of the 24-hour average PM₁₀ monitoring results recorded in the Lake Macquarie - Wyong region in November 2014.

Relative to the Air Quality Index, as shown by the coloured bands in the figure, PM₁₀ levels were very good or good at all monitors at all times during November 2014. The Wallsend and Wyong monitors recorded good levels 89% and 83% of the time respectively, and the Wakefield and Teralba HVAS monitors both recorded four days with good levels. All other recorded data were very good.

All data recorded at the Lake Macquarie - Wyong monitoring sites were below the 24-hour average PM₁₀ criterion level of 50µg/m³ in November 2014.

Figure B-1 to Figure B-2 in Appendix B present the 1-hour average PM₁₀ data in graphical form for each individual site. There is no criterion that applies to 1-hour average PM₁₀ levels and these 1-hour results are not intended to be compared with the PM₁₀ criterion. It is a normal occurrence, and it is expected that in the normal environment 1-hour average PM₁₀ levels will fluctuate more significantly than 24-hour average PM₁₀ levels.

7.4 PM_{2.5}

Figure 7-2 presents all of the 24-hour average PM_{2.5} monitoring data recorded in the Lake Macquarie - Wyong region in November 2014.

Relative to the Air Quality Index, as shown by the coloured bands in the figure, the data indicate that PM_{2.5} levels were very good or good at all monitors at all times during November 2014. The Wallsend, Wyong and Wyee monitors recorded good levels 50%, 34% and 13% of the time respectively.

All data recorded at the Lake Macquarie - Wyong monitoring sites were below the 24-hour average PM_{2.5} advisory reporting standard of 25µg/m³ in November 2014.

Figure B-3 to Figure B-5 in Appendix B present the 1-hour average PM_{2.5} data in graphical form for each individual site. There is no criterion that applies to 1-hour average PM_{2.5} levels and these 1-hour results are not intended to be compared with the PM_{2.5} advisory reporting standard. It is a normal occurrence, and it is expected that in the normal environment 1-hour average PM_{2.5} levels will fluctuate more significantly than 24-hour average PM_{2.5} levels.

We note the Wyee monitoring site, and to a lesser extent the Wallsend and Wyong sites, on occasion recorded periods in which PM_{2.5} levels were less than zero. In some situations the concentration of the pollutant being measured may be very close to zero, in which case the measured value (after adjusting for drift of zero and span and any other corrections) may be less than the measurement limit of detection (**NEPC, 2001**), and in these circumstances the output may be negative.

The monitors may also record short term positive or negative values due to instrument faults, the presence of moisture within the instrument or volatile matter (which can register as a solid mass at first, but then evaporates, registering negative mass at a later time).

7.5 Nitrogen dioxide NO₂

Figure 7-3 presents the 1-hour average NO₂ monitoring data recorded in the Lake Macquarie - Wyong region in November 2014.

Relative to the Air Quality Index, as shown by the coloured bands in the figure, the data indicate the NO₂ levels were very good all of the time at all of the monitors.

All data were below the applicable criterion on all days.

7.6 Sulfur dioxide SO₂

Figure 7-4 presents the 1-hour average SO₂ monitoring data recorded in the Lake Macquarie - Wyong region in November 2014.

Relative to the Air Quality Index, as shown by the coloured bands in the figure, the data indicate the SO₂ levels were very good all of the time at all of the monitors.

All data were below the applicable criterion on all days.

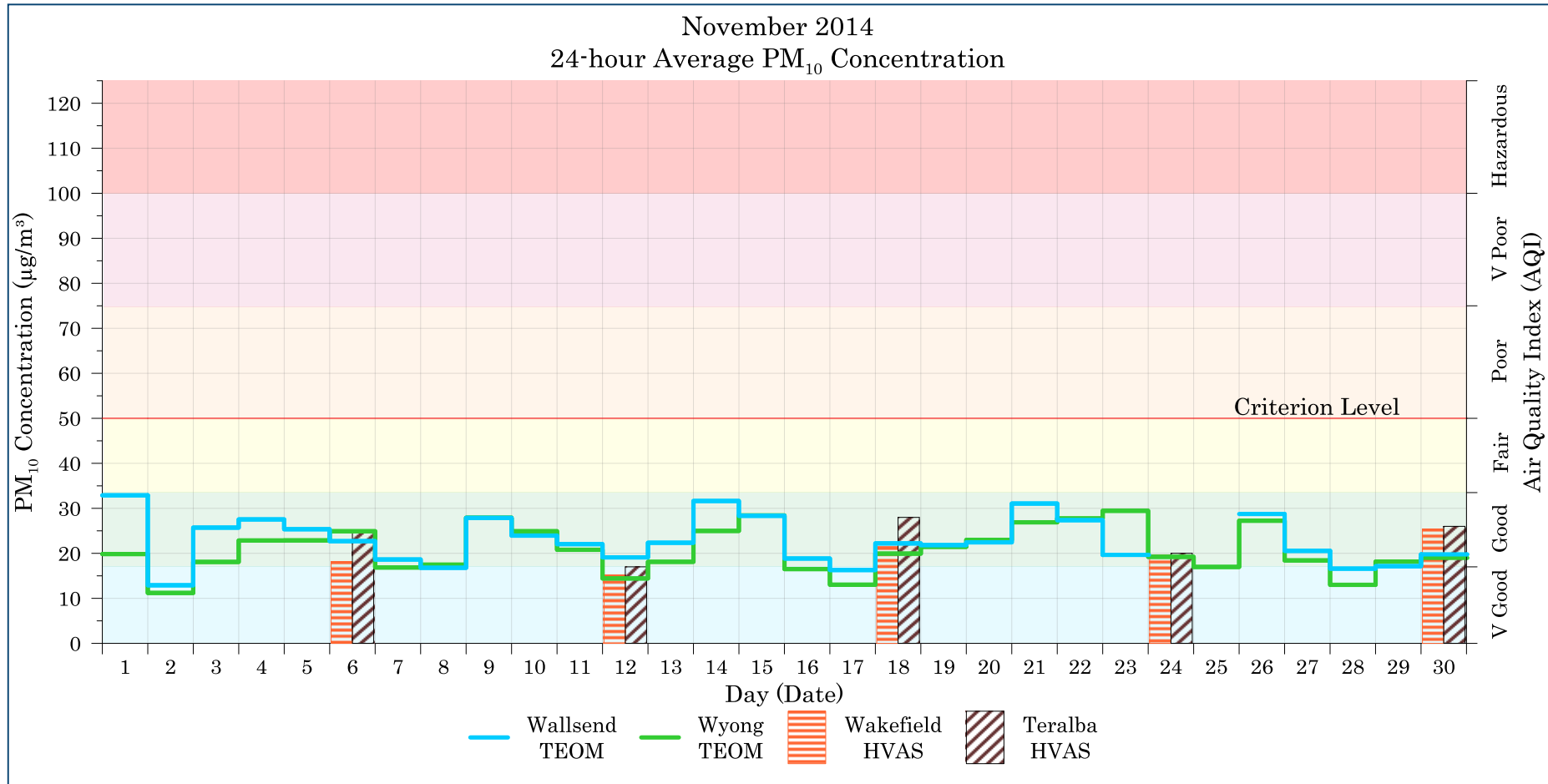


Figure 7-1: Lake Macquarie - Wyong 24-hour average PM₁₀ levels – November 2014

PM₁₀ levels were very good or good at all monitors at all times during November 2014. The Wallsend and Wyong monitors recorded good levels 89% and 83% of the time respectively, and the Wakefield and Teralba HVAS monitors both recorded four days with good levels. All other recorded data were very good. All data recorded at the Lake Macquarie - Wyong monitoring sites were below the 24-hour average criterion of 50µg/m³.

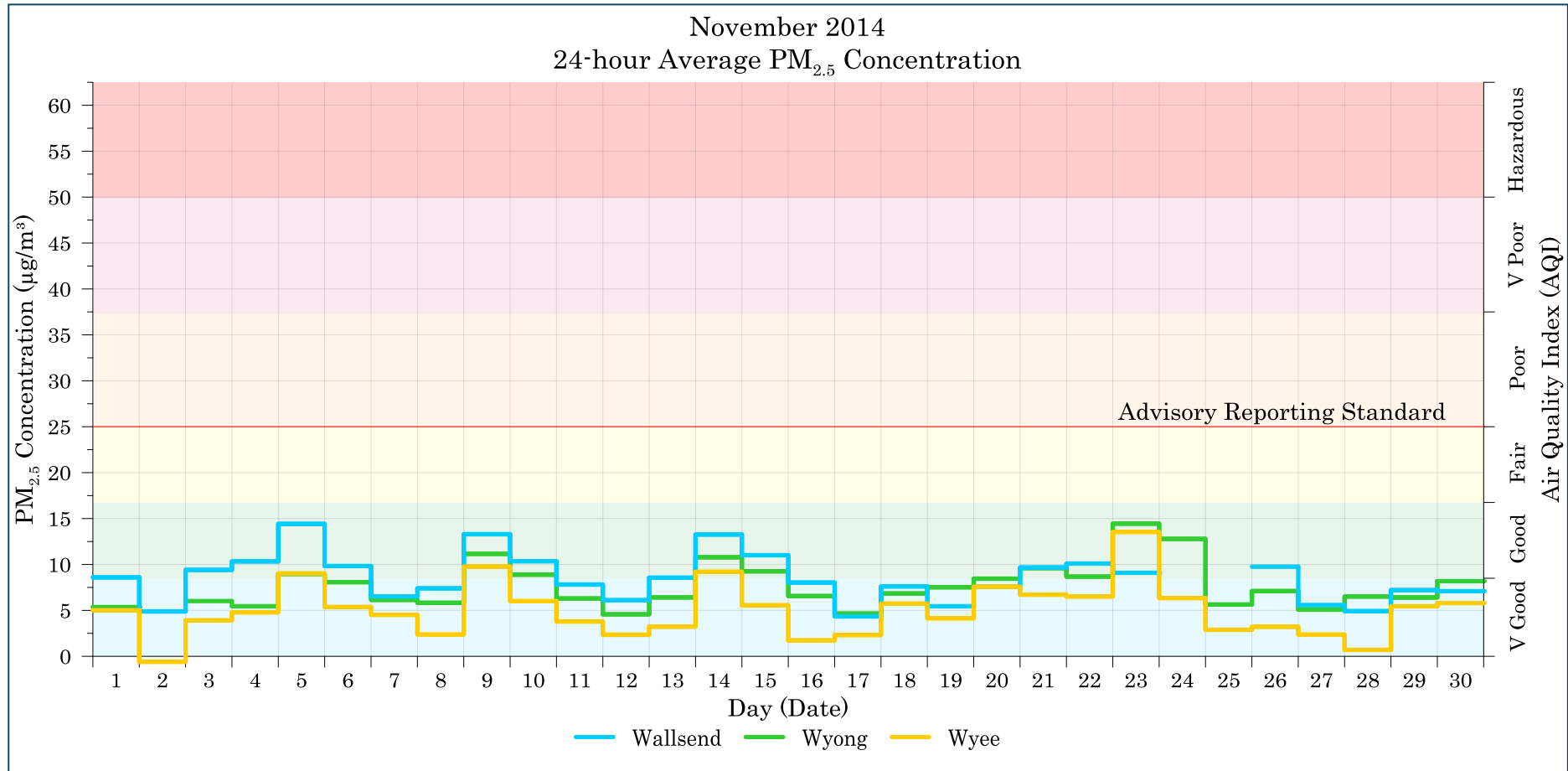


Figure 7-2: Lake Macquarie - Wyong 24-hour average PM_{2.5} levels – November 2014

PM_{2.5} levels were very good or good at all monitors at all times during November 2014. The Wallsend, Wyong and Wye monitors recorded good levels 50%, 34% and 13% of the time respectively. The Wye PM_{2.5} monitor recorded one day with a negative 24-hour average PM_{2.5} result. This can occur due to a number of reasons and this is explained in further detail in **Section 7.4**. All data recorded at the Lake Macquarie - Wyong monitoring sites were below the 24-hour average PM_{2.5} advisory reporting standard of 25µg/m³.

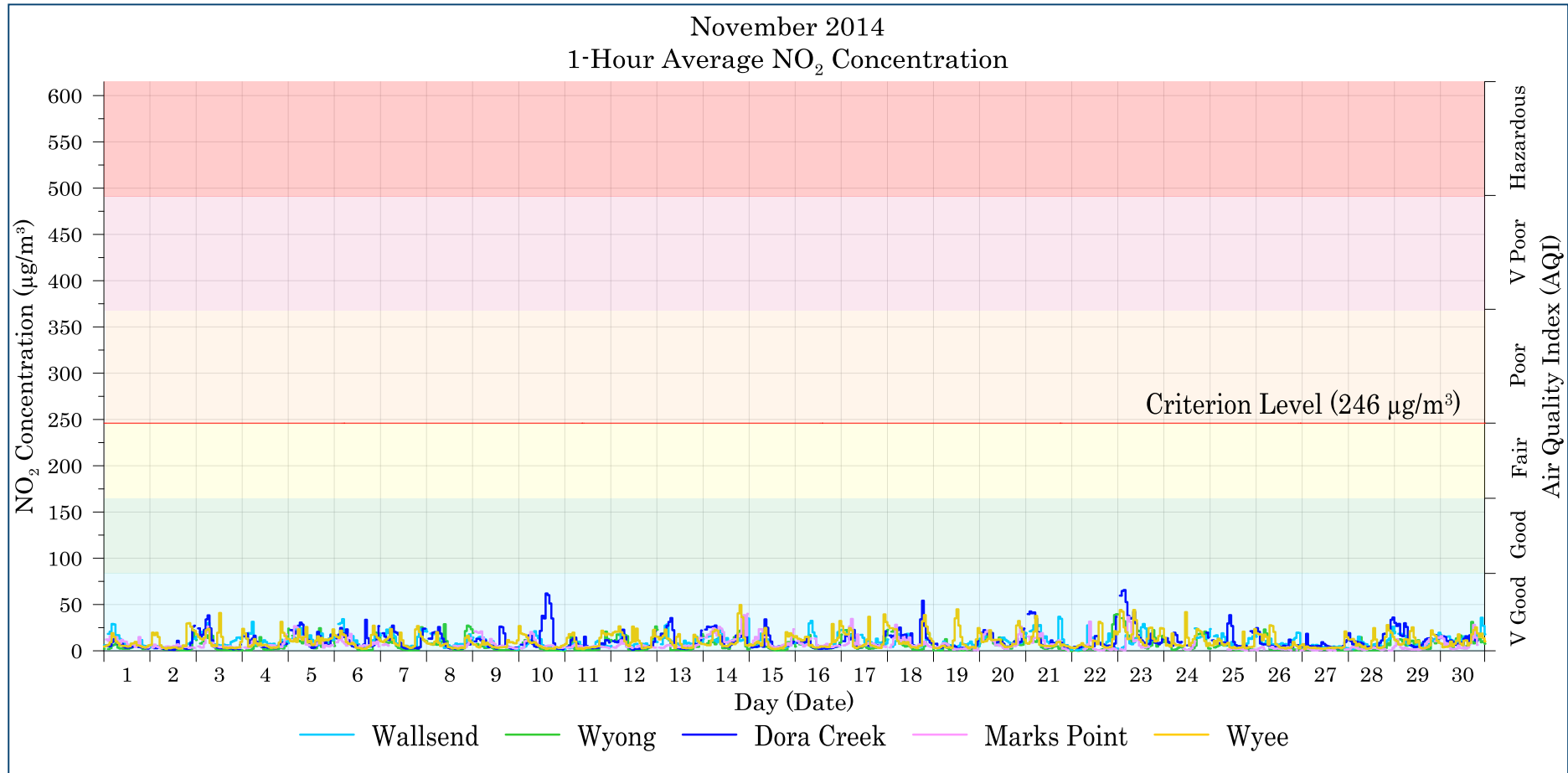


Figure 7-3: Lake Macquarie - Wyong 1-hour average NO₂ levels – November 2014

All data recorded at the Lake Macquarie - Wyong monitoring sites were below the 1-hour average NO₂ criterion level of 246µg/m³ in November 2014. Measured levels of NO₂ were very good at all monitors at all times.

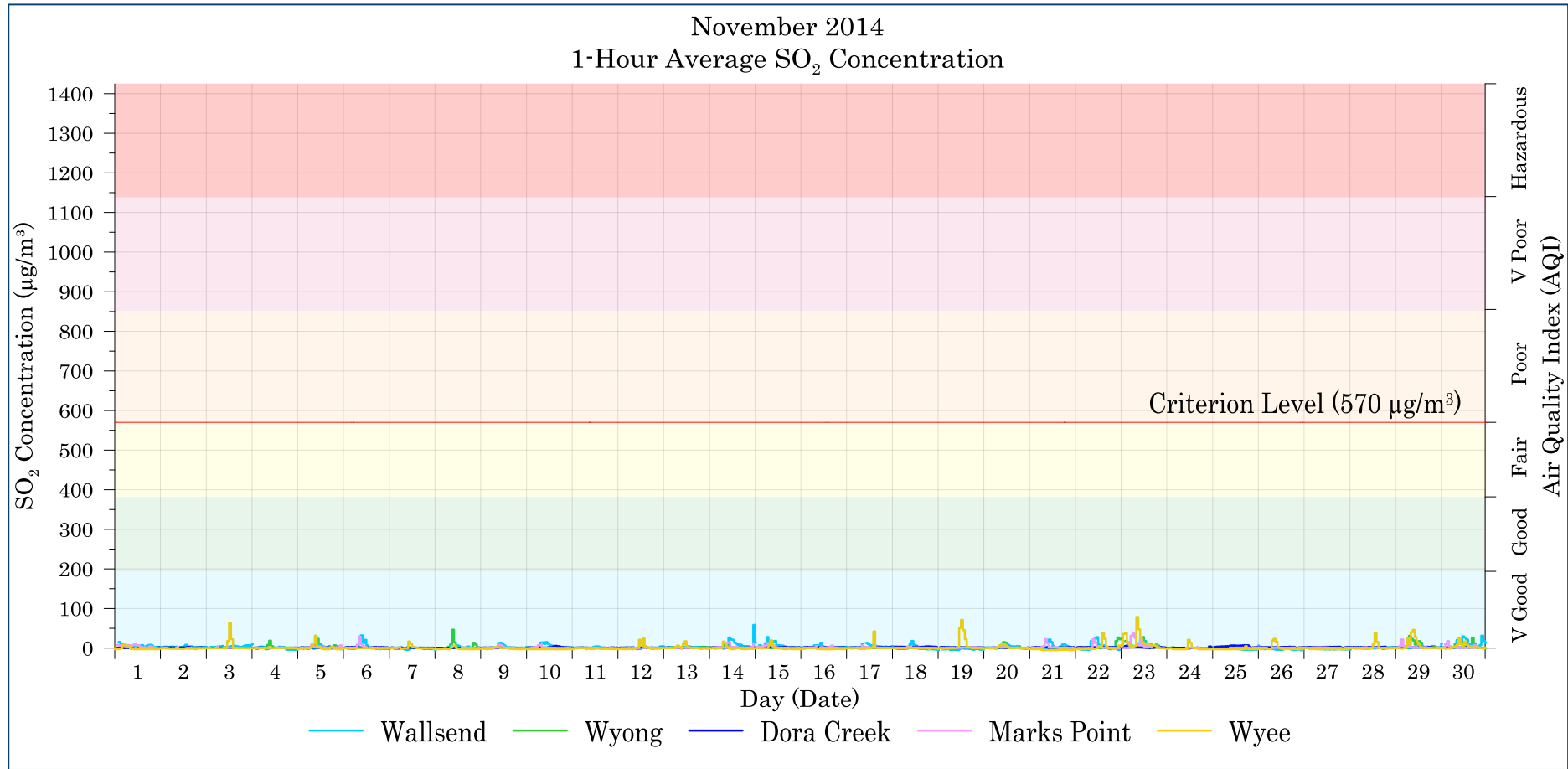


Figure 7-4: Lake Macquarie - Wyong 1-hour average SO₂ levels – November 2014

All data recorded at the Lake Macquarie - Wyong monitoring sites were below the 1-hour average SO₂ criterion level of 570µg/m³ in November 2014. Measured levels of SO₂ were very good at all monitors at all times.

8 ANALYSIS OF ELEVATED POLLUTANT LEVELS

There were no levels above the assessment criteria in November 2014.

9 CONCLUSIONS

The results indicate that the monitoring stations recorded very good air quality for the majority of November 2014.

Relative to the Air Quality Index:

- ✦ The measured levels of NO₂ were very good at all monitors at all times;
- ✦ The measured levels of SO₂ were very good at all monitors at all times;
- ✦ The measured levels of PM_{2.5} were very good to good at all times for all locations; and,
- ✦ The measured levels of PM₁₀ were very good to good at all times for all locations.

On this basis it can be concluded that the air quality in the Lake Macquarie - Wyong region was generally very good in November 2014.



10 REFERENCES

NEPC (2001)

"National Environment Protection (Ambient Air Quality) Measure Technical Paper No. 5 Data Collection and Handling", National Environment Protection Council, May 2001.

NEPC (2003)

"Variation to the National Environment Protection (Ambient Air Quality) Measure for Particles as PM_{2.5}", National Environment Protection Council, May 2003.

NSW DEC (2005)

"Approved Methods for the Modelling and Assessment of Air Pollutants in NSW", Department of Environment and Conservation (NSW), August 2005.

USEPA (2013)

Health Effects of Pollution, United States Environmental Protection Agency website, <<http://www.epa.gov/region07/air/quality/health.htm>>, accessed May 2013.



Appendix A

How to read a windrose



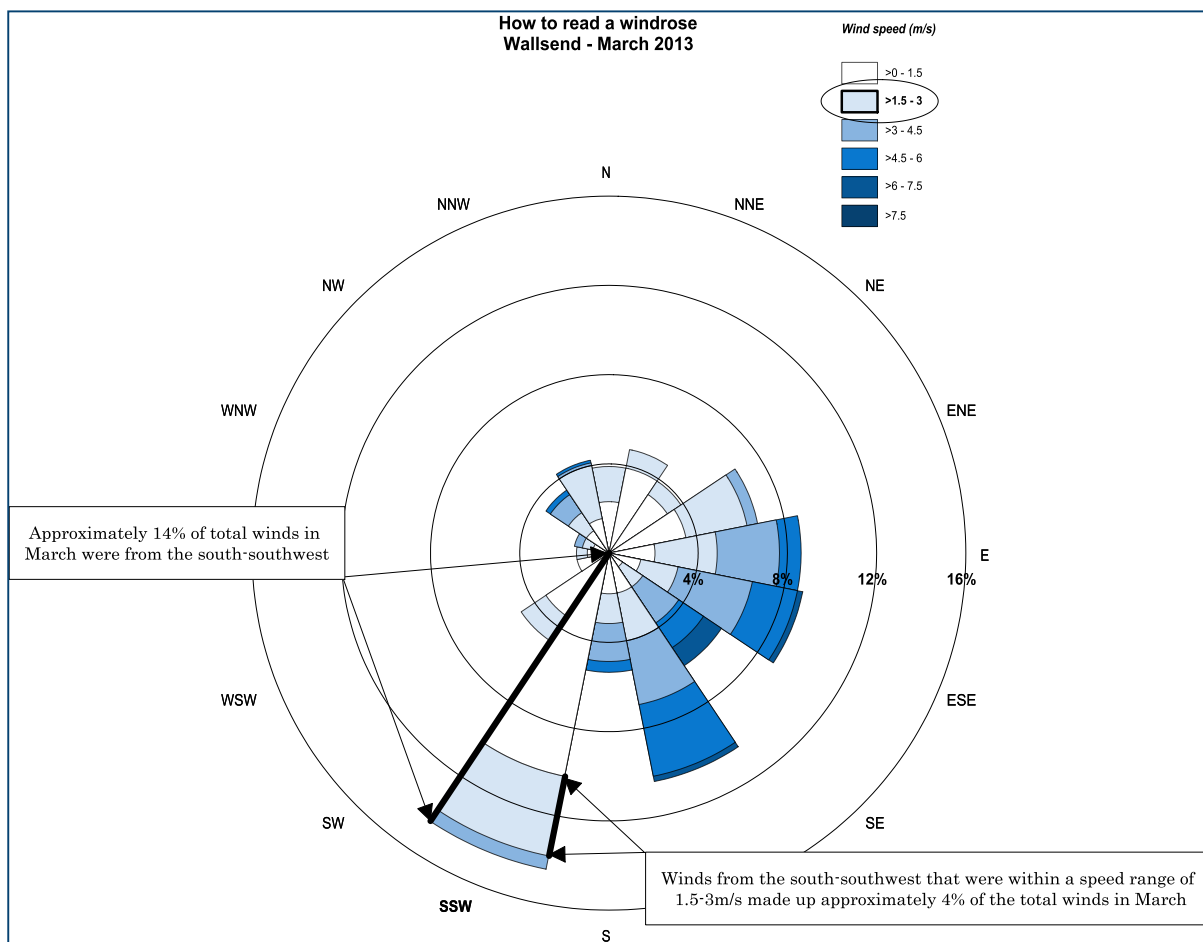


Figure A-1: How to read a windrose

Appendix B
Monitoring Data (Graphical)



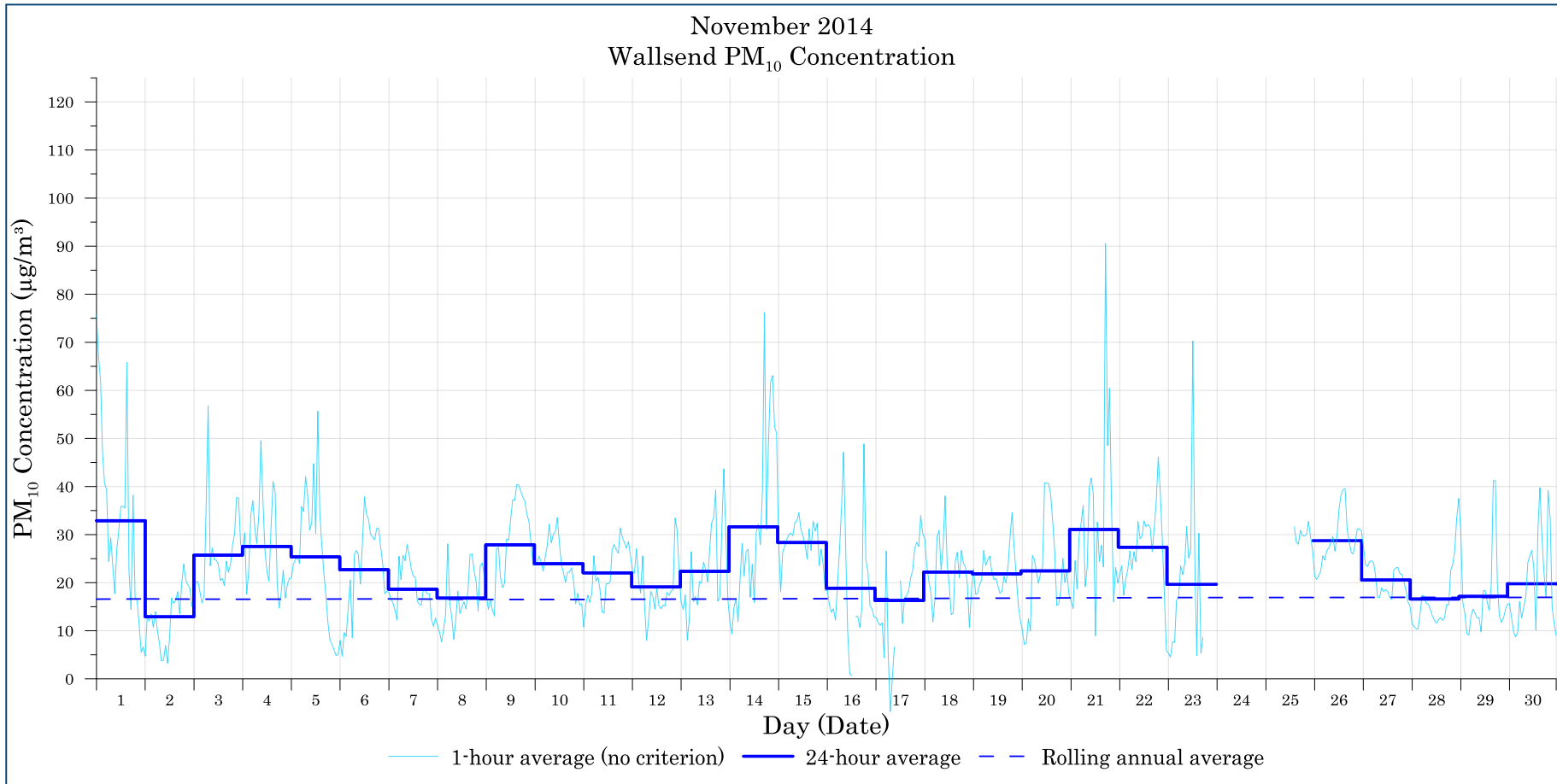


Figure B-1: Wallsend PM₁₀ concentration - November

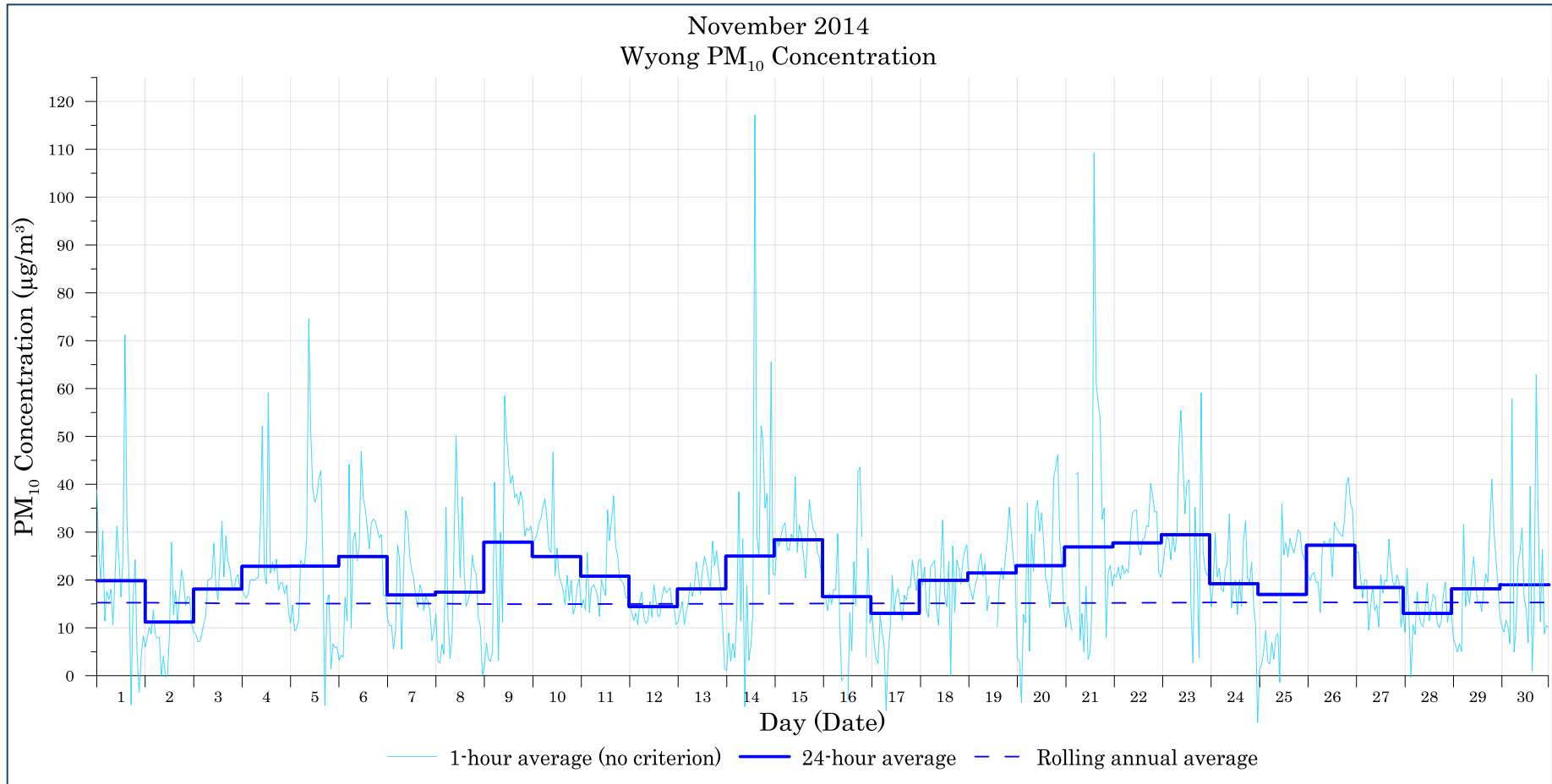


Figure B-2: Wyong PM₁₀ concentration - November

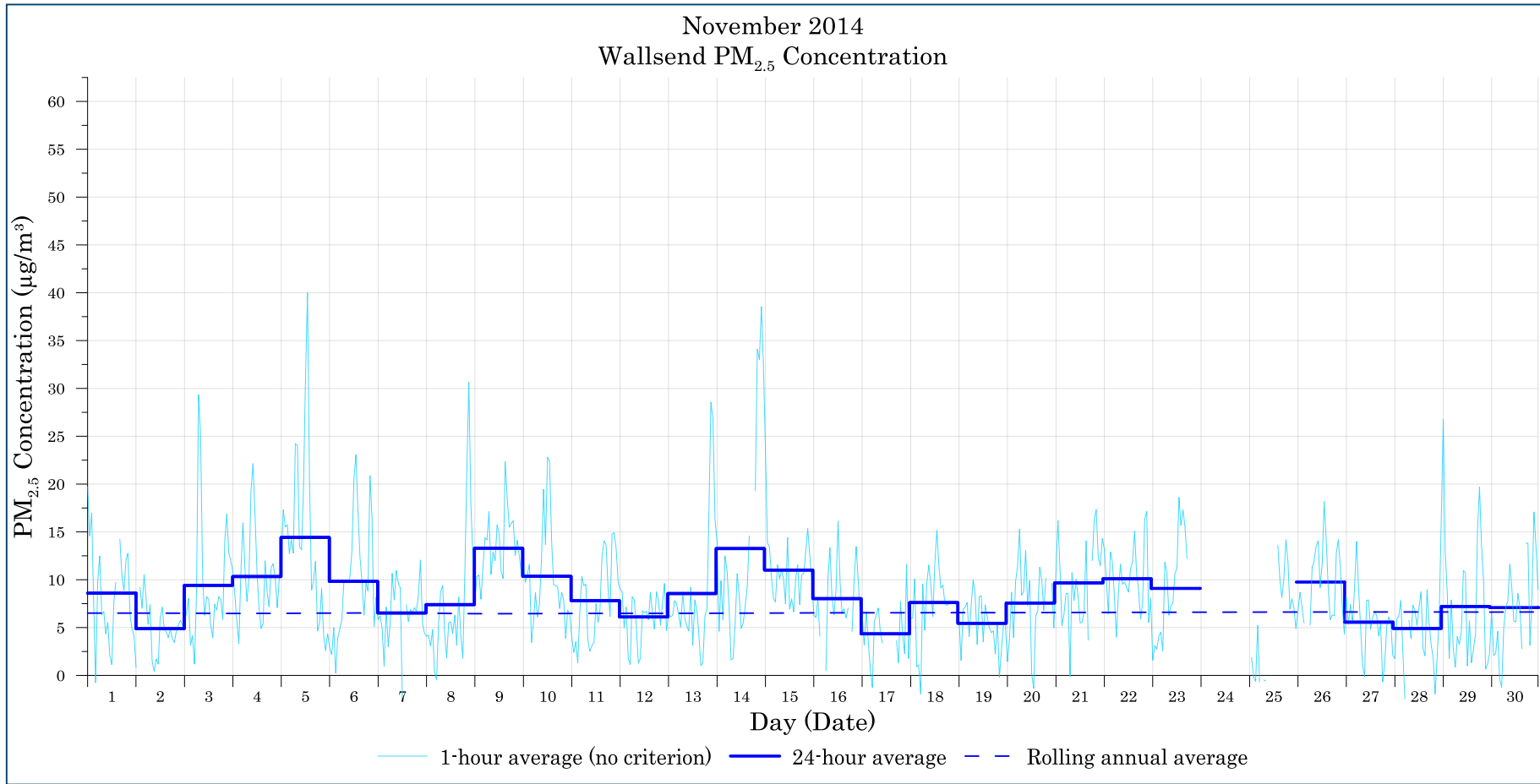


Figure B-3: Wallsend PM_{2.5} concentration - November

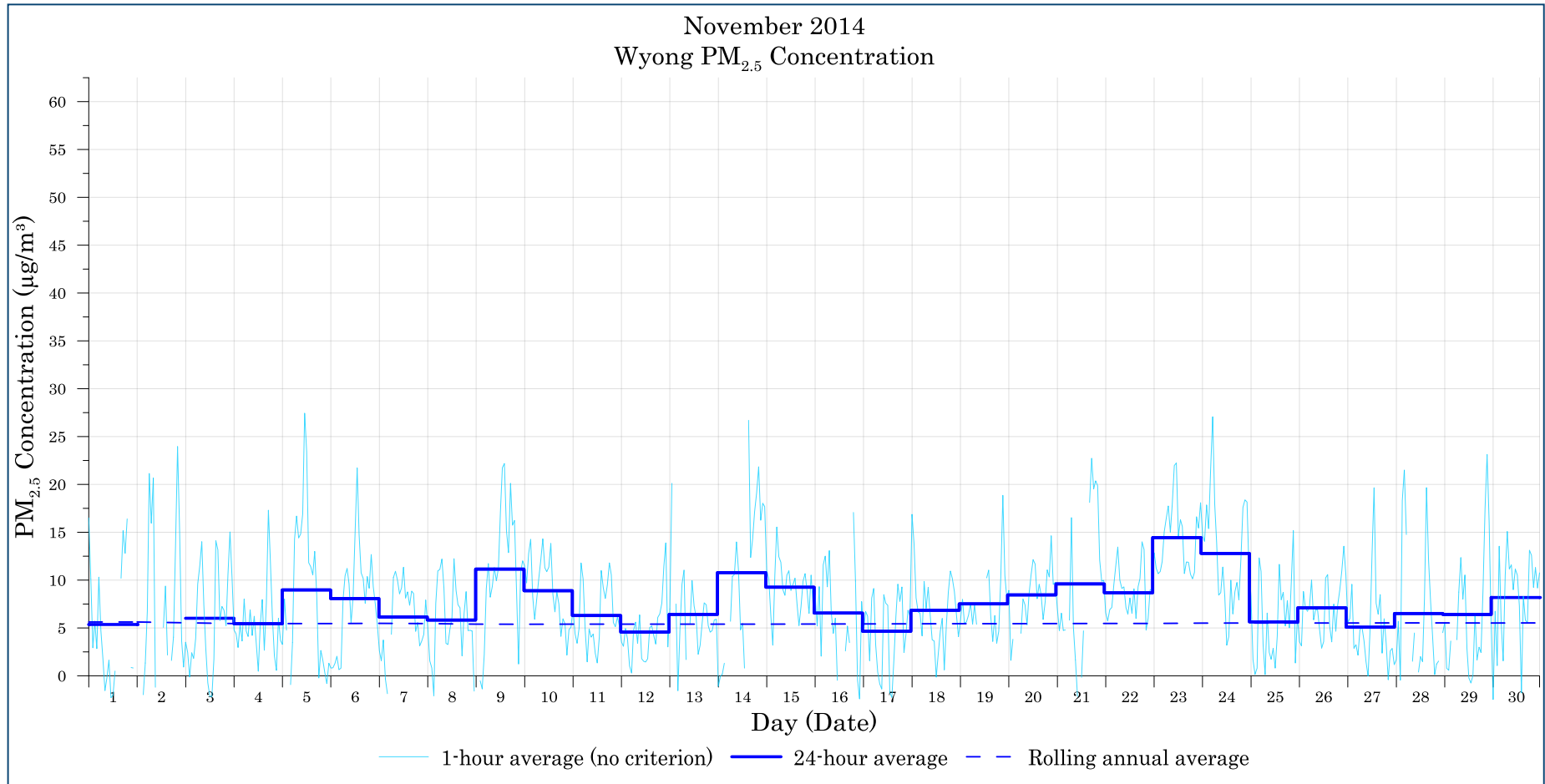


Figure B-4: Wyong PM_{2.5} concentration - November

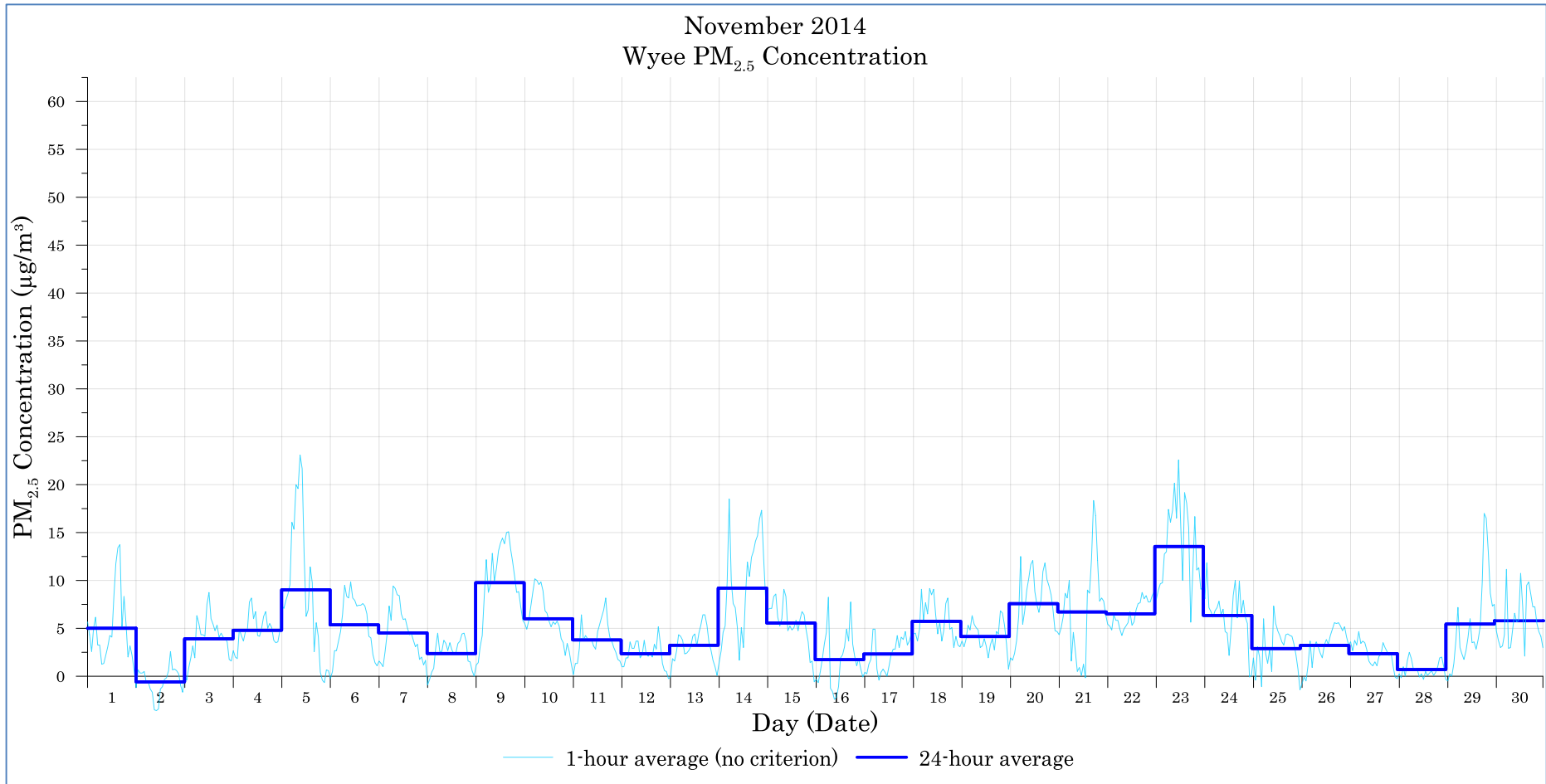


Figure B-5: Wyee PM_{2.5} concentration - November



Appendix C
Monitoring Data (Tabulated)



Table C-1: November 24-hour average monitoring data

Date	PM ₁₀ (µg/m ³)		PM _{2.5} (µg/m ³)			SO ₂ (µg/m ³)				
	Wallsend	Wyong	Wallsend	Wyong	Wyee	Wallsend	Wyong	Dora Creek	Marks Point	Wyee
1/11/2014	32.9	19.9	8.6	5.4	5.0	5.1	0.4	0.5	4.3	-1.0
2/11/2014	12.9	11.2	4.9	-	-0.6	3.3	-0.3	1.6	-	-0.9
3/11/2014	25.7	18.1	9.4	6.0	3.9	3.9	0.7	0.7	0.7	4.3
4/11/2014	27.5	22.9	10.3	5.4	4.8	-0.2	2.1	1.0	0.8	0.1
5/11/2014	25.4	22.9	14.4	9.0	9.0	0.3	4.0	1.5	2.1	1.5
6/11/2014	22.7	24.9	9.8	8.1	5.4	3.6	0.6	2.0	3.1	-0.3
7/11/2014	18.6	16.9	6.5	6.1	4.5	-1.3	0.2	1.0	-	1.4
8/11/2014	16.8	17.5	7.4	5.8	2.4	0.9	5.0	0.5	-	-1.3
9/11/2014	27.9	27.9	13.3	11.2	9.8	2.0	0.8	1.0	1.6	-1.0
10/11/2014	23.9	24.9	10.4	8.9	6.0	3.1	0.3	2.3	1.6	-2.6
11/11/2014	22.0	20.8	7.8	6.3	3.8	1.1	0.0	1.2	0.5	-1.4
12/11/2014	19.1	14.4	6.1	4.6	2.3	0.0	0.3	1.4	0.6	1.4
13/11/2014	22.3	18.1	8.6	6.4	3.2	1.2	2.1	1.0	0.6	1.9
14/11/2014	31.6	25.0	13.3	10.8	9.2	8.6	3.2	1.4	3.0	0.3
15/11/2014	28.3	28.4	11.0	9.3	5.6	7.2	0.3	2.3	3.0	0.4
16/11/2014	18.8	16.5	8.0	6.6	1.7	3.0	0.1	2.1	1.7	-1.8
17/11/2014	16.3	13.0	4.3	4.7	2.3	4.7	0.0	1.9	1.3	1.5
18/11/2014	22.2	19.9	7.6	6.8	5.7	0.6	-0.6	3.4	1.1	-0.1
19/11/2014	21.8	21.4	5.4	7.5	4.1	-2.6	-0.7	2.0	1.1	8.1
20/11/2014	22.4	23.0	7.6	8.4	7.6	2.5	2.8	0.8	1.7	1.4
21/11/2014	31.1	26.9	9.7	9.6	6.7	3.2	0.2	1.8	2.9	-4.2
22/11/2014	27.4	27.7	10.1	8.7	6.5	3.2	2.8	2.4	2.2	2.3
23/11/2014	19.7	29.4	9.1	14.4	13.5	-	9.0	2.4	-	14.1
24/11/2014	-	19.2	-	12.8	6.3	-	0.1	-	-	-0.3
25/11/2014	-	17.0	-	5.6	2.9	-1.2	-0.1	5.3	-	-2.2
26/11/2014	28.7	27.3	9.8	7.1	3.2	-2.4	0.5	2.5	1.2	0.9
27/11/2014	20.5	18.4	5.6	5.1	2.4	-2.3	0.4	2.6	1.2	-2.2
28/11/2014	16.6	13.0	4.9	6.5	0.7	-0.2	0.1	2.4	1.1	2.2
29/11/2014	17.1	18.2	7.2	6.4	5.4	2.0	6.4	1.8	2.9	7.2
30/11/2014	19.8	19.0	7.1	8.2	5.8	11.8	6.1	1.7	3.2	4.1

- Not applicable

Table C-2: November 24-hour average HVAS monitoring data

Date	PM ₁₀ (HVAS) (µg/m ³)	
	Wakefield (Westside)	Teralba
6/11/2014	18.1	25.0
12/11/2014	15.1	17.0
18/11/2014	21.5	28.0
24/11/2014	19.6	20.0
30/11/2014	25.3	26.0

- Not applicable