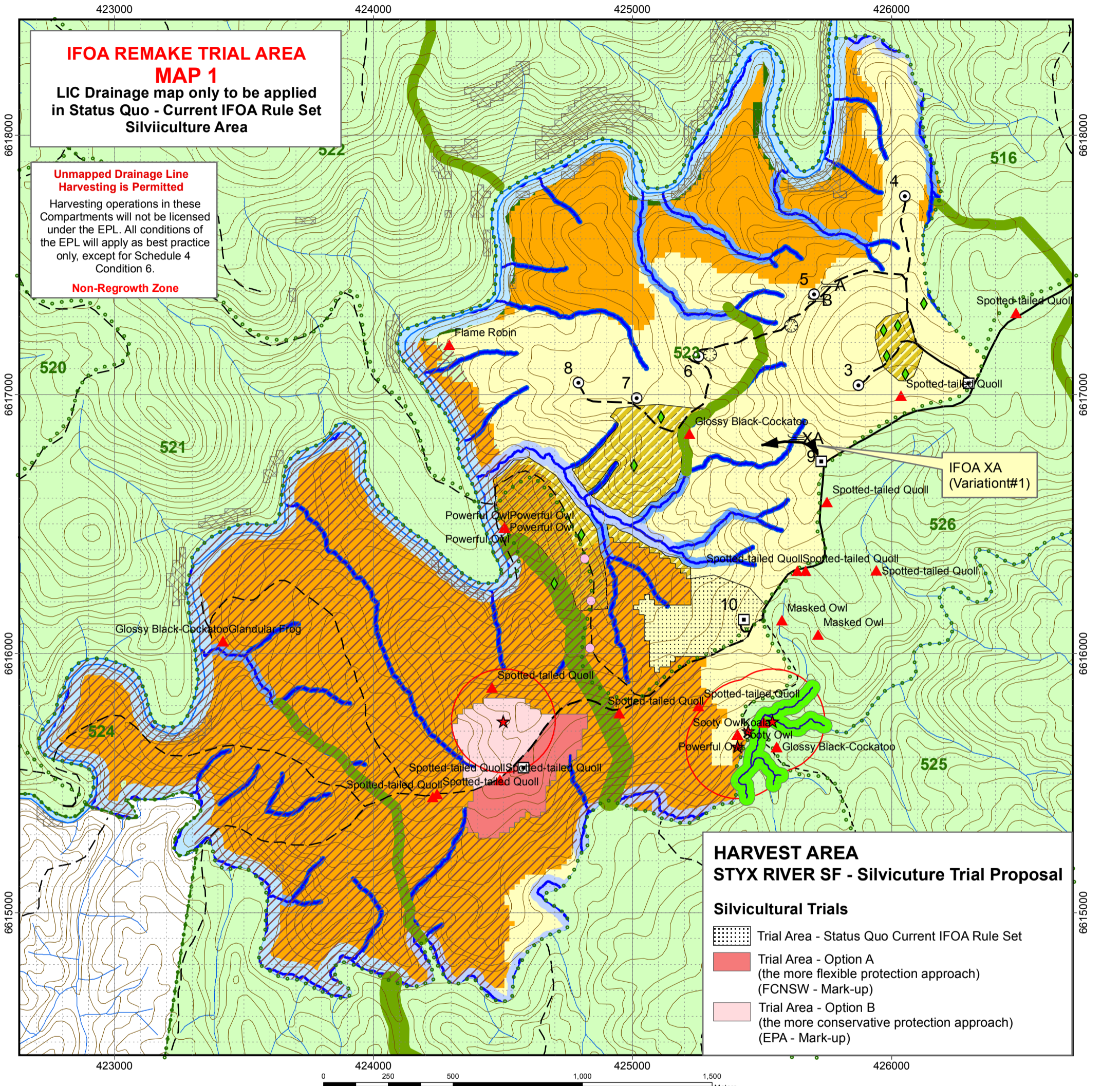




Scale: 1:15,000
 Datum: GDA94 / Projection: MGA
 Map Sheets:
 1:25,000: Jeogla 9336-4-N
 1:100,000: Carrai 9336
 Contour Interval: 10 m

Harvest Plan Operational Map Compartments 523 and 524 Styx River State Forest Styx River Management Area

APPROVED
 Original Harvest Plan - RM Approval Date: 13/00/12
 IFOA Trial Map 1 Version - Approval Date: 31/07/2015
 Created By: Bob Aspden
 Original by: Ken Drew



**IFOA REMAKE TRIAL AREA
 MAP 1**
 LIC Drainage map only to be applied
 in Status Quo - Current IFOA Rule Set
 Silviculture Area

**Unmapped Drainage Line
 Harvesting is Permitted**
 Harvesting operations in these
 Compartments will not be licensed
 under the EPL. All conditions of
 the EPL will apply as best practice
 only, except for Schedule 4
 Condition 6.
Non-Regrowth Zone

HARVEST AREA STYX RIVER SF - Silviculture Trial Proposal

- Silvicultural Trials**
- Trial Area - Status Quo Current IFOA Rule Set
 - Trial Area - Option A (the more flexible protection approach) (FCNSW - Mark-up)
 - Trial Area - Option B (the more conservative protection approach) (EPA - Mark-up)

- MAP FEATURES**
- State Forest Boundary
 - Compartments Boundary
 - 10 / 100 m Contour
 - State Forest
 - Private Property (cadastre)
 - National Park
- DRAINAGE FEATURES**
- Drainage line (5m Operational Zone)
 - 1st Order (Protection 10m)
 - 2nd Order (Protection 20m)
 - 3rd Order (Protection 30m)
 - 4th order & above (Protection 50m)

- ROADS, DUMPS & CROSSINGS**
- Gravel Road
 - Natural Surface Road
 - Not to be used for haulage
 - Roads outside harvest area
 - Temporary Dry
 - Temporary Wet
 - Gully Stuffers
 - Possible Gravel Quarry Sites
- MODIFIED HARVEST AREA**
- Found within other exclusions

- HARVEST AREA & EXCLUSION ZONES**
- Base Net Area - (IHL 1&2)**
Harvest Area
- General Management (FMZ 4 and 8)
- EXCLUSIONS**
- 3 Bar Exclusions (Limited Falling)**
- Ridge & Headwater Habitat (40m/80m wide exclusion)
 - Special Management (FMZ 2)
 - High Conservation Value Old Growth
 - Owl Landscape Protection
 - HRM Exclusion

- Threatened Species Records**
Records requiring prescription
- Stuttering Frog with 30m Buffer
 - Stuttering Frog 200m Radius of Record
No UMDL within 200m of record
Revert to 10m UMDL EPL protection
 - Hasting River Mouse
 - Ecology point site (labelled on map)