

# Infrastructure Advice for NSW EPA Waste and Recycling Infrastructure Grant Recipients

NSW EPA has established a panel of expert contractors to provide free waste infrastructure advice for grant recipients in the following infrastructure programs:

- Major Resource Recovery Infrastructure
- Resource Recovery Facilities Expansion and Enhancement
- Organics Infrastructure (Large and Small, Streams 1, 2 & 3)
- Landfill Consolidation.

The number of hours of infrastructure advice available for each project will be based on the amount of funding awarded.

Hours of infrastructure advice available per project	
Grant Awarded	Contractor Hours
\$25,000 - \$99,999	8
\$100,000 - \$499,999	10
\$500,000 - \$999,999	13
\$1,000,000 - \$2,999,999	18
\$3,000,000 - \$4,999,999	22
\$5,000,000 - \$10,000,000	26

Advisory services are available from the time a grant is approved to submission of the final project report.

## How can infrastructure advice help me?

Advisory services are available to assist council and private grant recipients with advice, guidance, coaching and critical feedback on procurement processes and documents. Advice may also assist in overcoming project challenges or issues.

Types of infrastructure advice could include:

- **procurement/economic/financial:** peer review of infrastructure planning approaches, or critical review of project timelines and risk plans
- **planning/licensing:** guidance on environmental protection licensing or development application procedures, or assistance in overcoming unforeseen planning and licensing issues
- **technical/engineering:** review of the design of infrastructure and civil works, or advice on equipment purchasing
- **compliance:** ensure compliance with legislative and policy requirements.
- **general/other:** to overcome particularly challenging problems that require additional assistance or which do not fall within the categories listed above.

**Infrastructure advice does not include implementing the project or preparing reports on the behalf of grant recipients.**

## How to request advice

Advice request must be specific, and must not be for work already undertaken.

NSW EPA will review advice requests and inform you of eligibility and success.

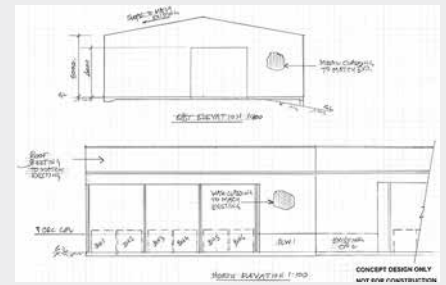
1. **Download the form on the NSW EPA website:** <http://www.epa.nsw.gov.au/wastegrants/infrastructure-advice.htm>
2. **Send the completed form to:** [infrastructure.advice@epa.nsw.gov.au](mailto:infrastructure.advice@epa.nsw.gov.au)

## Tenterfield Shire Council

Tenterfield Shire Council requested technical drawings to support the concept design of extended shed, earthworks, slab, drainage, traffic flow and back-of-house logistics for the Tenterfield Community Recycling Centre. A high-level preliminary design had been approved by the EPA; the Council's Manager of Water & Waste wanted more detailed drawings to verify and optimise layout, traffic flow and drainage plans, and help inform and price the procurement process.

A workshop was held with Arcadis' waste advisory and engineering leads to narrow down the optimal use of the 20 hours of approved advisory time. Arcadis also contacted the EPA's Community Recycling Centre team to discuss the EPA design requirements, such as ensuring low level hazardous wastes were dropped off first and near the entry point.

The draft and final drawings cemented the site plan and layout and included information on requirements such as slab thickness, wall cladding and roof plan. It recommended, for example, reconfiguring the truck access/exit route to reduce counterflow. Arcadis also advised on the revision of Council's preliminary budget estimate given the amount of earthwork required.



Tenterfield Community Recycling Centre (North Elevation) drawings

For more information contact:

NSW Environment Protection Authority  
[infrastructure.advice@epa.nsw.gov.au](mailto:infrastructure.advice@epa.nsw.gov.au)

Arcadis

Richard Collins

Principal Consultant – Waste Advisory

T: 02 8907 9180

E: [richard.collins@arcadis.com](mailto:richard.collins@arcadis.com)

W: [www.arcadis.com](http://www.arcadis.com)

## Moree Plains Shire

GHD provided advice on closure of the Weemelah Landfill and Boggabilla Landfill and prepared concept layouts for transfer stations which will be developed at the sites.

GHD reviewed background information such as maps, photographs, surveys, EPA reports, and also consulted with the council to determine the course of action. Concept sketches were developed for proposed transfer stations, which would be enough to apply for landfill closure grants, together with other supporting information.

GHD has also assisted a number of other councils, including Gundagai Shire Council, Uralla Shire, Walcha Council, Warren Shire Council and Mid-Western Regional Council.

Projects included advice for proposed Community Recycling Centres, recommendations for future weighbridges and advice on expansions and enhancements of waste depots.



Weemelah Landfill entrance left side view

For more information contact:

NSW Environment Protection Authority  
[infrastructure.advice@epa.nsw.gov.au](mailto:infrastructure.advice@epa.nsw.gov.au)

GHD

Andrew Quinn

Principal Environmental Consultant

T: 02 9239 7180

E: [Andrew.Quinn@ghd.com](mailto:Andrew.Quinn@ghd.com)

W: [www.ghd.com](http://www.ghd.com)

## Wentworth Shire Council

MRA Consulting Group was selected by Wentworth Shire Council to assist with the update of its Landfill Environmental Management Plan (LEMP) for the Buronga Landfill.

The Buronga Landfill, located 5km north of the NSW/Victoria border and Mildura is trusted under the *Public Trusts Act 1897* to Council. Council currently manages and operates the site. The LEMP was required to be updated as part of the recent variation to the Environment Protection Licence for the site and expected changes to environmental guidelines (draft second edition Environmental Guidelines: Solid Waste Landfills dated March 2015) under which the landfill operates.

MRA provided advice to Council to ensure that the changes to the LEMP met all regulatory requirements and that the landfill is operated in a manner that is safe, efficient and protects the environment and local community from pollution and off-site harmful effects.



Buronga Landfill Aerial Photo

For more information contact:

NSW Environment Protection Authority  
[infrastructure.advice@epa.nsw.gov.au](mailto:infrastructure.advice@epa.nsw.gov.au)

MRA Consulting Group

Roslyn Florie-George

Business Manager

T: 0447 803 955

E: [roslyn@mraconsulting.com.au](mailto:roslyn@mraconsulting.com.au)

W: [www.mraconsulting.com](http://www.mraconsulting.com)