

Development: Three Story Walk Up

Municipality: Homebush

This large scale multi-unit dwelling (MUD) consists of a series of 3-storey walk-up (low-rise) unit blocks, with 72 one and two bedroom apartments. The development is an example of the use of one large communal waste storage area to serve all dwellings in the complex, as well as the subsequent waste maintenance system.

Waste storage capacity

Approximately 60 x 240 litre mobile garbage bins (MGBs), are housed in the communal storage area for garbage (red MGBs) and commingled recyclables (paper, cardboard and containers in yellow MGBs). Space has been allocated within the storage area for the interim disposal of bulky items such as furniture and mattresses that are awaiting the appropriate waste collection.

A garden organics service is provided to the development due to the amount of green-space and garden material that is generated.

Effective management of the large number of bins for the development requires the clear separation of garbage, recycling, organics and bulky wastes. This is achieved by grouping the colour coded bins and locating them in defined areas within the waste storage area.

Access and security

The communal storage area is easily accessible to all residents. It is located in the basement carpark adjacent to the entrance and vehicle wash bay. Access to the storage area is open from within the carpark however carpark access is controlled via a security system.

Ongoing management

Residents are responsible for taking their recyclables, garbage and bulky items to the waste storage area and disposing of them appropriately.

A caretaker is employed to manage the large number of bins and maintain the waste storage area, as well as moving the bins along the basement ramp to and from the kerbside collection point.



Layout of bins and bulky items within the storage area

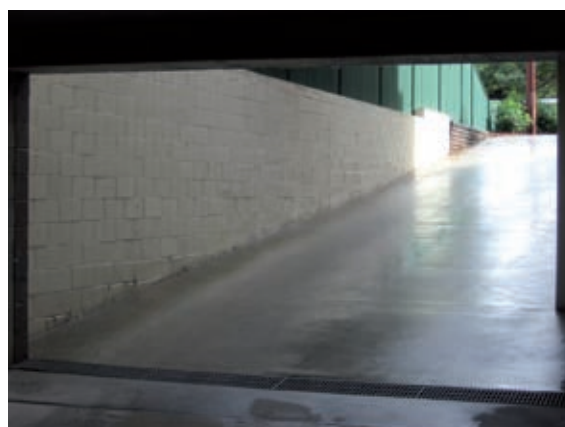


Access to the storage area from within the basement carpark

Education and signage

A series of educational initiatives are displayed to help residents understand how to use the services provided. These include:

- Educational messages and signage are displayed in multiple languages at the entrance to the storage area, as the development is located in a multi-culturally diverse locality
- Recycling posters are displayed on the walls within the storage area and provide information on what materials can be placed in commingled recycling bins
- Bin lids are colour coded to help identify what materials they should be used for
- Information stickers are displayed on recycling and organics bins to help control contamination
- A copy of the Council's recycling calendar is displayed.



Ramp from the basement to the kerbside



Bins placed out on the kerbside for collection



Recycling calendar displayed in the storage area



Education material in multiple languages