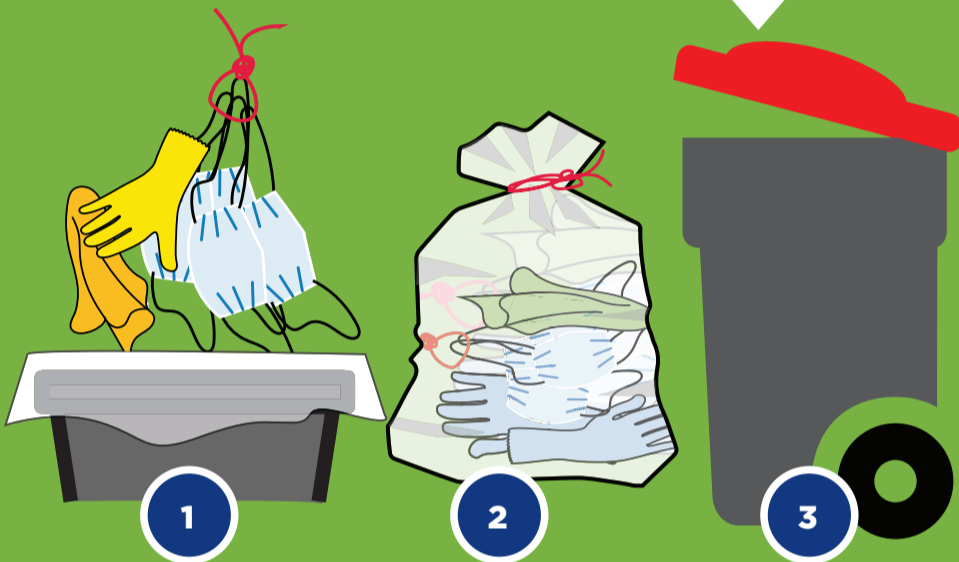


COVID-19: coronavirus

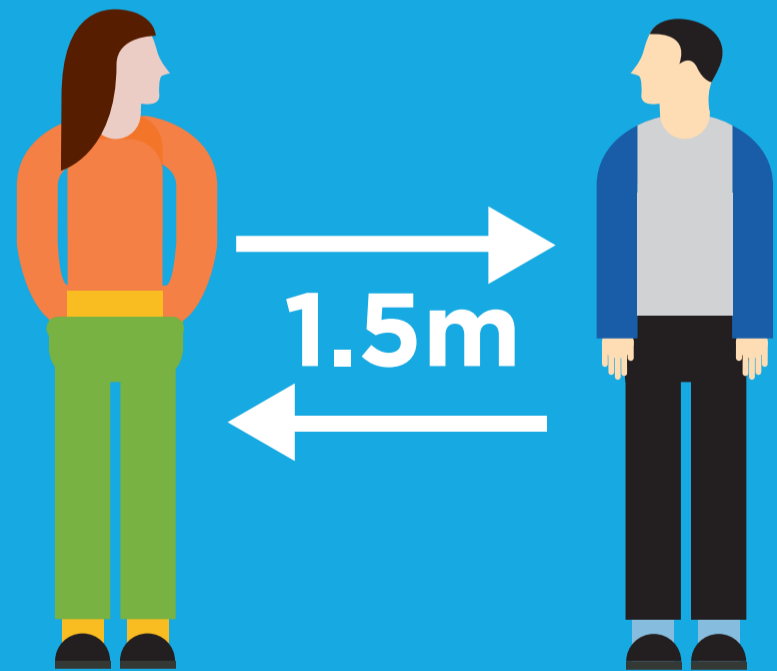
Help us manage waste and help stop the spread of COVID-19

Place all tissues, wipes, disposable gloves, masks in a bin liner and tie them up, before disposing them in your red bin



Regularly clean and disinfect common waste areas, bin handles and lids

Wash your hands for 20 seconds with soap and water, or hand sanitiser, before and after you visit the bin



keep your distance,
stay 1.5 metres apart

Advice about COVID-19 will change regularly. Keep up to date with COVID-19 advice for NSW residents, visit nsw.gov.au.

Council logo