

Scale: 1:15,000  
 Datum: GDA94 / Projection: MGA  
 Map Sheets:  
 1:25,000 Taree 9334-2-S  
 1:100,000 Wingham 9334  
 Contour Interval: 10 m

# Harvest Plan Operational Map

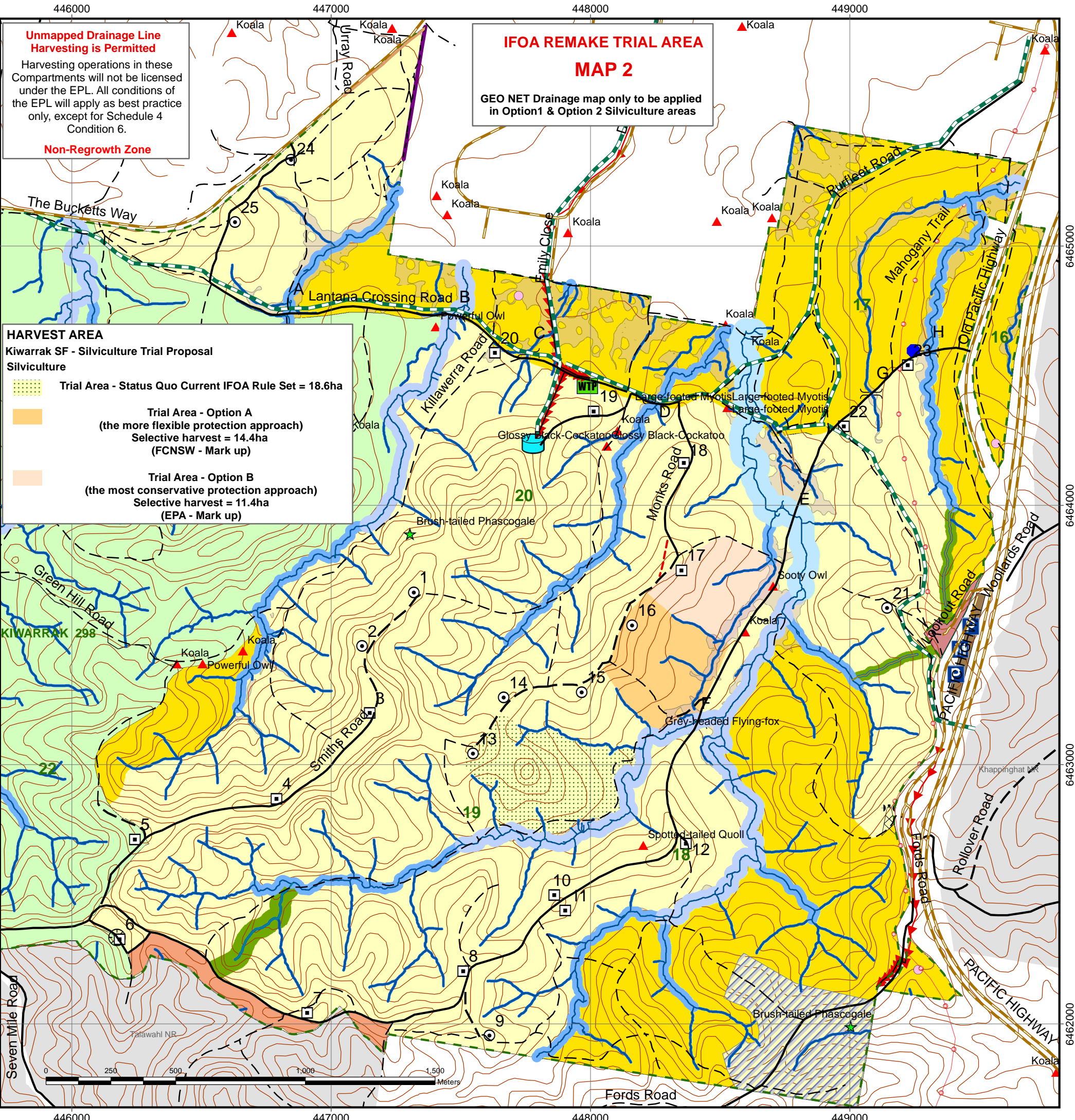
## Compartments 16, 17, 18, 19, 20

### Kiwarrak State Forest

#### Central Region - Taree Management Area

APPROVED  
 RM Approval Date: 29\_08\_13  
 Amendment Date: 17\_06\_14  
 Controlled Map: Kiwarrak 17181920\_HPOM\_Amend June14.pdf  
 Amendment Date: 7\_07\_2015  
 Controlled Map: Kiwarrak17\_20\_NewArea\_9July2015\_Amend2\_GEONET\_IFOA\_Remake\_TMTs

**GDA** **Forestry Corporation**  
 Prepared by: Ken Drew  
 Date: 07/06/2012  
 Amended by: B. Bailey  
 July 2015



**Unmapped Drainage Line**  
 Harvesting is Permitted  
 Harvesting operations in these Compartments will not be licensed under the EPL. All conditions of the EPL will apply as best practice only, except for Schedule 4 Condition 6.  
**Non-Regrowth Zone**

**IFOA REMAKE TRIAL AREA**  
**MAP 2**  
 GEO NET Drainage map only to be applied in Option1 & Option 2 Silviculture areas

**HARVEST AREA**  
 Kiwarrak SF - Silviculture Trial Proposal  
 Silviculture

- Trial Area - Status Quo Current IFOA Rule Set = 18.6ha
- Trial Area - Option A (the more flexible protection approach)  
 Selective harvest = 14.4ha (FCNSW - Mark up)
- Trial Area - Option B (the most conservative protection approach)  
 Selective harvest = 11.4ha (EPA - Mark up)

MAP FEATURES	OTHER MAP FEATURES	HARVEST AREA & EXCLUSION ZONES	DRAINAGE FEATURES
State Forest Boundary	Rest area Toilets Parking Area	<b>Base Net Area - (IHC 1&amp;2)</b>	Geonet Drainage Line
Compartments Boundary	Pump Station	<b>Harvest Area</b>	Class 1 (Protection 5m - ESA 1)
10 / 100 m Contour	Reservoir	General Management (FMZ 4 and 8)	Class 2 (Protection 20m - ESA 2)
State Forest	Telstra Tower	Basal Area Offset (not to be logged)	Class 3 (Protection 30m - ESA 2)
Private Property (cadastre)	Pacific Hwy Rest Area	<b>EXCLUSIONS</b>	Class 4 (Protection 50m - ESA 2)
Incorrect Fenced Boundary (refer - HP)	Aboveground Powerline	National Park	Water Point
<b>ROADS, DUMPS &amp; CROSSINGS</b>	Underground Power Line	EEC Exclusion (Alluvial Soils) Indicative.	<b>Threatened Species Records</b>
Sealed	telstra Cable	Talawahl NR Buffer - Logging Excluded	Records requiring prescription
Gravel Road	MCW_Water Pipe Lines	School Visual Buffer (10m - refer HP)	Brush-Tailed Phascogale record
Natural Surface Road	PGPs (Permanent Growth Plots)	<b>ESA 1 (Environmentally Significant Area 1)</b>	Brush-Tailed Phascogale Exclusion
Not to be used for haulage	Modified Harvest Area	Harvesting Protection (FMZ 3A)	Ecology point site (labelled on map)
New construction	Water body	Ridge & Headwater Habitat (40m/80m exclusion)	
Temporary Dry		RTA Acquired Land	
Temporary Wet			
Approved Crossing			
Quarry			