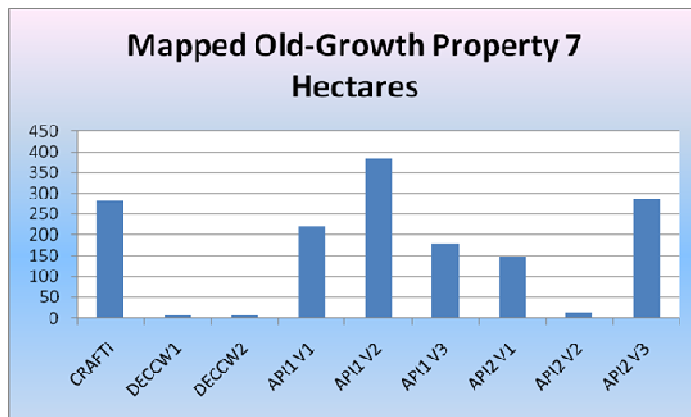


3.2.7 Property 7

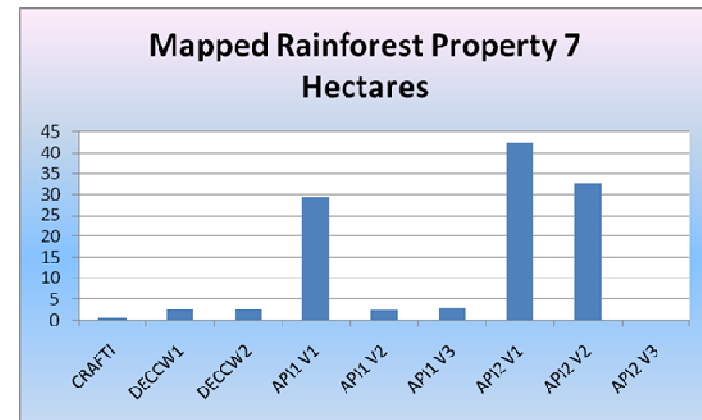
Overview of DECCW procedure: Landholder disputed CRAFTI mapping. DECCW office-based assessment was accepted by the landholder. No field inspection was undertaken for the purpose of assessing Old-Growth forest or Rainforest.

Contract API : version 1 - initial office-based API; version 2 - brief field inspection (no transects); version 3 – after transects measured on property.

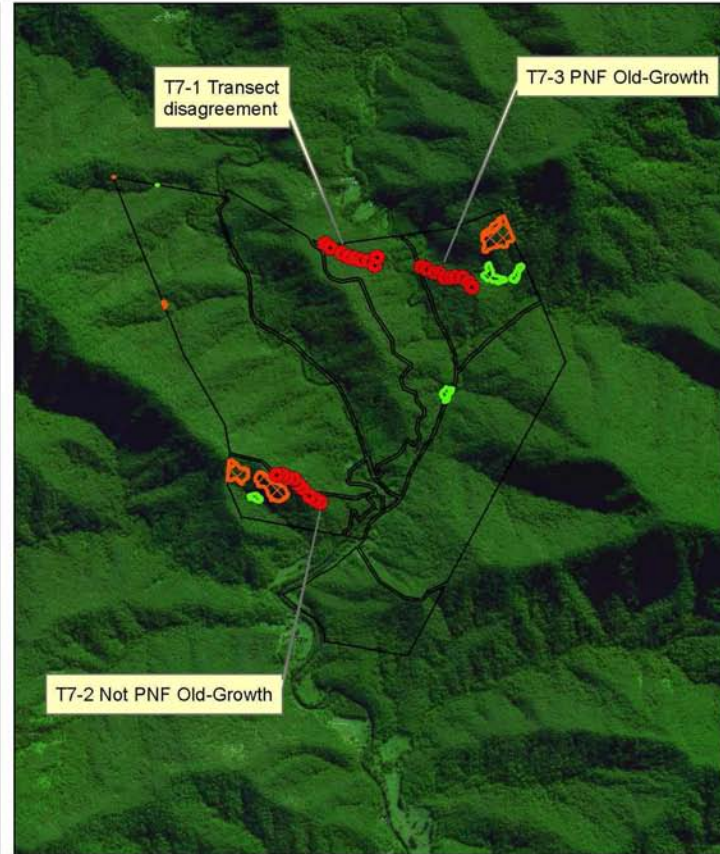
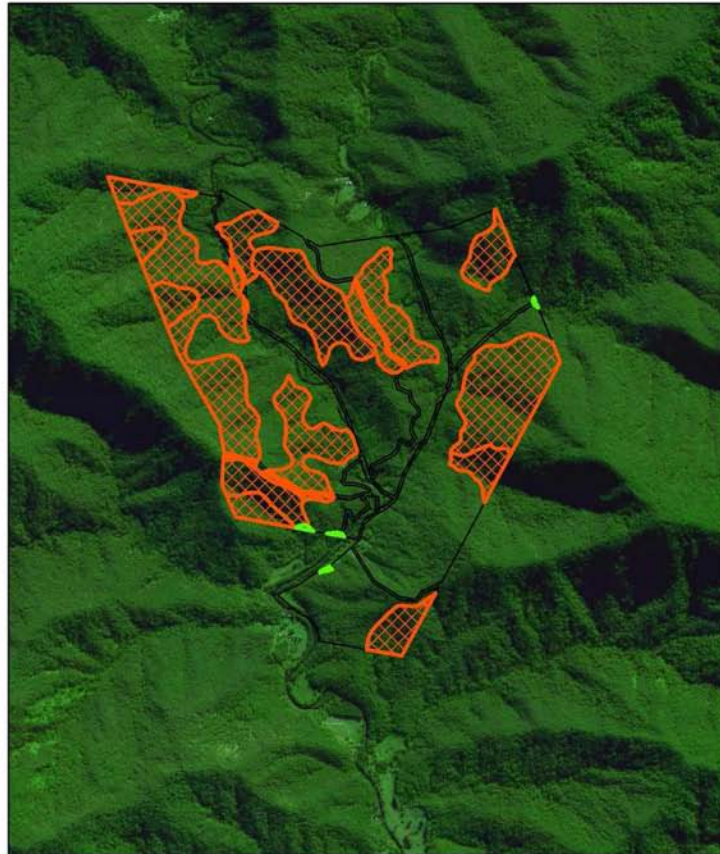
Mapped Old-Growth Property 7	
Source	Hectares
CRAFTI	281
DECCW1	8
DECCW2	8
API1 V1	221
API1 V2	384
API1 V3	177
API2 V1	146
API2 V2	15
API2 V3	287




Mapped Rainforest Property 7	
Source	Hectares
CRAFTI	1
DECCW1	3
DECCW2	3
API1 V1	29
API1 V2	2
API1 V3	3
API2 V1	42
API2 V2	33
API2 V3	0



Property 7 CRAFTI, DECCW



Crafti Mapping
 Rainforest 1 0.66 Ha
 Old Growth 1280.68 Ha



 18.10.2010


Disclaimer: Dimensions and locations are approximate. Liability is disclaimed for any error, omissions or inaccuracies contained within or arising from information on this map.

DECCW Mapping
 Note DECCW Mapping accepted by landholder - no field inspection

Rainforest	3	Ha
Old Growth	29	Ha

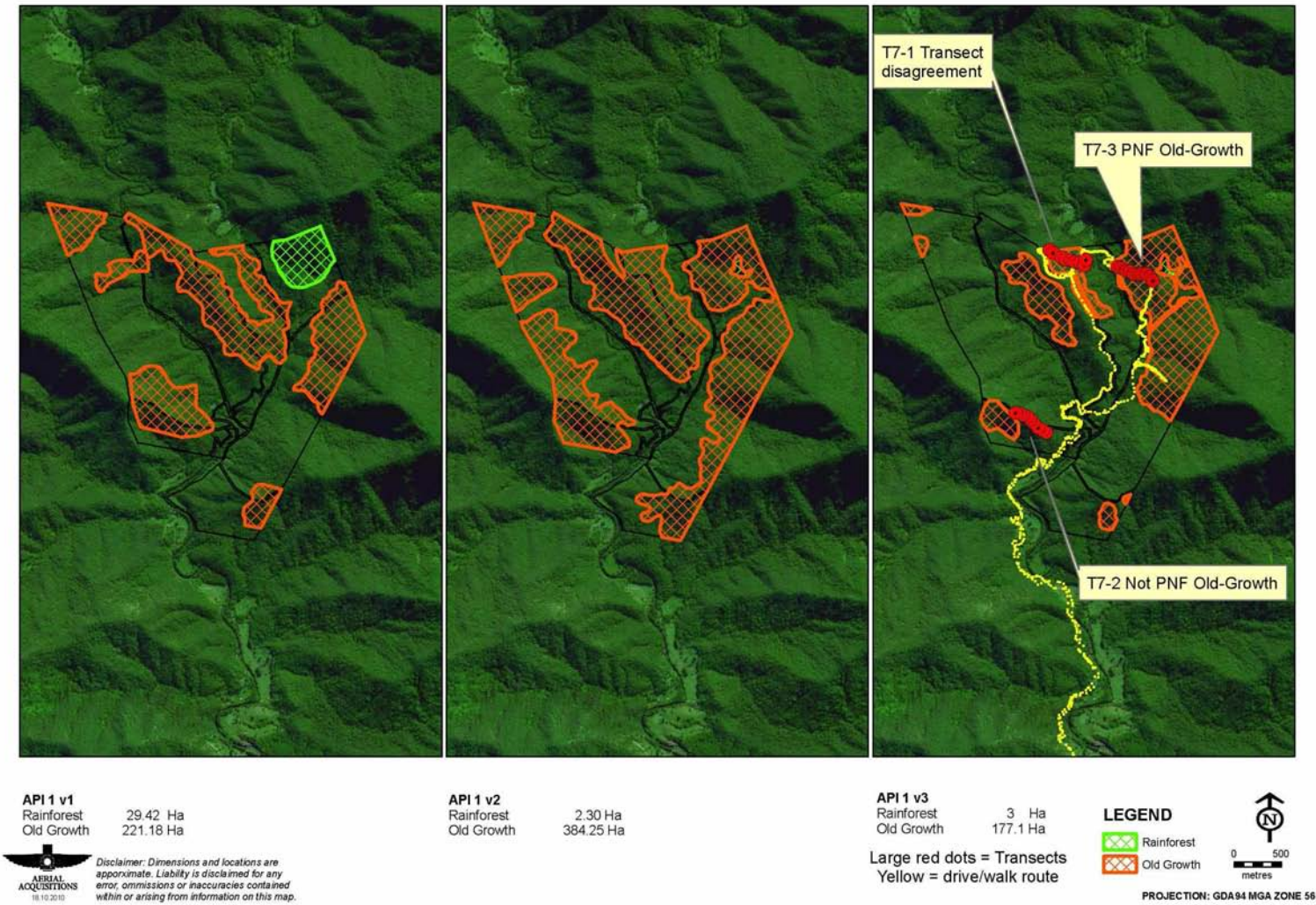
LEGEND

 Rainforest
 Old Growth


 0 500
 metres

PROJECTION: GDA94 MGA ZONE 56

Property 7 Contract API 1



Property 7 Contract API 2



API 2 v1
 Rainforest 42.4 Ha
 Old Growth 146.36 Ha



Disclaimer: Dimensions and locations are approximate. Liability is disclaimed for any error, omissions or inaccuracies contained within or arising from information on this map.

API 2 v2
 Rainforest 32.79 Ha
 Old Growth 15.17 Ha

API 2 v3
 Rainforest 0 Ha
 Old Growth 286.84 Ha

Large red dots = Transects
 Yellow = drive/walk route

LEGEND

Rainforest
 Old Growth



PROJECTION: GDA94 MGA ZONE 56

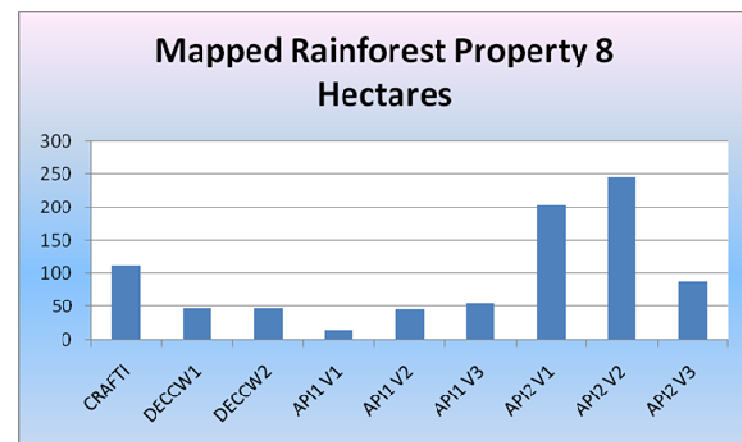
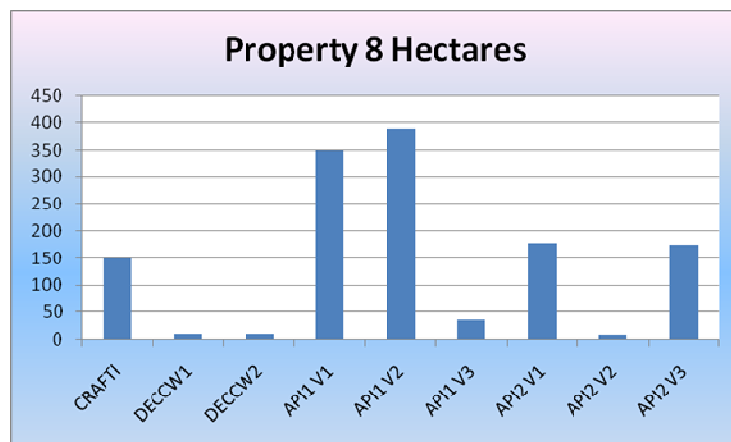
3.2.8 Property 8

Overview of DECCW procedure: Landholder disputed CRAFTI mapping. DECCW office-based assessment was accepted by the landholder. No field inspection was undertaken for the purpose of assessing Old-Growth forest or Rainforest.

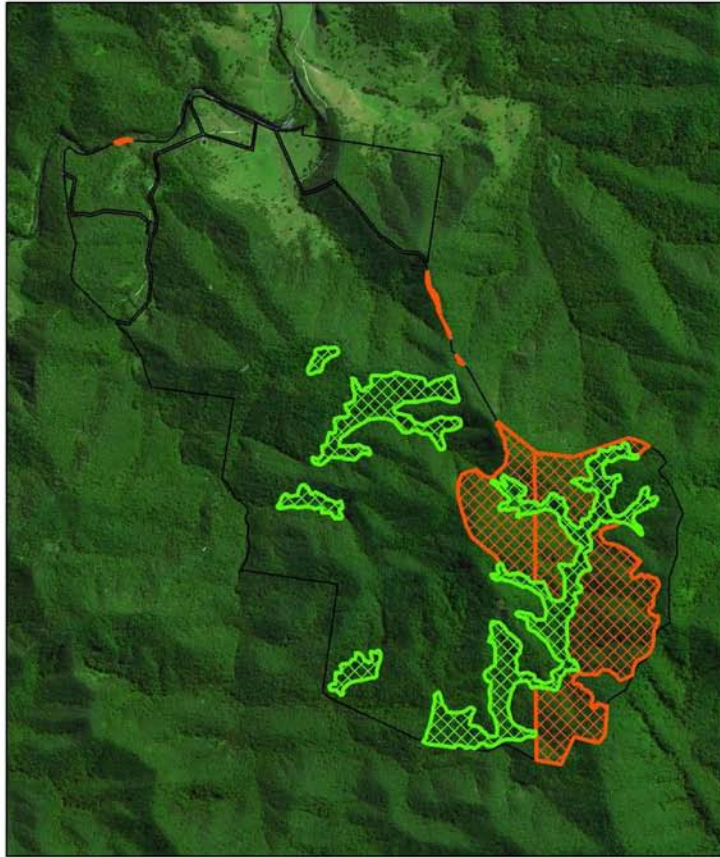
Contract API : version 1 - initial office-based API; version 2 - brief field inspection (no transects); version 3 – after transects measured on property.

Mapped Old-Growth Property 8	
Source	Hectares
CRAFTI	149
DECCW1	10
DECCW2	10
API1 V1	349
API1 V2	388
API1 V3	35
API2 V1	178
API2 V2	8
API2 V3	174

Mapped Rainforest Property 8	
Source	Hectares
CRAFTI	111.42
DECCW1	46.38
DECCW2	46.38
API1 V1	14.6
API1 V2	44.36
API1 V3	54.08
API2 V1	203.69
API2 V2	244.48
API2 V3	87.53



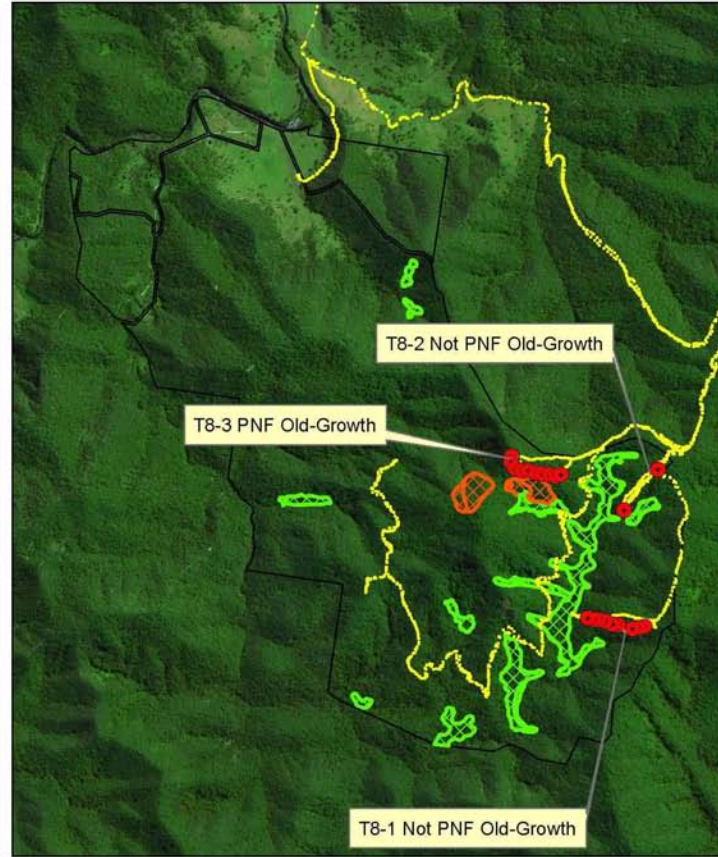
Property 8 CRAFTI, DECCW



Crafti Mapping
 Rainforest 111.42 Ha
 Old Growth 149.37 Ha

AIRIAL ACQUISITIONS
 18.10.2010

Disclaimer: Dimensions and locations are approximate. Liability is disclaimed for any error, omissions or inaccuracies contained within or arising from information on this map.



DECCW Mapping
 Note DECCW Mapping accepted by landholder
 - no field inspection MAPPING
 Rainforest 46.38 Ha
 Old Growth 9.99 Ha

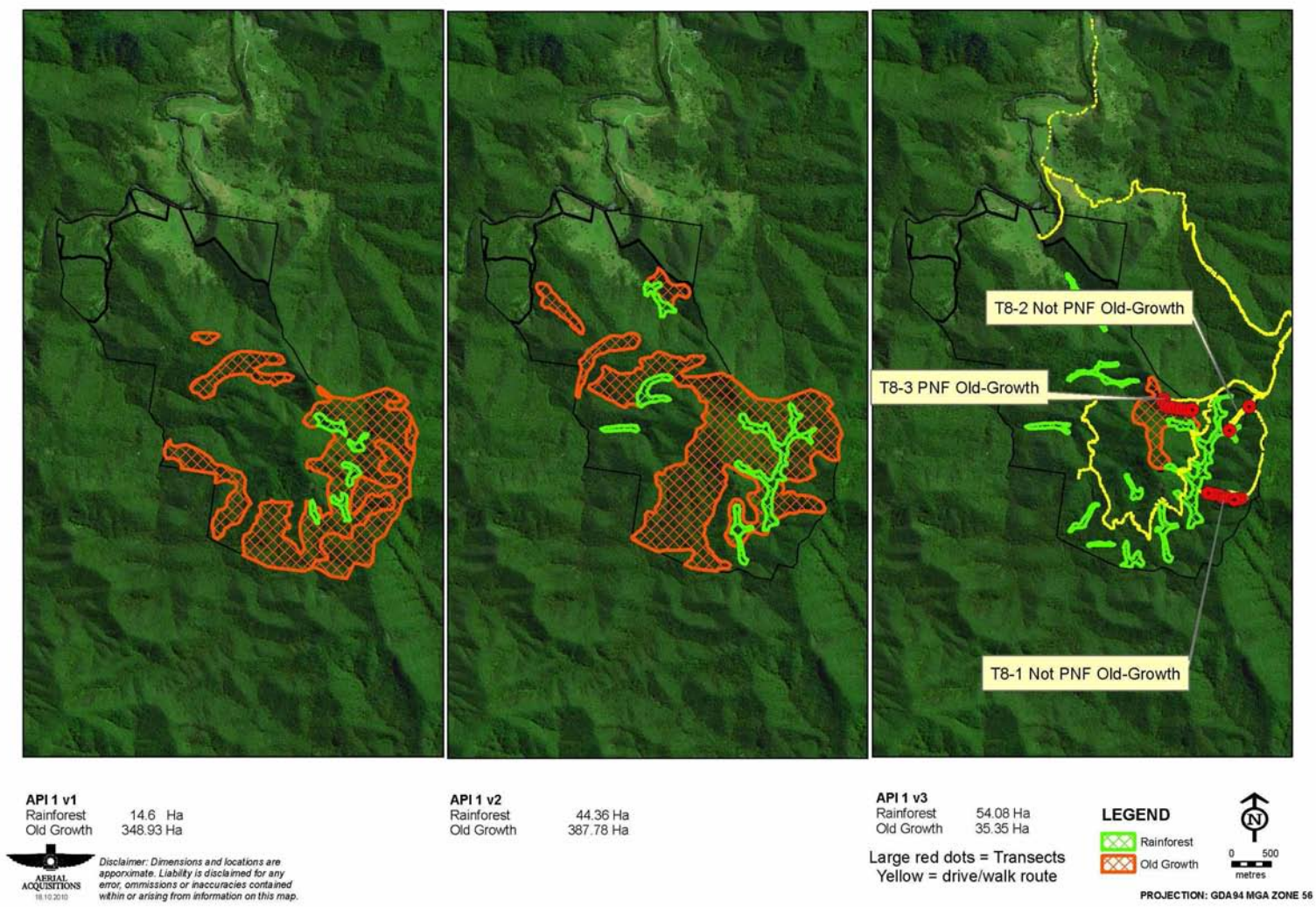
LEGEND

Rainforest
 Old Growth

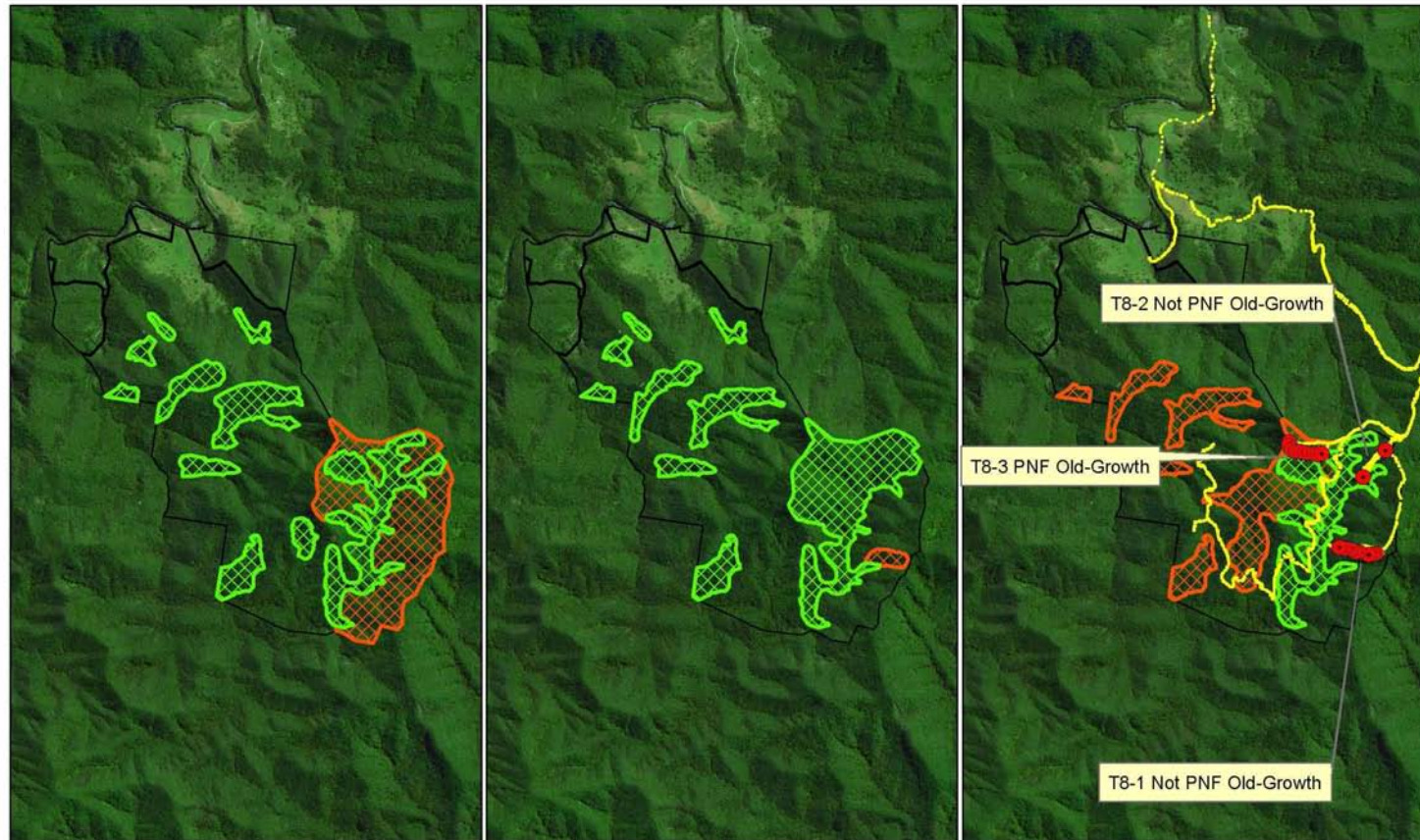
0 500
 metres

PROJECTION: GDA94 MGA ZONE 56

Property 8 Contract API 1



Property 8 Contract API 2



API 2 v1
Rainforest 203.69 Ha
Old Growth 177.97 Ha

AERIAL ACQUISITIONS
15.10.2019

Disclaimer: Dimensions and locations are approximate. Liability is disclaimed for any error, omissions or inaccuracies contained within or arising from information on this map.

API 2 v2
Rainforest 244.48 Ha
Old Growth 7.62 Ha

API 2 v3
Rainforest 87.53 Ha
Old Growth 174.47 Ha

Large red dots = Transects
Yellow = drive/walk route

LEGEND

Green outline = Rainforest
Orange outline = Old Growth

0 500 metres

PROJECTION: GDA94 MGA ZONE 56

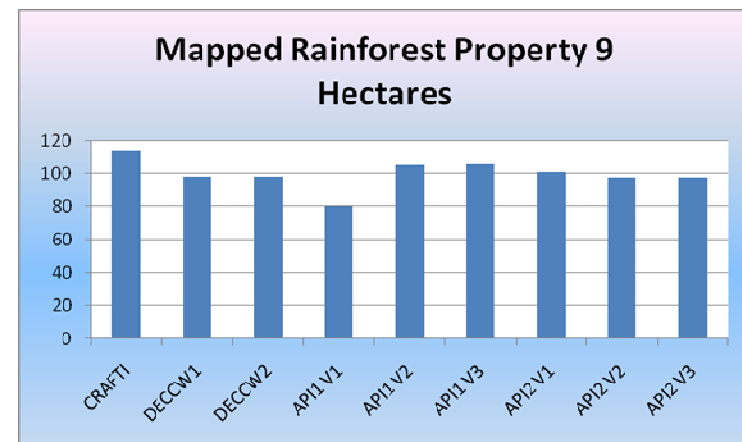
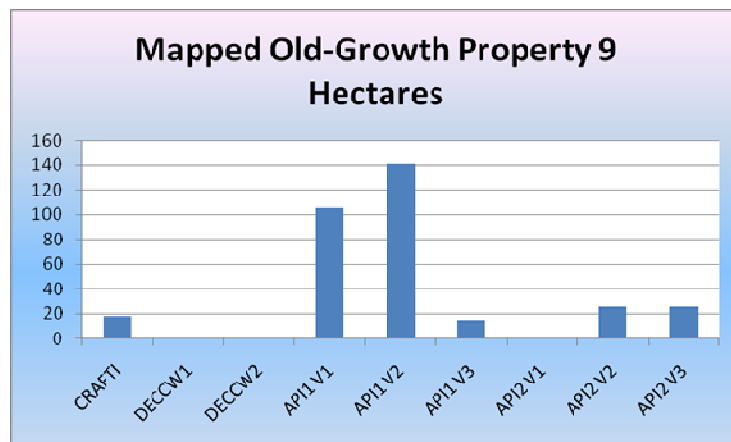
3.2.9 Property 9

Overview of DECCW procedure: Landholder disputed CRAFTI mapping. DECCW office-based re-mapping was accepted by the landholder. No field inspection was undertaken for the purpose of mapping Old-Growth forest or Rainforest.

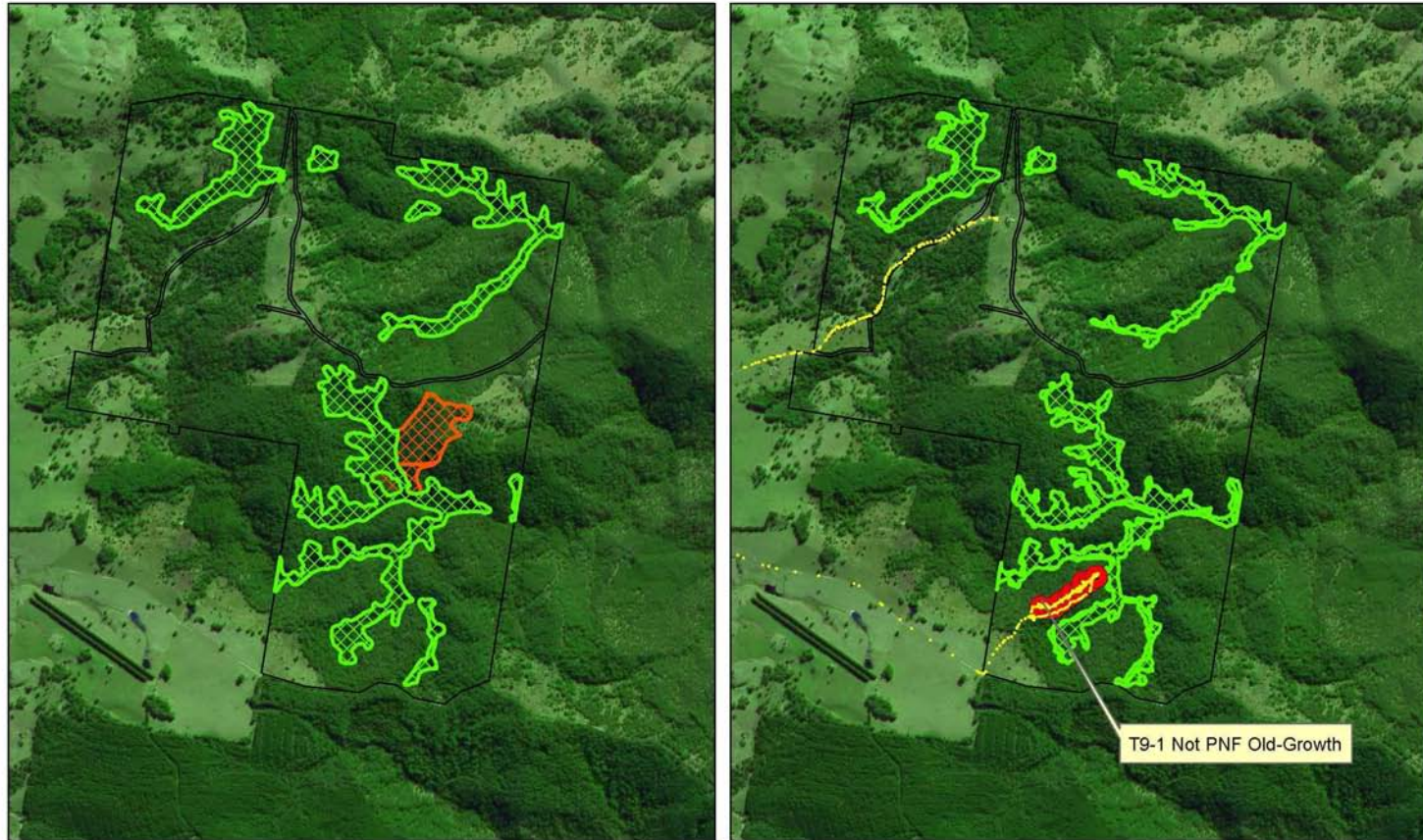
Contract API : version 1 - initial office-based API; version 2 - brief field inspection (no transects); version 3 – after transects measured on property

Mapped Old-Growth Property 9	
Source	Hectares
CRAFTI	18
DECCW1	0
DECCW2	0
API1 V1	106
API1 V2	141
API1 V3	15
API2 V1	0
API2 V2	26
API2 V3	26

Mapped Rainforest Property 9	
Source	Hectares
CRAFTI	113.51
DECCW1	98.12
DECCW2	98.12
API1 V1	79.65
API1 V2	105.23
API1 V3	105.57
API2 V1	100.72
API2 V2	97.36
API2 V3	97.36



Property 9 CRAFTI, DECCW



Crafti Mapping
 Rainforest 113.51 Ha
 Old Growth 17.65 Ha

AERIAL ACQUISITIONS
 15.10.2018

Disclaimer: Dimensions and locations are approximate. Liability is disclaimed for any error, omissions or inaccuracies contained within or arising from information on this map.

DECCW Mapping
 Note DECCW Mapping accepted by landholder
 no field inspection

Rainforest 98.12 Ha
 Old Growth 0 Ha

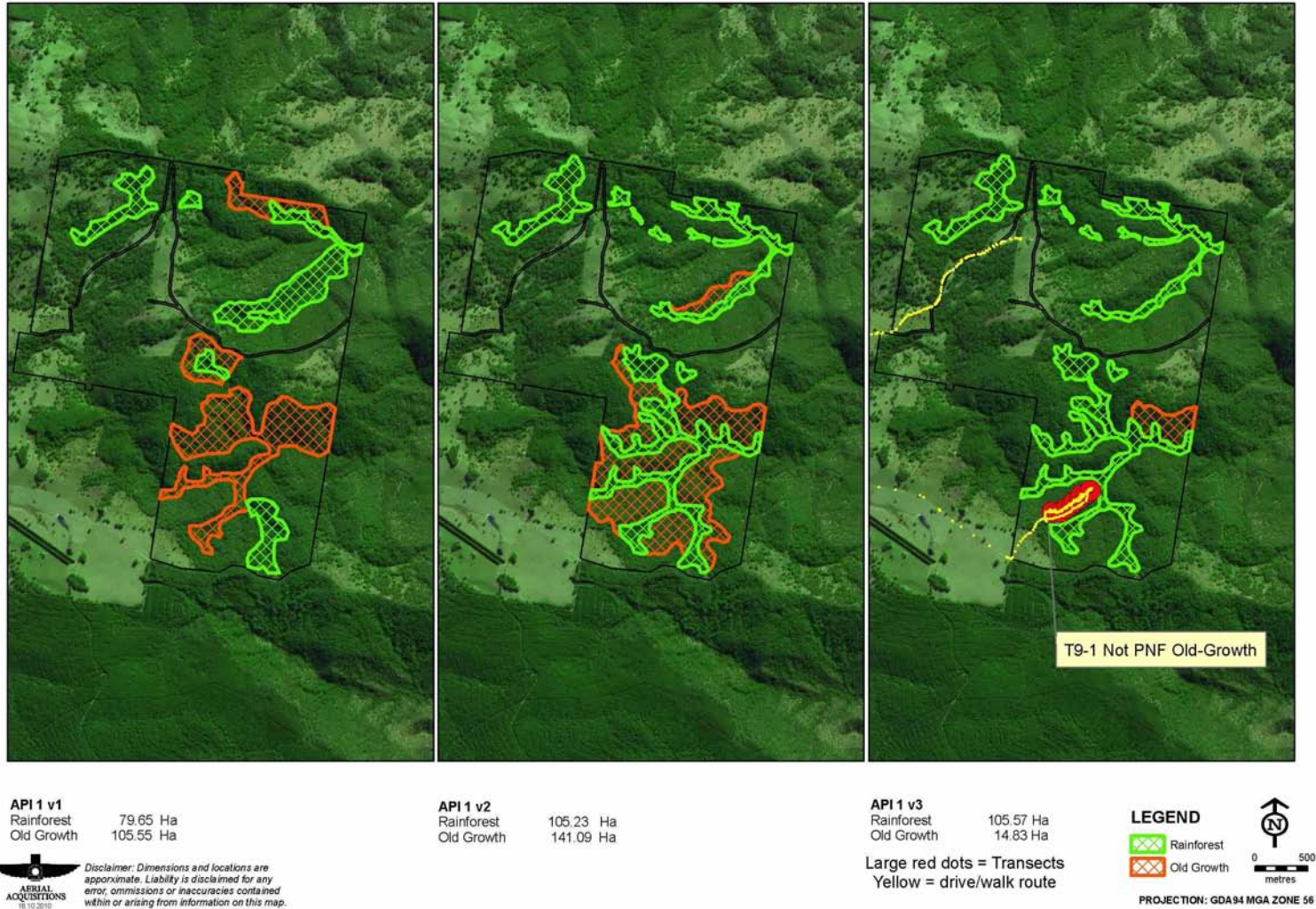
LEGEND

Rainforest
 Old Growth

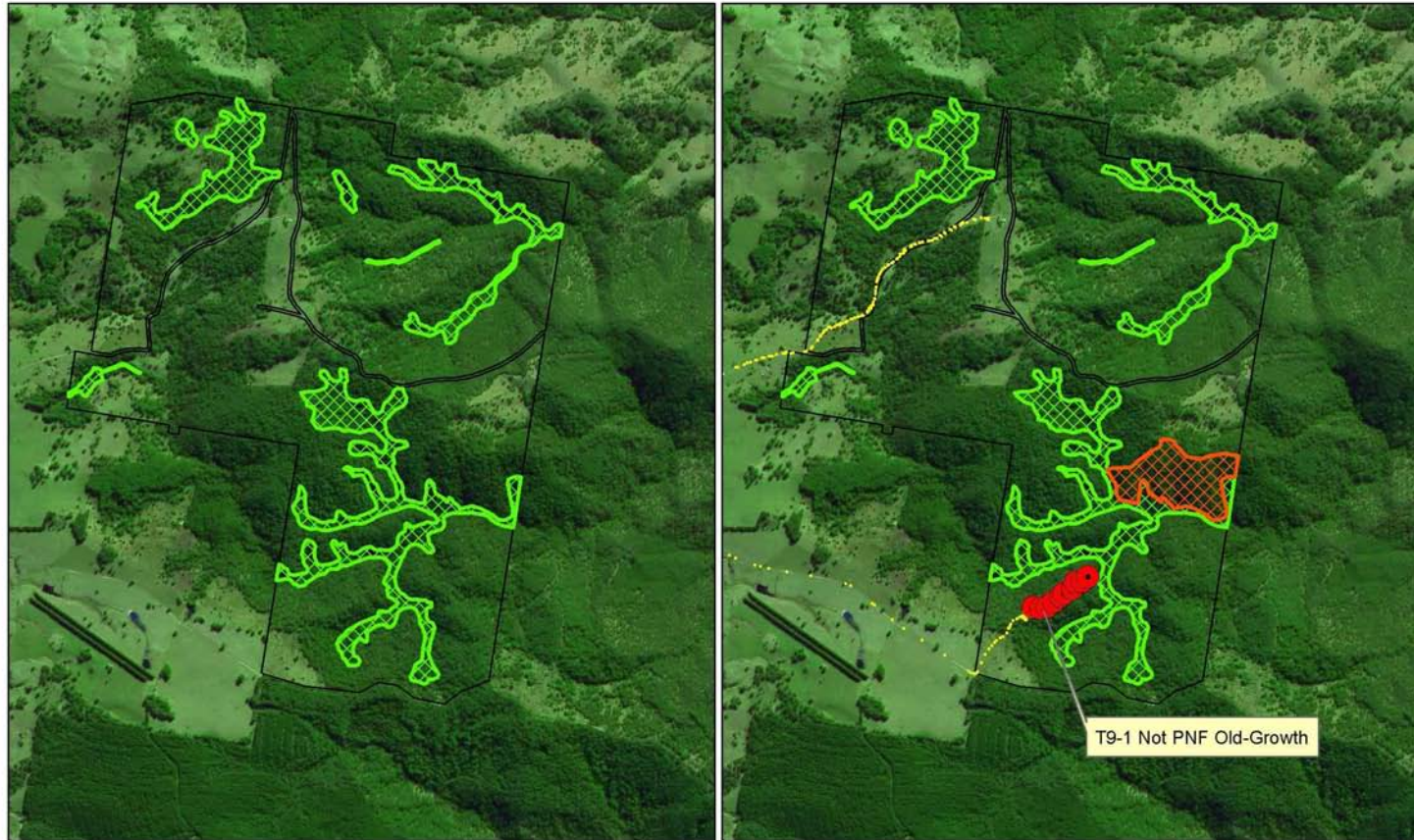
0 500
 metres

PROJECTION: GDA94 MGA ZONE 56

Property 9 Contract API 1



Property 9 Contract API 2

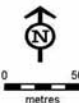


API 2 v1
 Rainforest 100.72 Ha
 Old Growth 0 Ha



Disclaimer: Dimensions and locations are approximate. Liability is disclaimed for any error, omissions or inaccuracies contained within or arising from information on this map.

API 2 V2 and V3
 Note NO DIFFERENCE BETWEEN V2 and V3
 Rainforest 97.36 Ha
 Old Growth 25.59 Ha

LEGEND

Large red dots = Transects
 Yellow = drive/walk route

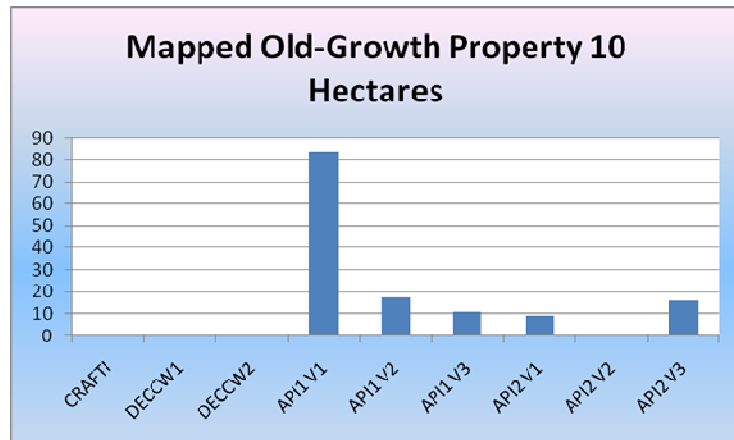
PROJECTION: GDA94 MGA ZONE 56

3.2.10 Property 10

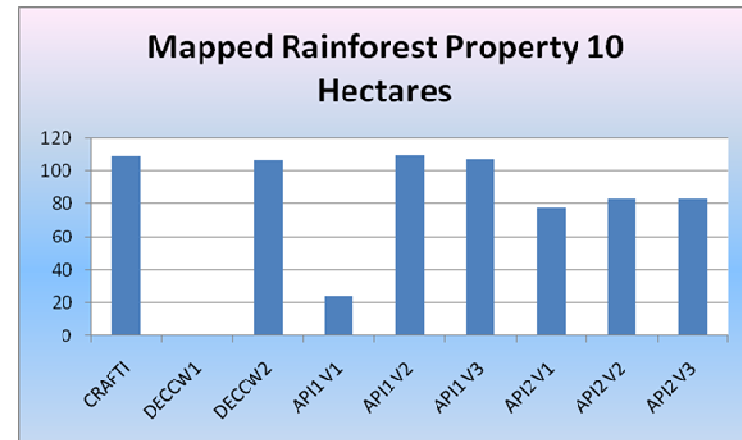
Overview of DECCW procedure: Landholder disputed CRAFTI mapping. DECCW office-based re-mapping was not accepted by the landholder. Field inspection was undertaken and once the map was explained to the landholder it was accepted.

Contract API : version 1 - initial office-based API; version 2 - brief field inspection (no transects); version 3 – after transects measured *on other properties*.

Mapped Old-Growth Property 10	
Source	Hectares
CRAFTI	0
DECCW1	0
DECCW2	0
API1 V1	83
API1 V2	17
API1 V3	11
API2 V1	9
API2 V2	0
API2 V3	16



Mapped Rainforest Property 10	
Source	Hectares
CRAFTI	108.46
DECCW1	0
DECCW2	106.41
API1 V1	24.06
API1 V2	109.11
API1 V3	106.91
API2 V1	77.2
API2 V2	82.57
API2 V3	82.57



Property 10 CRAFTI, DECCW

**Crafti Mapping**

Rainforest 108.46 Ha
Old Growth 0 Ha



Disclaimer: Dimensions and locations are approximate. Liability is disclaimed for any error, omissions or inaccuracies contained within or arising from information on this map.

DECCW Pre Mapping

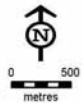
Rainforest 106.41 Ha
Old Growth 0 Ha

DECCW Final Mapping

Landholder disputed DECCW mapping,
but agreed upon field inspection
Rainforest 106.41 Ha
Old Growth 0 Ha

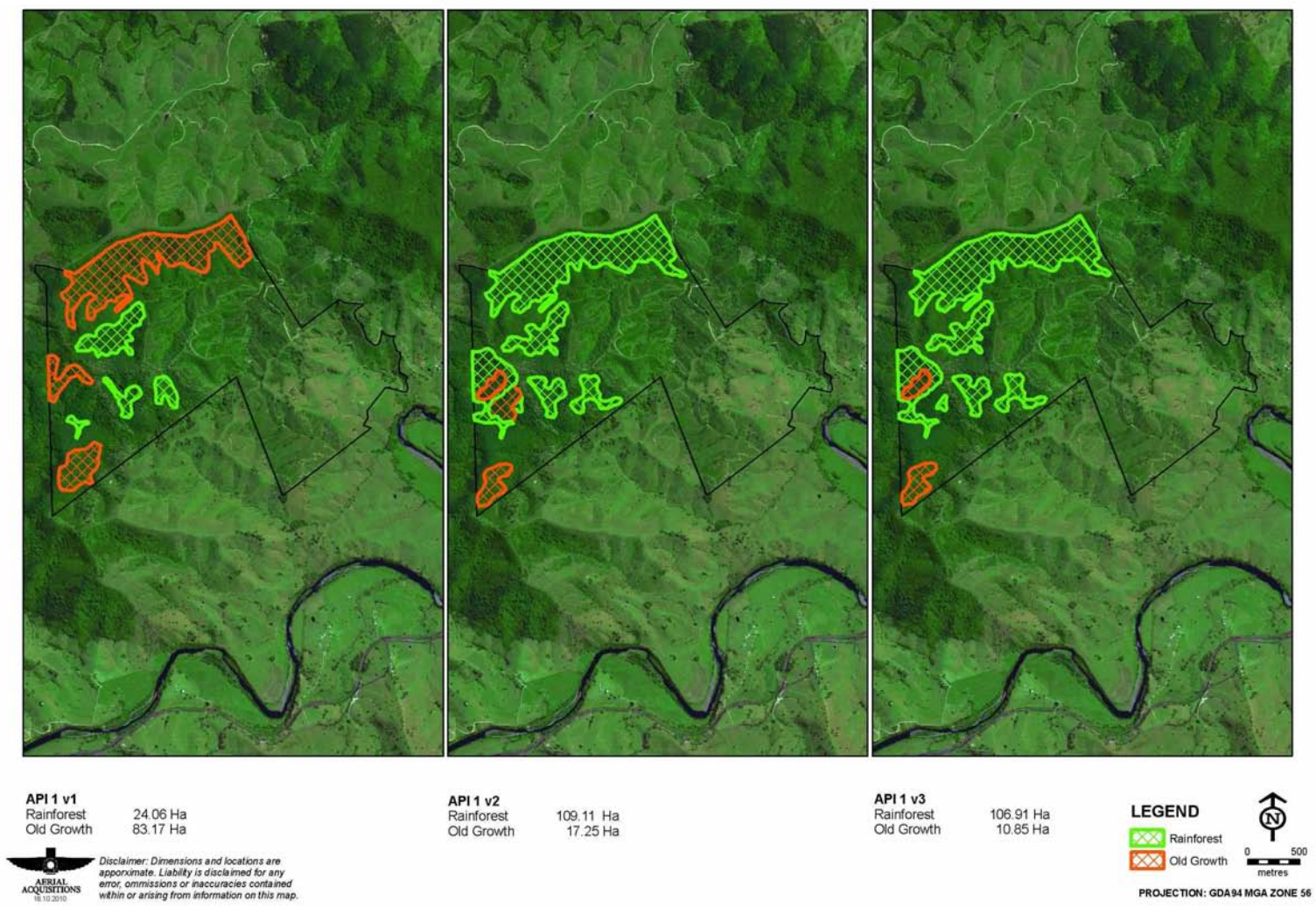
LEGEND

 Rainforest
 Old Growth

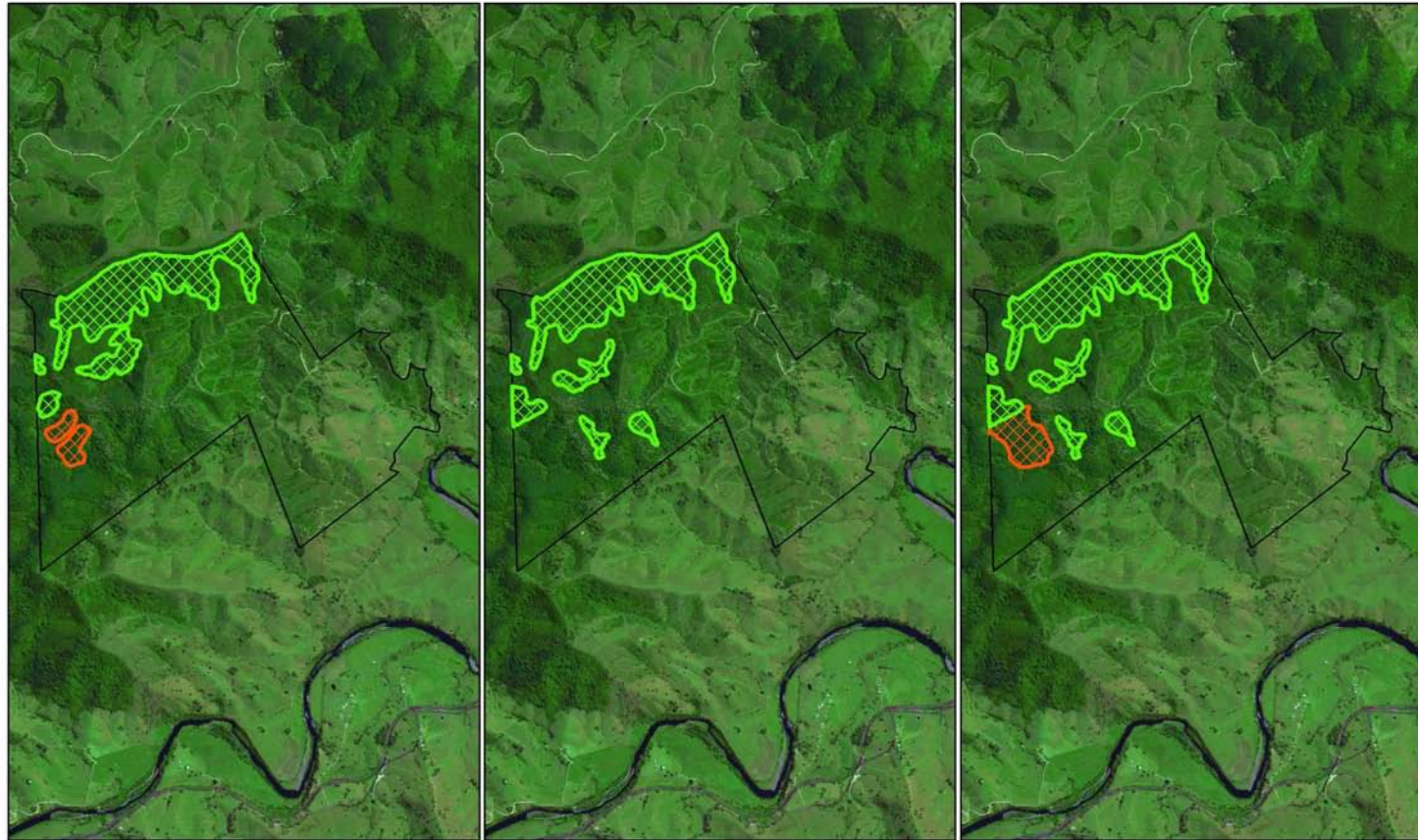


PROJECTION: GDA94 MGA ZONE 56

Property 10 Contract API 1



| Property 10 Contract API 2



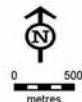
API 2 v1
Rainforest 77.2 Ha
Old Growth 8.94 Ha



Disclaimer: Dimensions and locations are approximate. Liability is disclaimed for any error, omissions or inaccuracies contained within or arising from information on this map.

API 2 v2
Rainforest 82.57 Ha
Old Growth 0 Ha

API 2 v3
Rainforest 82.57 Ha
Old Growth 15.98 Ha

LEGEND

PROJECTION: GDA94 MGA ZONE 56

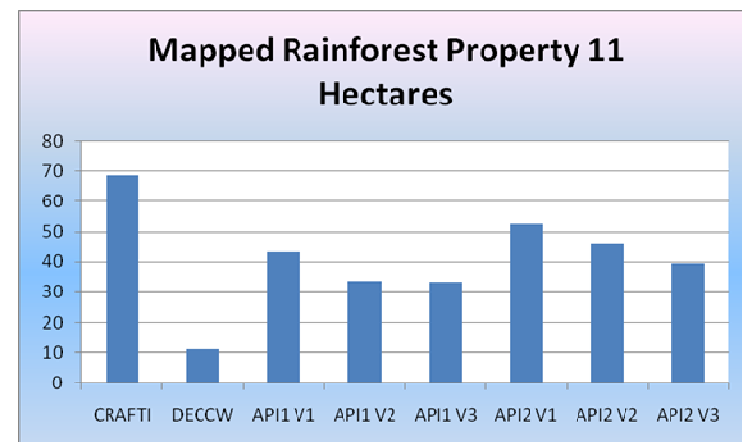
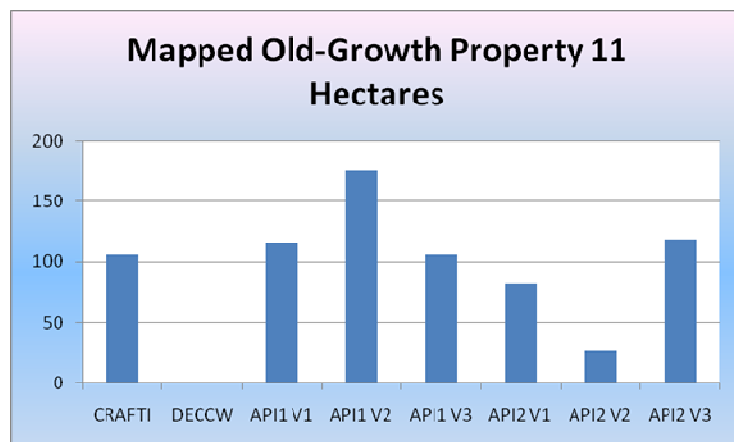
3.2.11 Property 11

Overview of DECCW procedure: Landholder disputed CRAFTI mapping. DECCW preformed mapping of Old-Growth and Rainforest after field inspection.

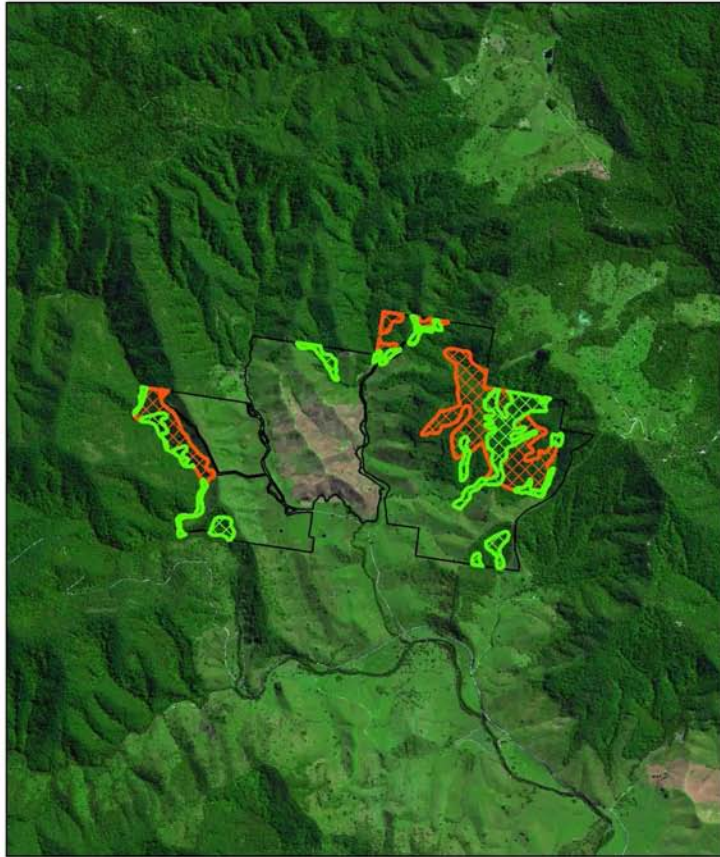
Contract API : version 1 - initial office-based API; version 2 - brief field inspection (no transects); version 3 – after transects measured on property.

Mapped Old-Growth Property 11	
Source	Hectares
CRAFTI	106
DECCW	0
API1 V1	116
API1 V2	176
API1 V3	106
API2 V1	83
API2 V2	27
API2 V3	119

Mapped Rainforest Property 11	
	Hectares
CRAFTI	68.83
DECCW	11.26
API1 V1	43.2
API1 V2	33.75
API1 V3	33.29
API2 V1	52.67
API2 V2	46.01
API2 V3	39.29

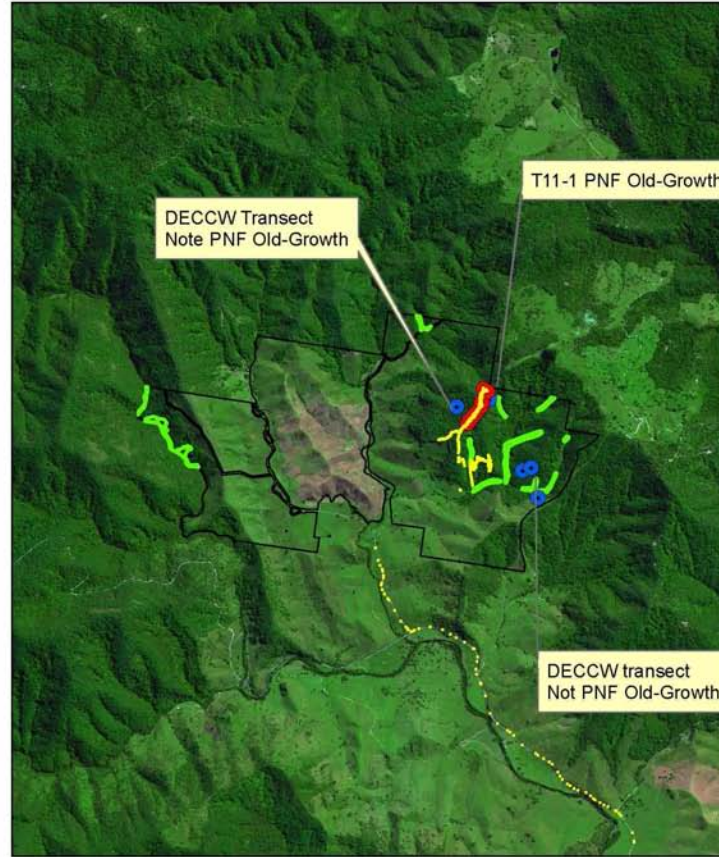


Property 11 CRAFTI, DECCW



Crafti Mapping
 Rainforest 68.83 Ha
 Old Growth 105.88 Ha

Disclaimer: Dimensions and locations are approximate. Liability is disclaimed for any error, omissions or inaccuracies contained within or arising from information on this map.



DECCW Final Mapping
 Rainforest 11.26 Ha
 Old Growth 0 Ha

Red/Blue dots= Transect

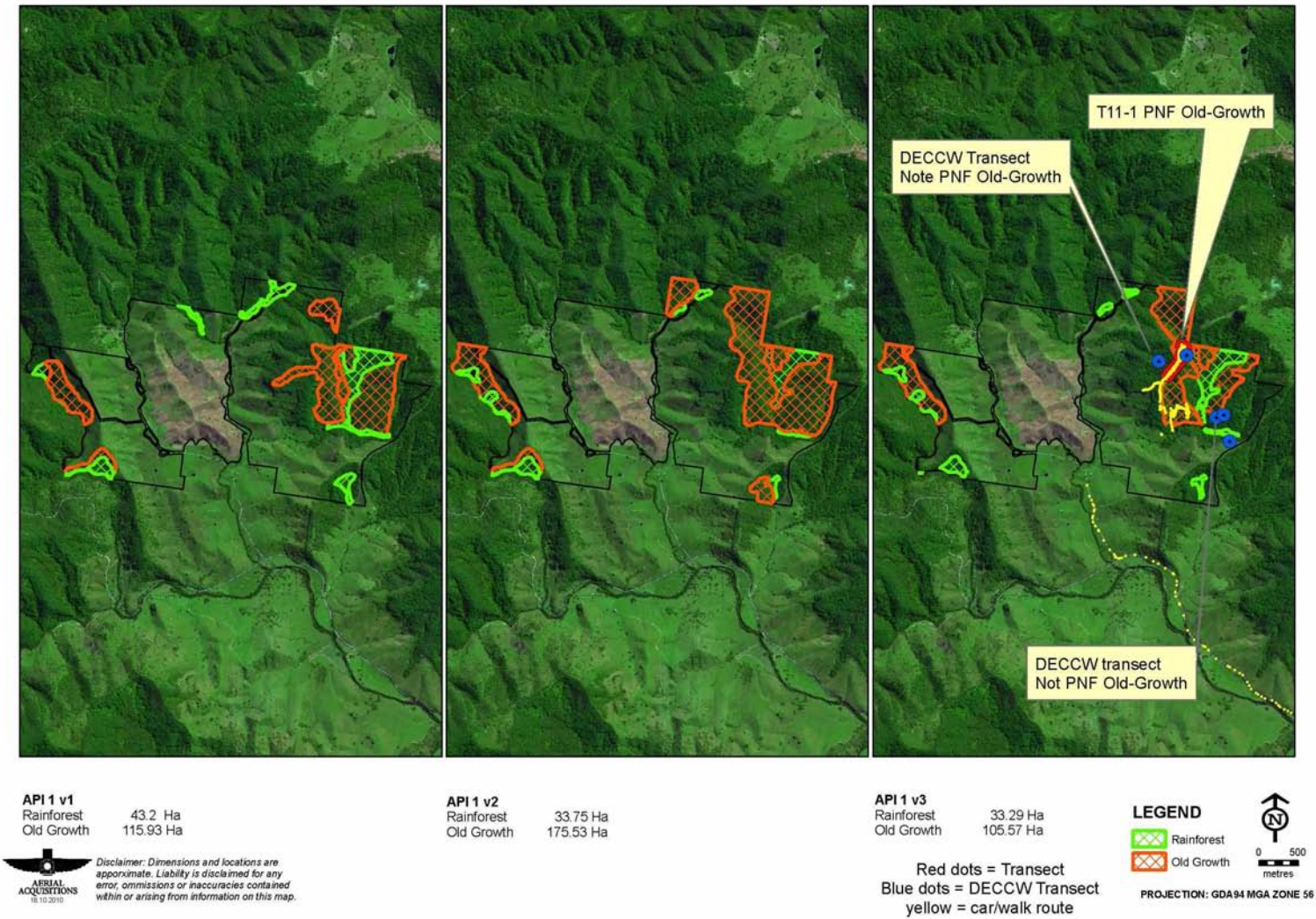
LEGEND

- Rainforest
- Old Growth

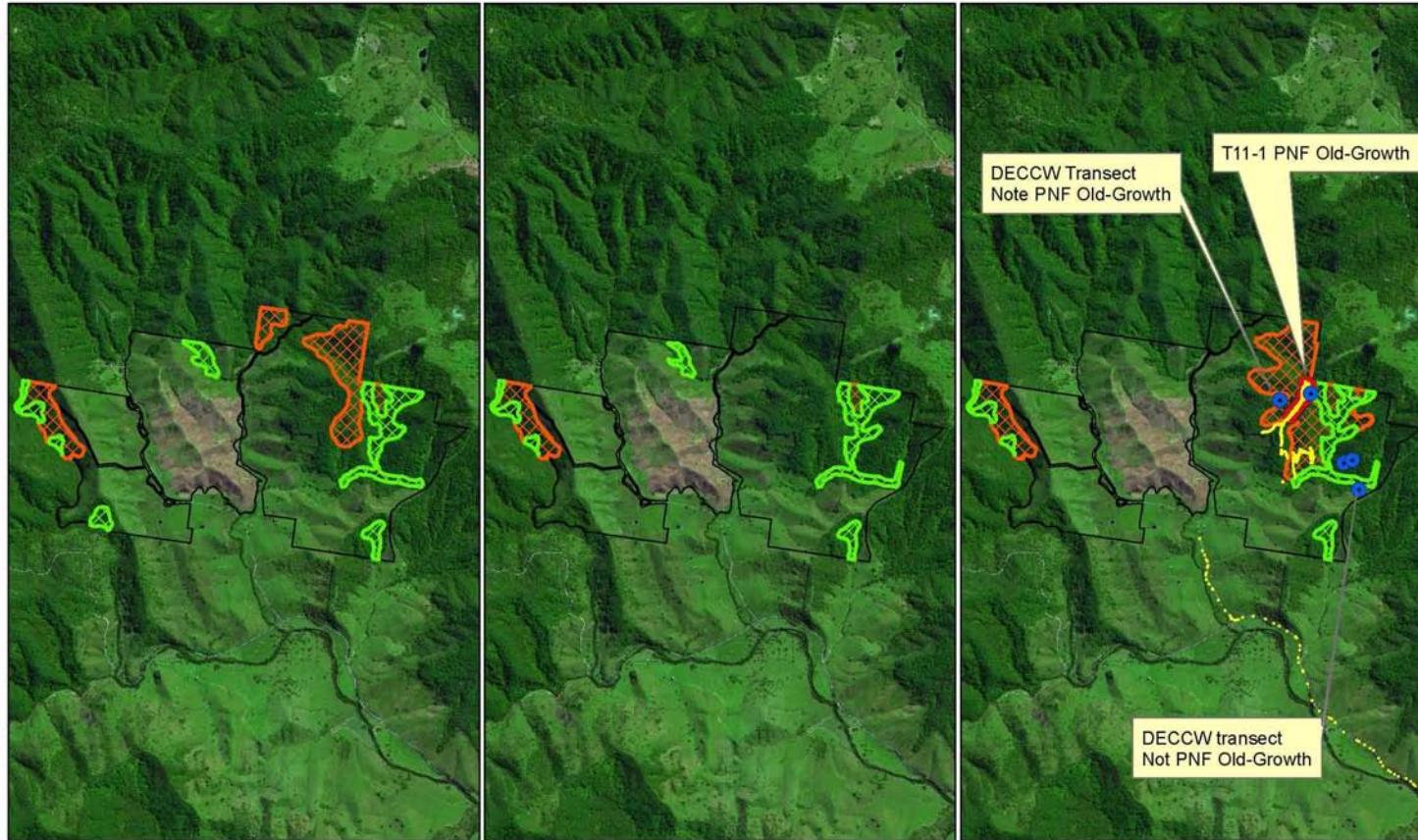
0 500 metres

PROJECTION: GDA94 MGA ZONE 56

Property 11 Contract API 1



Property 11 Contract API 2



API 2 v1
 Rainforest 52.67 Ha
 Old Growth 82.72 Ha



Disclaimer: Dimensions and locations are approximate. Liability is disclaimed for any error, omissions or inaccuracies contained within or arising from information on this map.

API 2 v2
 Rainforest 46.01 Ha
 Old Growth 26.63 Ha

API 2 v3
 Rainforest 39.29 Ha
 Old Growth 118.95 Ha

LEGEND

Rainforest
 Old Growth



PROJECTION: GDA94 MGA ZONE 56

Red dots = Transect
 Blue dots = DECCW Transect
 yellow = car/walk route

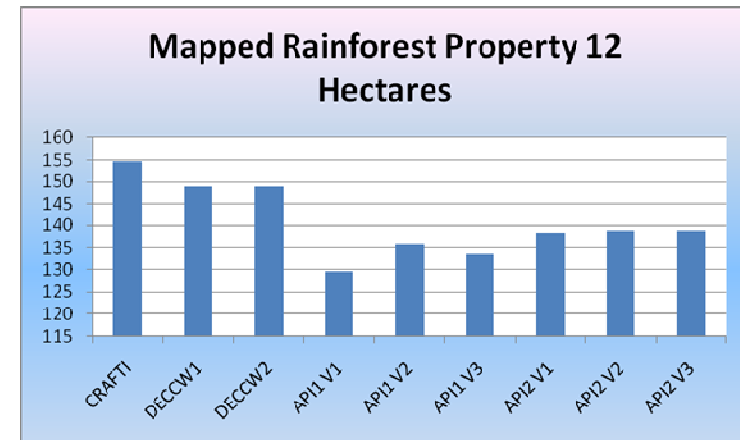
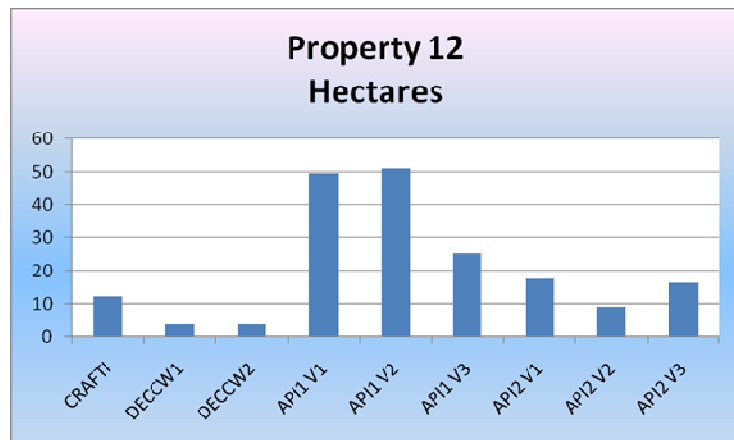
3.2.12 Property 12

Overview of DECCW procedure: Landholder disputed CRAFTI mapping. DECCW preformed office-based re-mapping of Old-Growth and Rainforest. The landholder disputed the re-mapping however after field inspection with a PNF office the mapping was accepted.

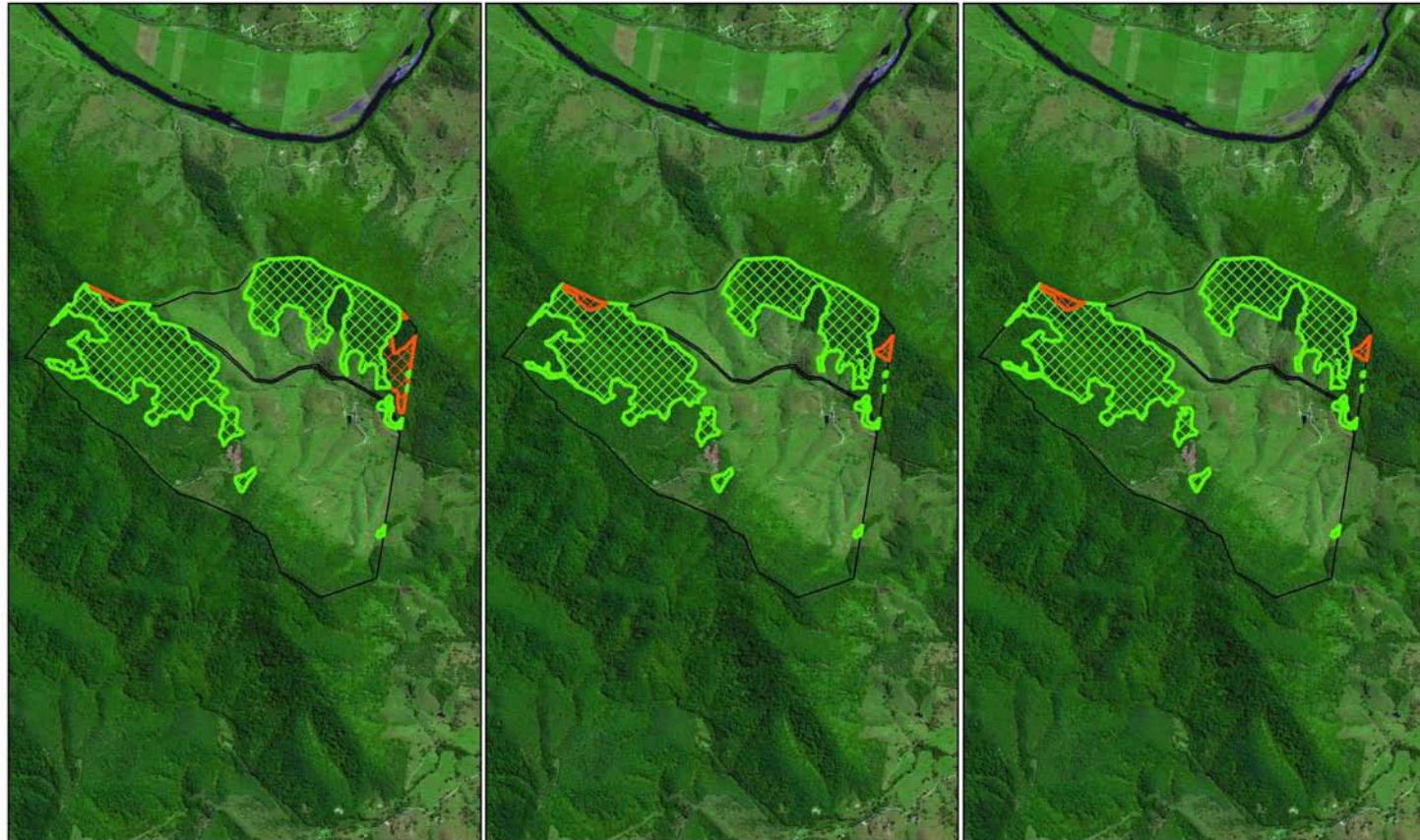
Contract API : version 1 - initial office-based API; version 2 - brief field inspection (no transects) on *other properties*; version 3 – after transects measured on *other properties*

Source	Property 12 Hectares
CRAFTI	12
DECCW1	4
DECCW2	4
API1 V1	50
API1 V2	51
API1 V3	25
API2 V1	18
API2 V2	9
API2 V3	16


Source	Property 12 Hectares
CRAFTI	154.65
DECCW1	148.93
DECCW2	148.93
API1 V1	129.45
API1 V2	135.83
API1 V3	133.64
API2 V1	138.41
API2 V2	138.78
API2 V3	138.78



Property 12 CRAFTI, DECCW



Crafti Mapping
Rainforest 154.65 Ha
Old Growth 12.28 Ha

 DISCLAIMER: Dimensions and locations are approximate. Liability is disclaimed for any error, omissions or inaccuracies contained within or arising from information on this map.

DECCW Pre Mapping
Rainforest 148.93 Ha
Old Growth 3.64 Ha

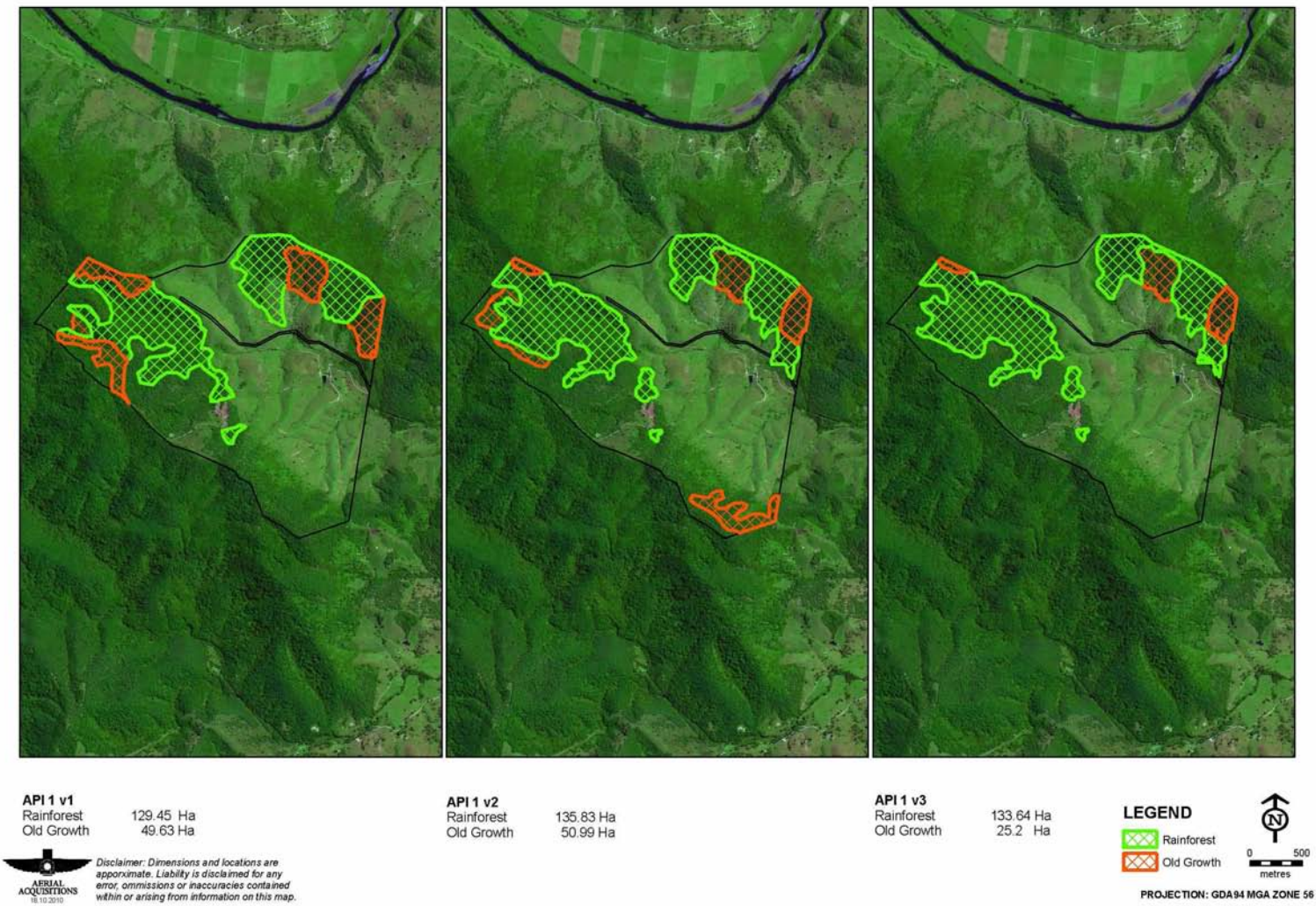
DECCW Final Mapping
Rainforest 148.93 Ha
Old Growth 3.64 Ha

LEGEND

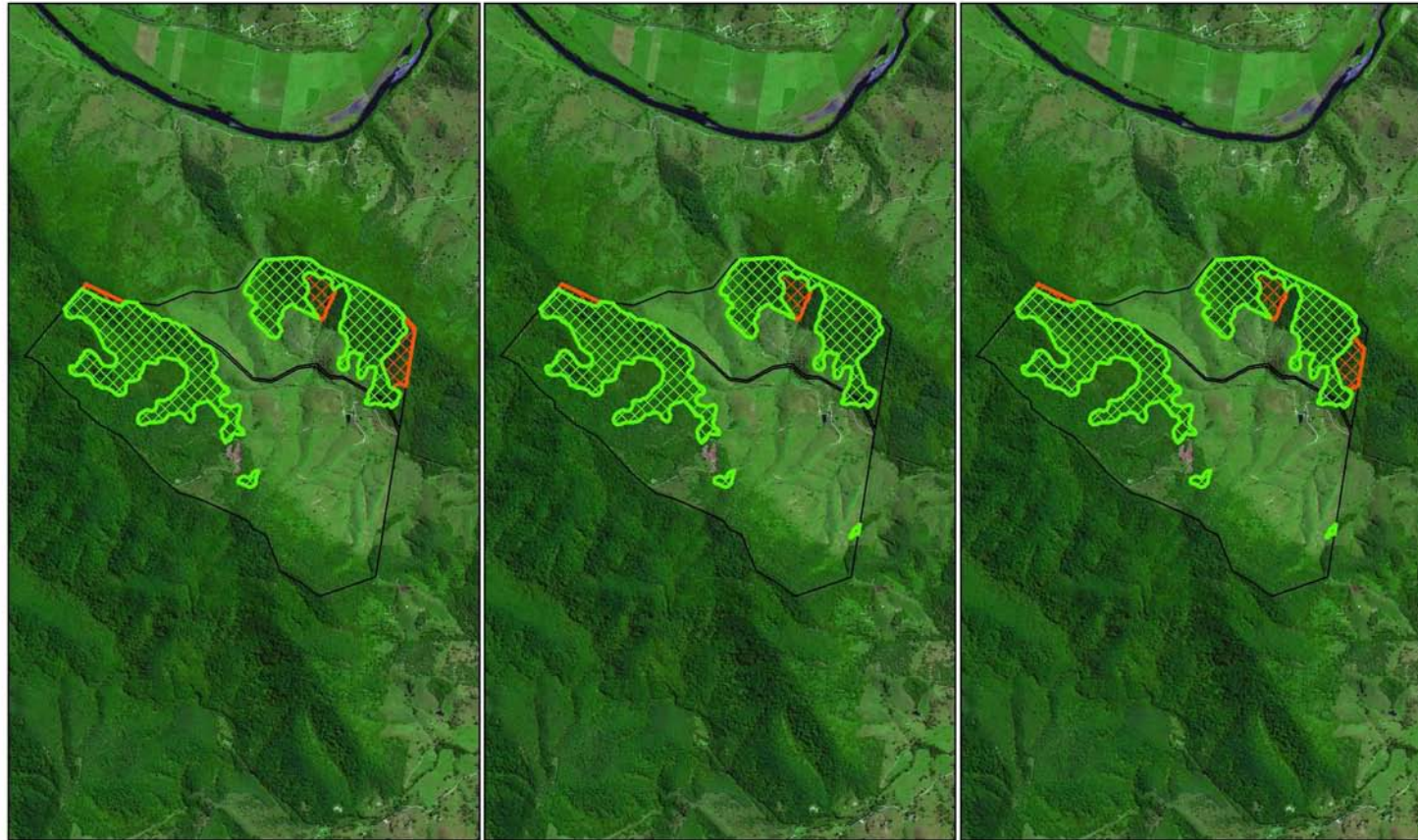
 Rainforest
 Old Growth

 0 500 metres
PROJECTION: GDA94 MGA ZONE 56

Property 12 Contract API 1



Property 12 Contract API 2



API 2 v1
Rainforest
Old Growth

138.41 Ha
17.66 Ha



Disclaimer: Dimensions and locations are approximate. Liability is disclaimed for any error, omissions or inaccuracies contained within or arising from information on this map.

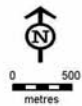
API 2 v2
Rainforest
Old Growth

138.78 Ha
8.9 Ha

API 2 v3
Rainforest
Old Growth

138.78 Ha
16.44 Ha

LEGEND



PROJECTION: GDA94 MGA ZONE 56