

3.2 Individual Property Results

The results presented in the figures below show Old-Growth and Rainforest mapping performed by CRAFTI, DECCW, and the two API contractors.

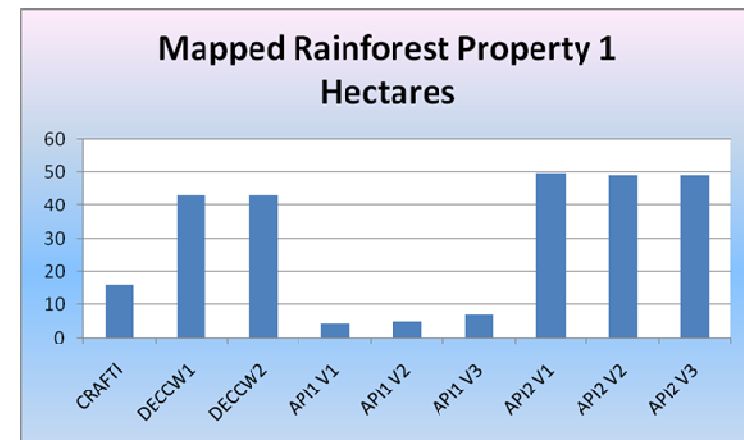
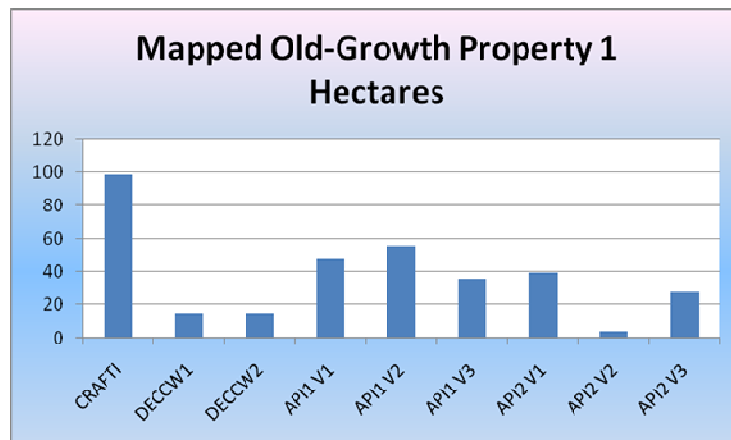
Qualification: The DECCW assessment of Old-Growth and Rainforest has been subject to review by the landholder, whereas the CRAFTI and Contractor mapping has not. This review by the landholder will act to decrease the amount of Old-growth and rainforest. As such the CRAFTI and Contractor mapping is not directly comparable to DECCW assessment, it would have to be subject to landholder scrutiny and re-mapping to be considered at the same level.

3.2.1 Property 1

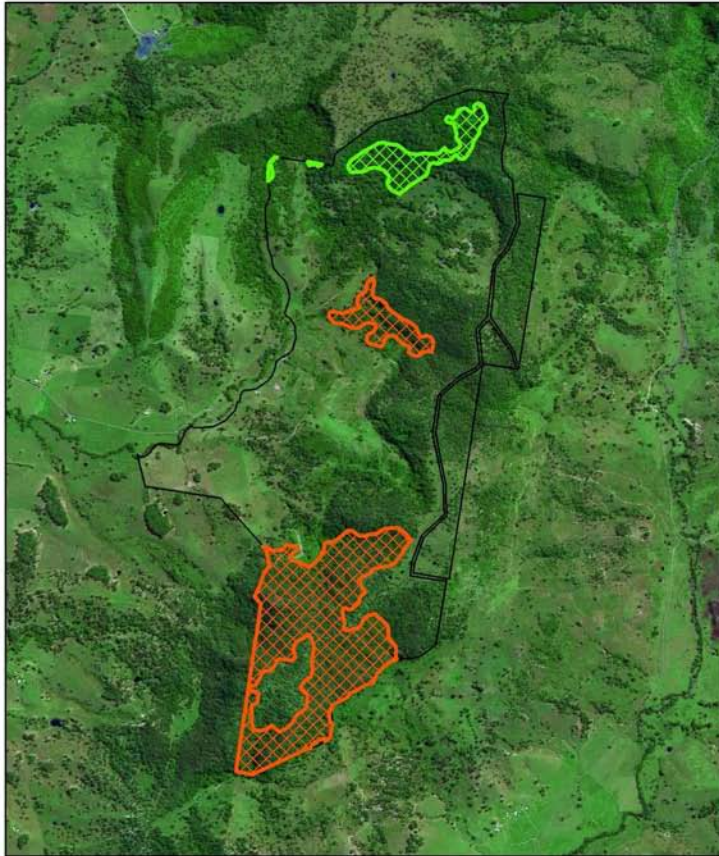
Overview of DECCW procedure: Landholder disputed CRAFTI mapping. DECCW office-based assessment was accepted by the landholder. No field inspection was undertaken for the purpose of assessing Old-Growth forest or Rainforest. Contract API : version 1 - initial office-based API; version 2 - brief field inspection (no transects); version 3 – after transects measured *on other properties*.

Mapped Old-Growth Property 1	
Source	Hectares
CRAFTI	98
DECCW1	15
DECCW2	15
API1 V1	48
API1 V2	56
API1 V3	35
API2 V1	39
API2 V2	4
API2 V3	28

Mapped Rainforest Property 1	
Source	Hectares
CRAFTI	16
DECCW1	43
DECCW2	43
API1 V1	4
API1 V2	5
API1 V3	7
API2 V1	50
API2 V2	49
API2 V3	49



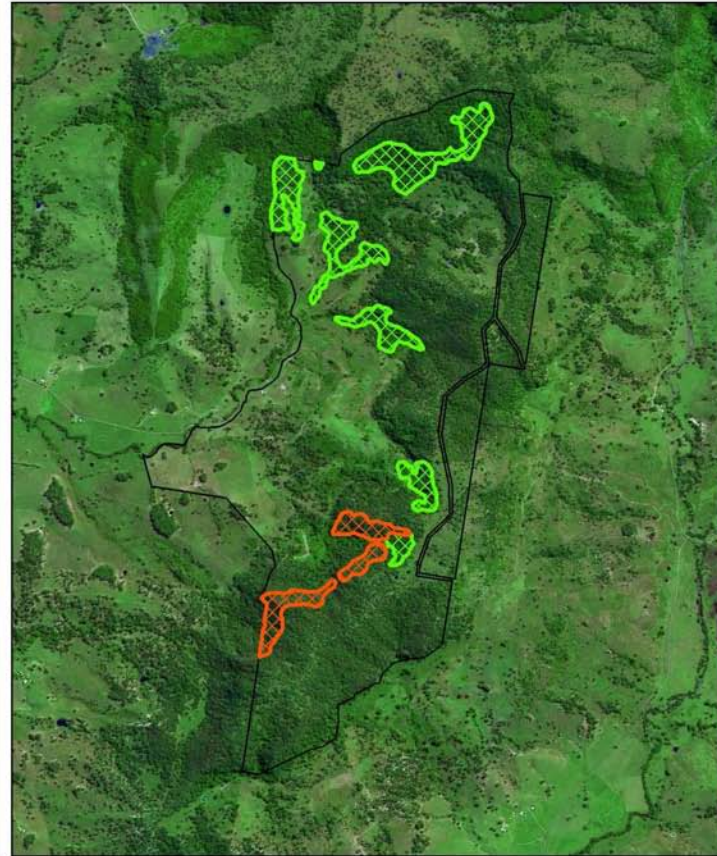
Property 1 CRAFTI, DECCW



Crafti Mapping
 Rainforest 15.92 Ha
 Old Growth 98.46 Ha

AIRIAL ACQUISITIONS
 18.10.2019

Disclaimer: Dimensions and locations are approximate. Liability is disclaimed for any error, omissions or inaccuracies contained within or arising from information on this map.



DECCW Mapping
 Note DECCW Mapping accepted by landholder - no field inspection
 Rainforest 43 Ha
 Old Growth 14.61 Ha

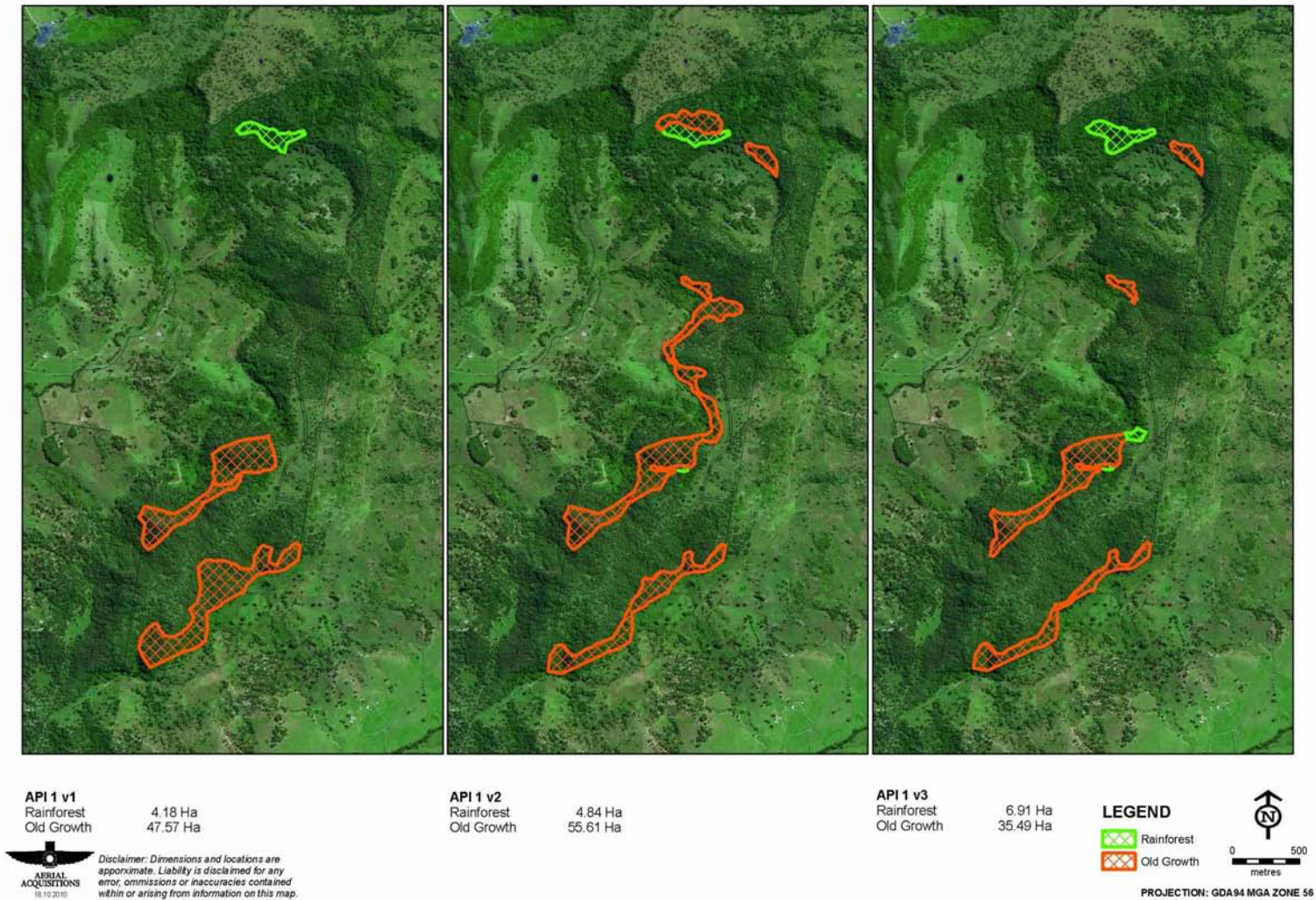
LEGEND

Green hatched box: Rainforest
 Orange hatched box: Old Growth

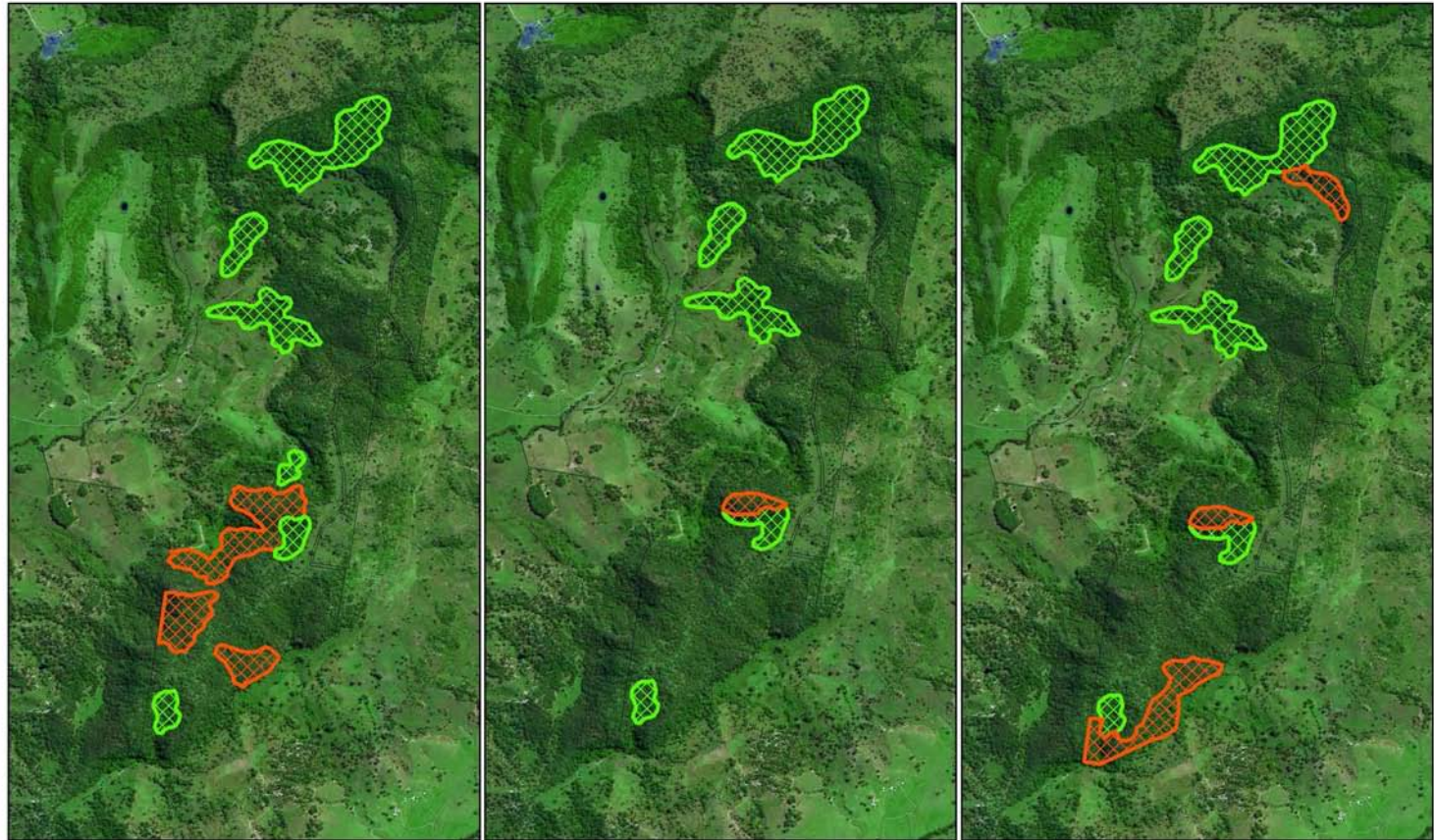
0 500 metres

PROJECTION: GDA94 MGA ZONE 56

Property 1 Contract API 1



Property 1 Contract API 2



API 2 v1
Rainforest 49.77 Ha
Old Growth 38.91 Ha



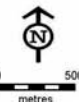
Disclaimer: Dimensions and locations are approximate. Liability is disclaimed for any error, omissions or inaccuracies contained within or arising from information on this map.

API 2 v2
Rainforest 48.95 Ha
Old Growth 4.1 Ha

API 2 v3
Rainforest 48.95 Ha
Old Growth 28.2 Ha

LEGEND

 Rainforest
 Old Growth



PROJECTION: GDA94 MGA ZONE 56

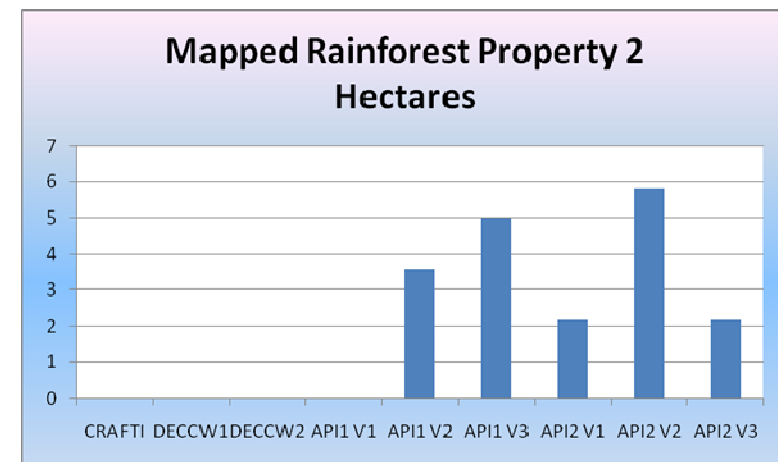
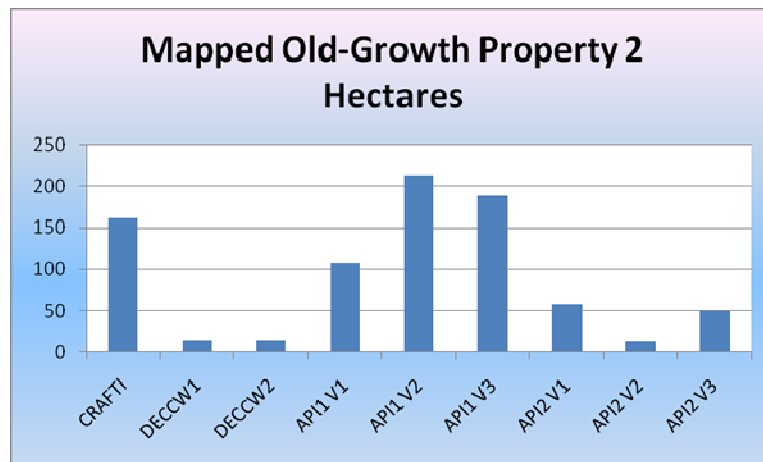
3.2.2 Property 2

Overview of DECCW procedure: Landholder disputed CRAFTI mapping. DECCW office-based assessment was accepted by the landholder. No field inspection was undertaken for the purpose of assessing Old-Growth forest or Rainforest.

Contract API : version 1 - initial office-based API; version 2 - brief field inspection (no transects); version 3 – after transects measured on other properties.

Mapped Old-Growth Property 2	
Source	Hectares
CRAFTI	162
DECCW1	14
DECCW2	14
API1 V1	108
API1 V2	213
API1 V3	188
API2 V1	58
API2 V2	13
API2 V3	50

Mapped Rainforest Property 2	
Source	Hectares
CRAFTI	0
DECCW1	0
DECCW2	0
API1 V1	0
API1 V2	4
API1 V3	5
API2 V1	2
API2 V2	6
API2 V3	2



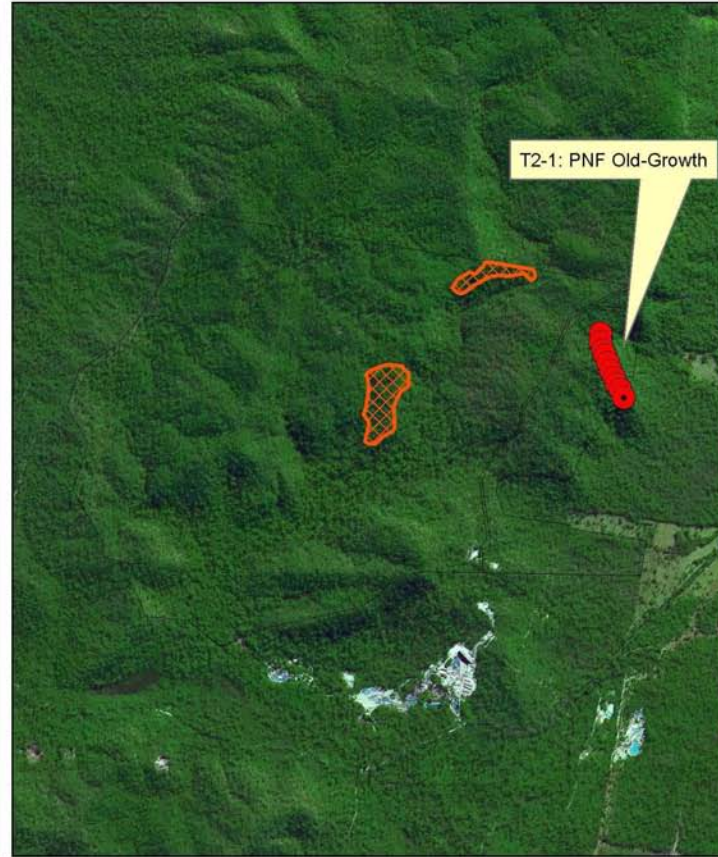
Property 2 CRAFTI, DECCW

**Crafti Mapping**

Rainforest 0 Ha
Old Growth 161.62 Ha



Disclaimer: Dimensions and locations are approximate. Liability is disclaimed for any error, omissions or inaccuracies contained within or arising from information on this map.

**DECCW Mapping**

Note DECCW Mapping accepted by landholder - no field inspection

Rainforest 0 Ha
Old Growth 14.01 Ha

LEGEND

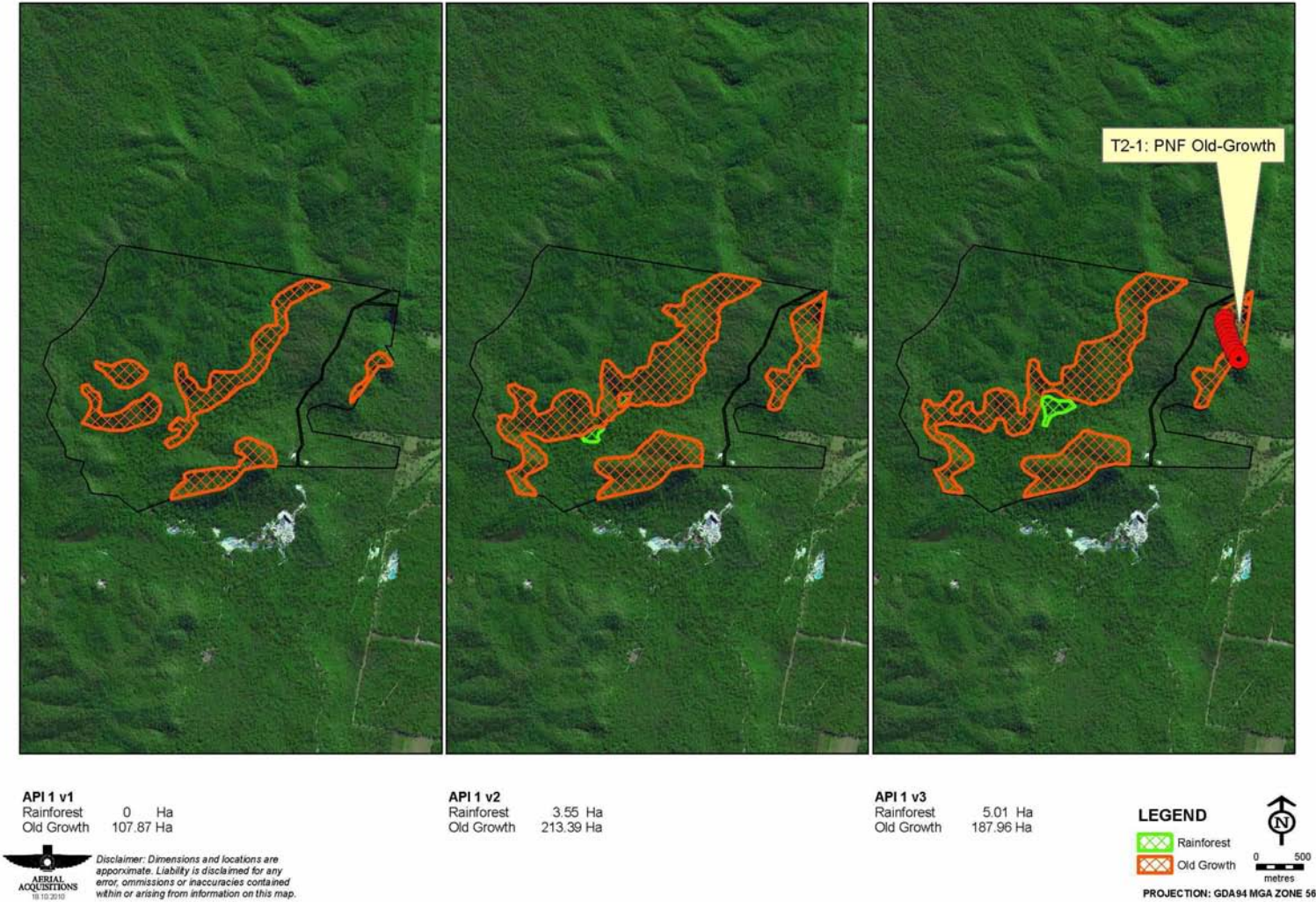
 Rainforest
 Old Growth



0 500
metres

PROJECTION: GDA94 MGA ZONE 56

Property 2 Contract API 1



Property 2 Contract API 2



API 2 v1
Rainforest 2.17 Ha
Old Growth 58.30 Ha



Disclaimer: Dimensions and locations are approximate. Liability is disclaimed for any error, omissions or inaccuracies contained within or arising from information on this map.

API 2 v2
Rainforest 5.82 Ha
Old Growth 13.16 Ha

API 2 v3
Rainforest 2.17 Ha
Old Growth 50.17 Ha

LEGEND



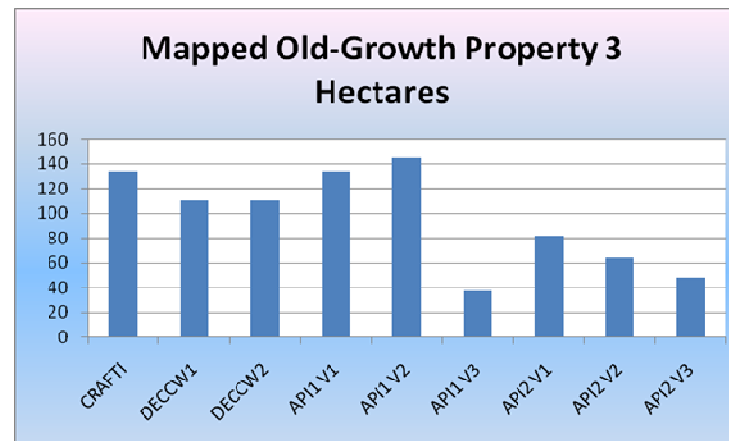
PROJECTION: GDA94 MGA ZONE 56

3.2.3 Property 3

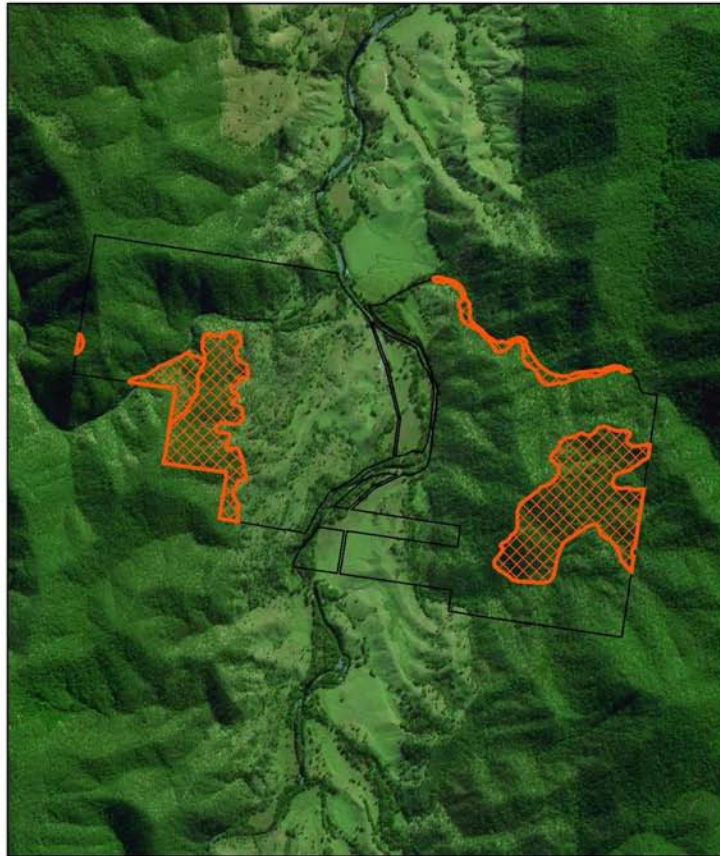
Overview of DECCW procedure: Landholder disputed CRAFTI mapping. DECCW office-based assessment was accepted by the landholder. No field inspection was undertaken for the purpose of assessing Old-Growth forest or Rainforest.

Contract API : version 1 - initial office-based API; version 2 - brief field inspection of *other properties* (no transects); version 3 – after transects measured *on other properties*. No rainforest was identified.

Mapped Old-Growth Property 3	
Source	Hectares
CRAFTI	134
DECCW1	110
DECCW2	110
API1 V1	134
API1 V2	145
API1 V3	37
API2 V1	82
API2 V2	64
API2 V3	49



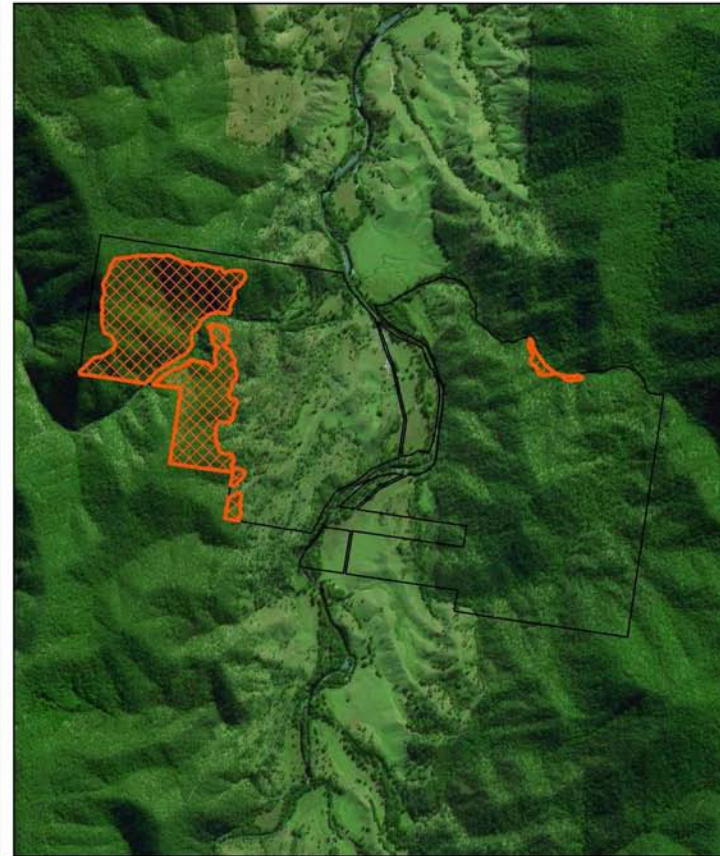
Property 3 CRAFTI, DECCW



Crafti Mapping
 Rainforest 0 Ha
 Old Growth 134.13 Ha

AERIAL ACQUISITIONS
 15.10.2010

Disclaimer: Dimensions and locations are approximate. Liability is disclaimed for any error, omissions or inaccuracies contained within or arising from information on this map.



DECCW Mapping
 Note DECCW Mapping accepted by landholder - no field inspection
 Rainforest 0 Ha
 Old Growth 110.12 Ha

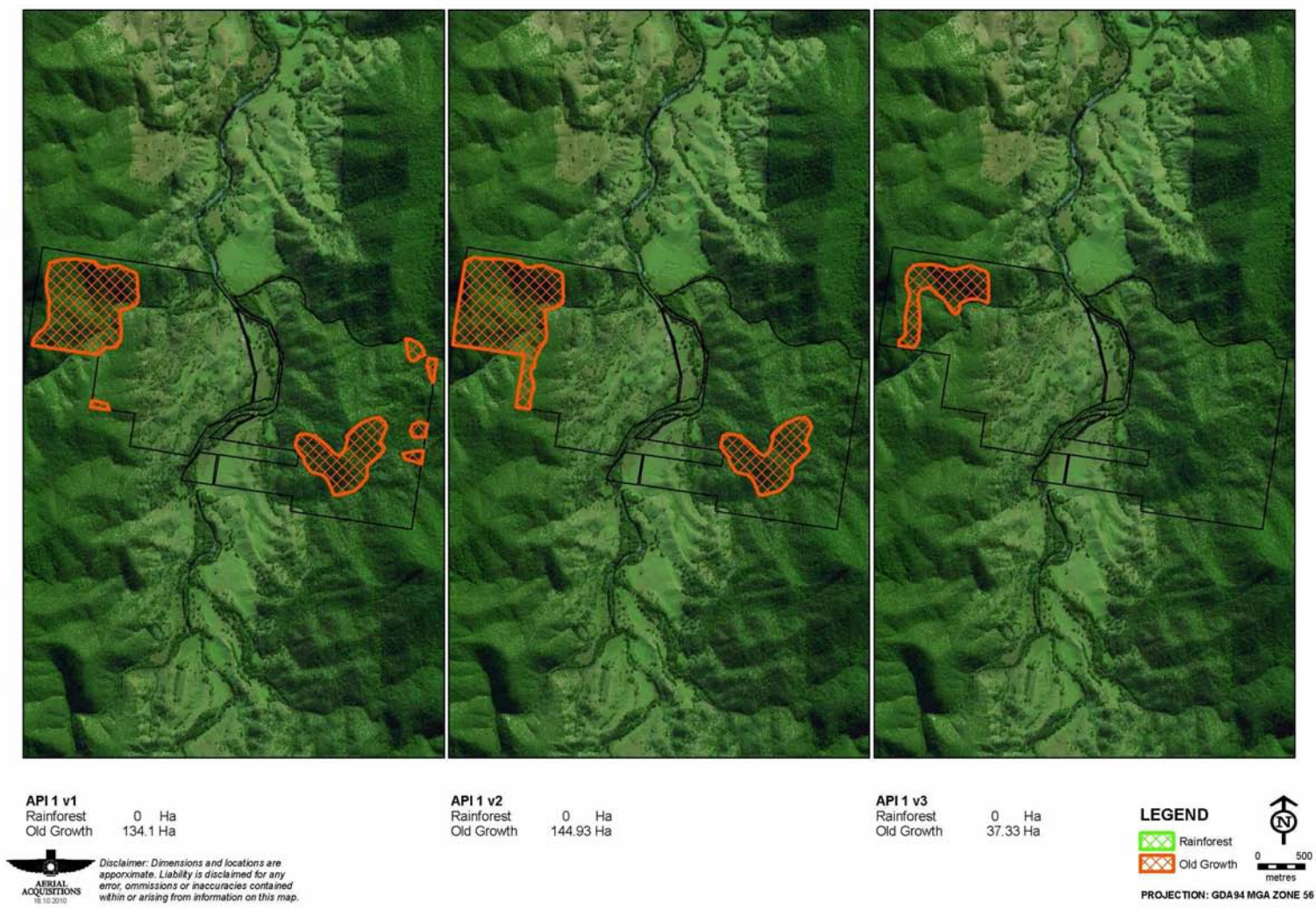
LEGEND

 Rainforest
 Old Growth

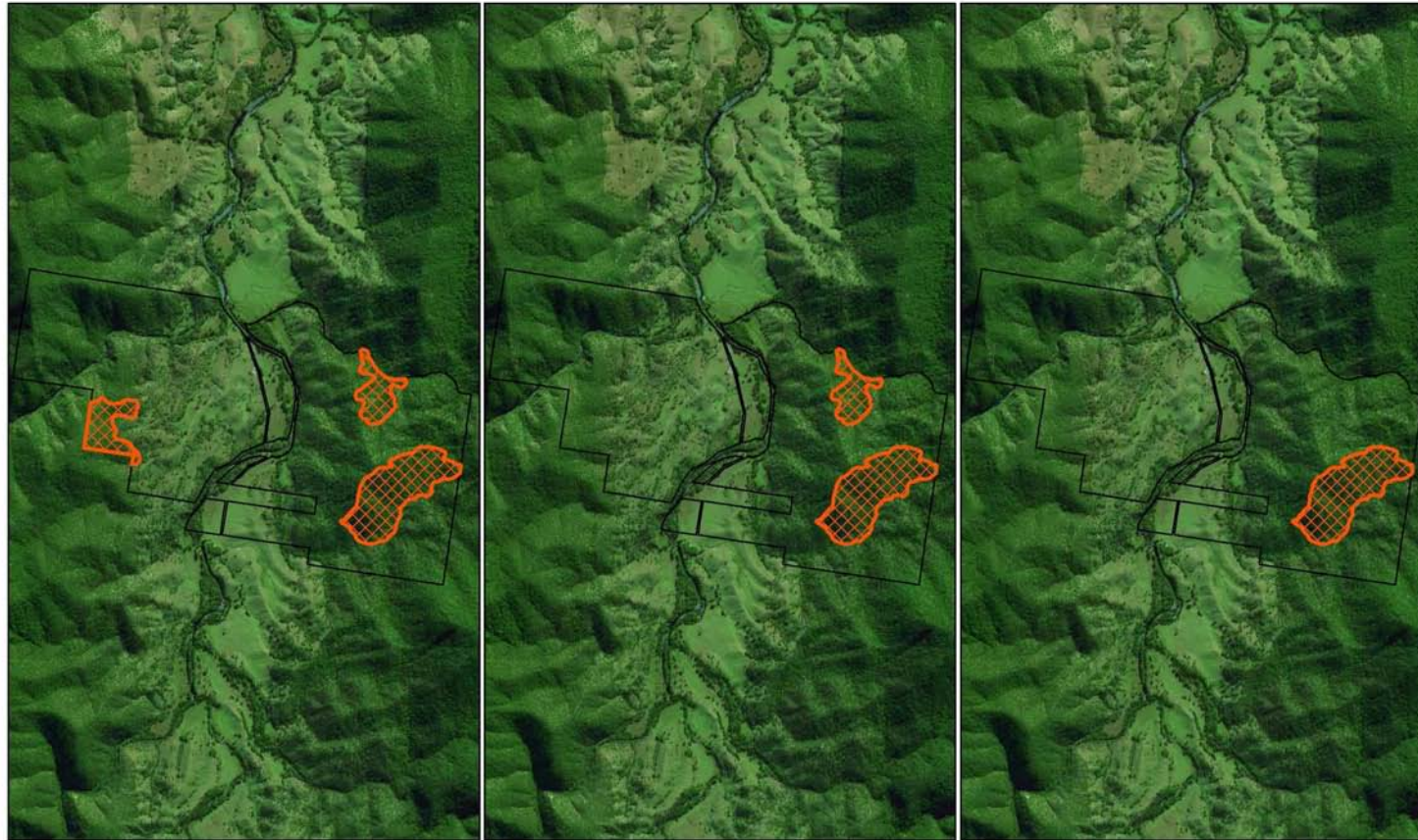

 0 500
 metres

PROJECTION: GDA94 MGA ZONE 56

Property 3 Contract API 1



Property 3 Contract API 2



API 2 v1
Rainforest 0 Ha
Old Growth 81.8 Ha



Disclaimer: Dimensions and locations are approximate. Liability is disclaimed for any error, omissions or inaccuracies contained within or arising from information on this map.

API 2 v2
Rainforest 0 Ha
Old Growth 63.91 Ha

API 2 v3
Rainforest 0 Ha
Old Growth 48.55 Ha

LEGEND

 Rainforest
 Old Growth



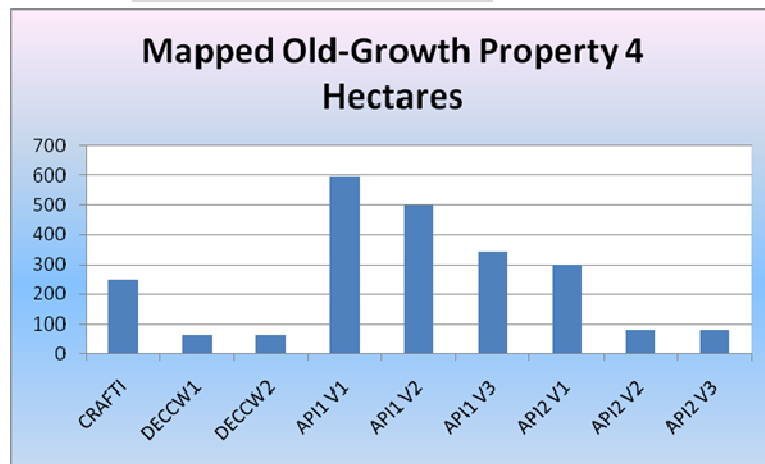
PROJECTION: GDA94 MGA ZONE 56

3.2.4 Property 4

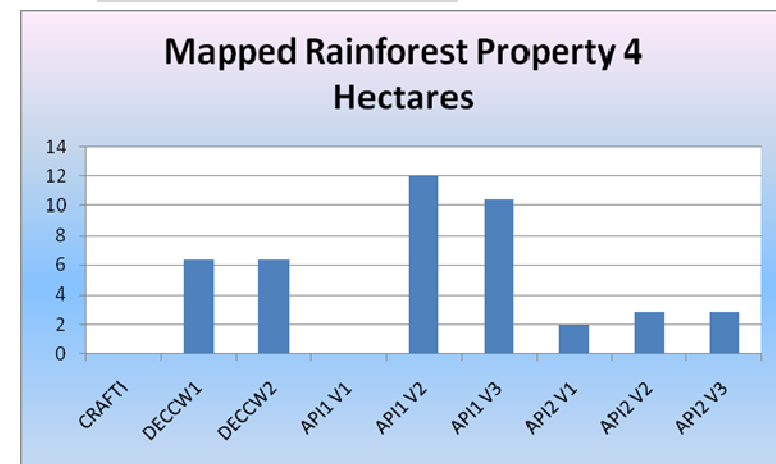
Overview of DECCW procedure: Landholder disputed CRAFTI mapping. DECCW office-based assessment was accepted by the landholder. No field inspection was undertaken for the purpose of assessing Old-Growth forest or Rainforest.

Contract API : version 1 - initial office-based API; version 2 - brief field inspection of *other properties* (no transects); version 3 – after transects measured on property *on other properties*

Mapped Old-Growth Property 4	
Source	Hectares
CRAFTI	251
DECCW1	63
DECCW2	63
API1 V1	597
API1 V2	500
API1 V3	345
API2 V1	301
API2 V2	81
API2 V3	81




Mapped Rainforest Property 4	
Source	Hectares
CRAFTI	0
DECCW1	6.35
DECCW2	6.35
API1 V1	0
API1 V2	12.07
API1 V3	10.42
API2 V1	1.95
API2 V2	2.84
API2 V3	2.84



Property 4 CRAFTI, DECCW



Crafti Mapping
Rainforest 0 Ha
Old Growth 250.63 Ha



 **AERIAL ACQUISITIONS**
18.10.2010


Disclaimer: Dimensions and locations are approximate. Liability is disclaimed for any error, omissions or inaccuracies contained within or arising from information on this map.



DECCW Mapping
Note DECCW Mapping accepted by landholder - no field inspection
Rainforest 6.3 Ha
Old Growth 63 Ha

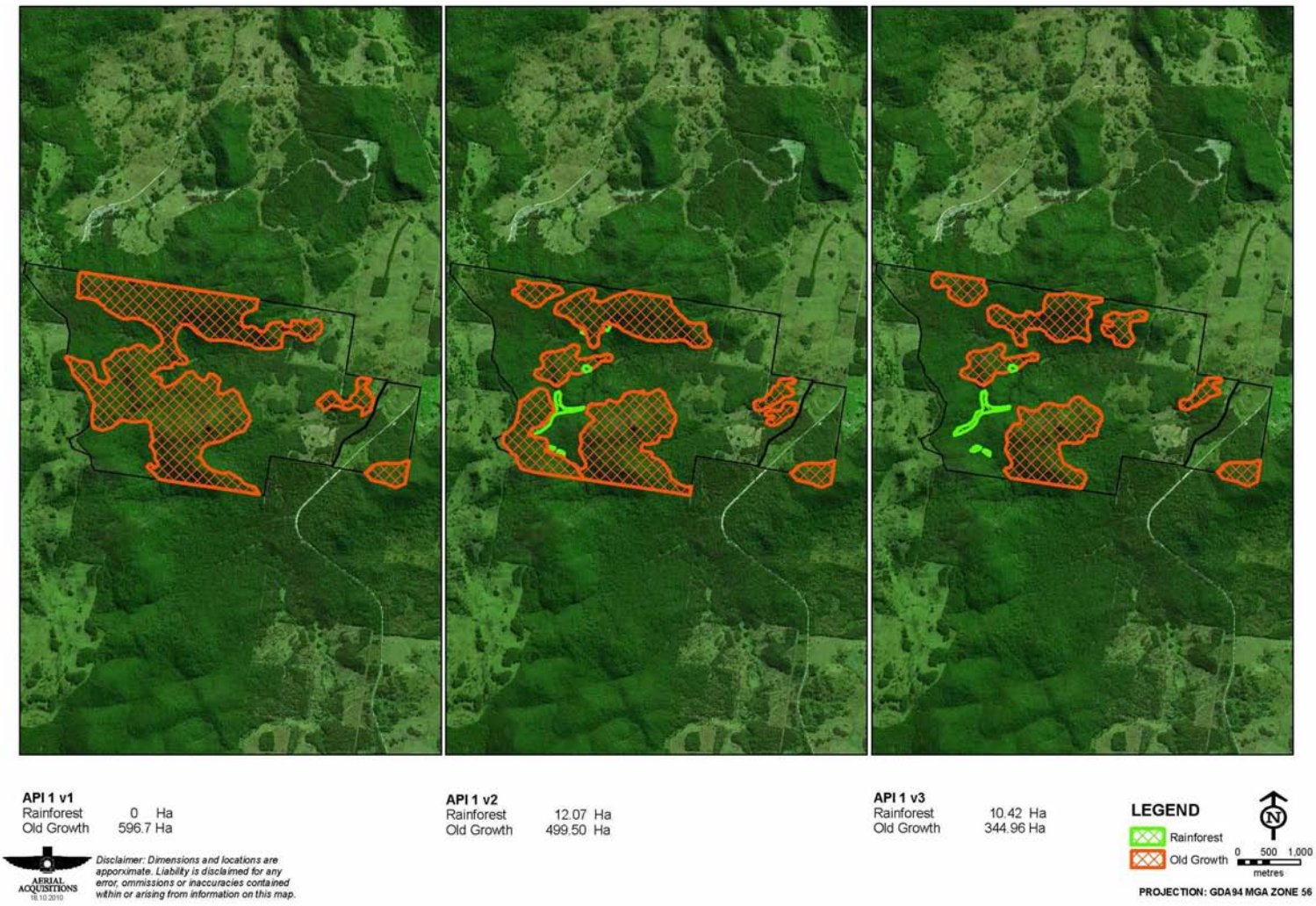
LEGEND

 Rainforest
 Old Growth

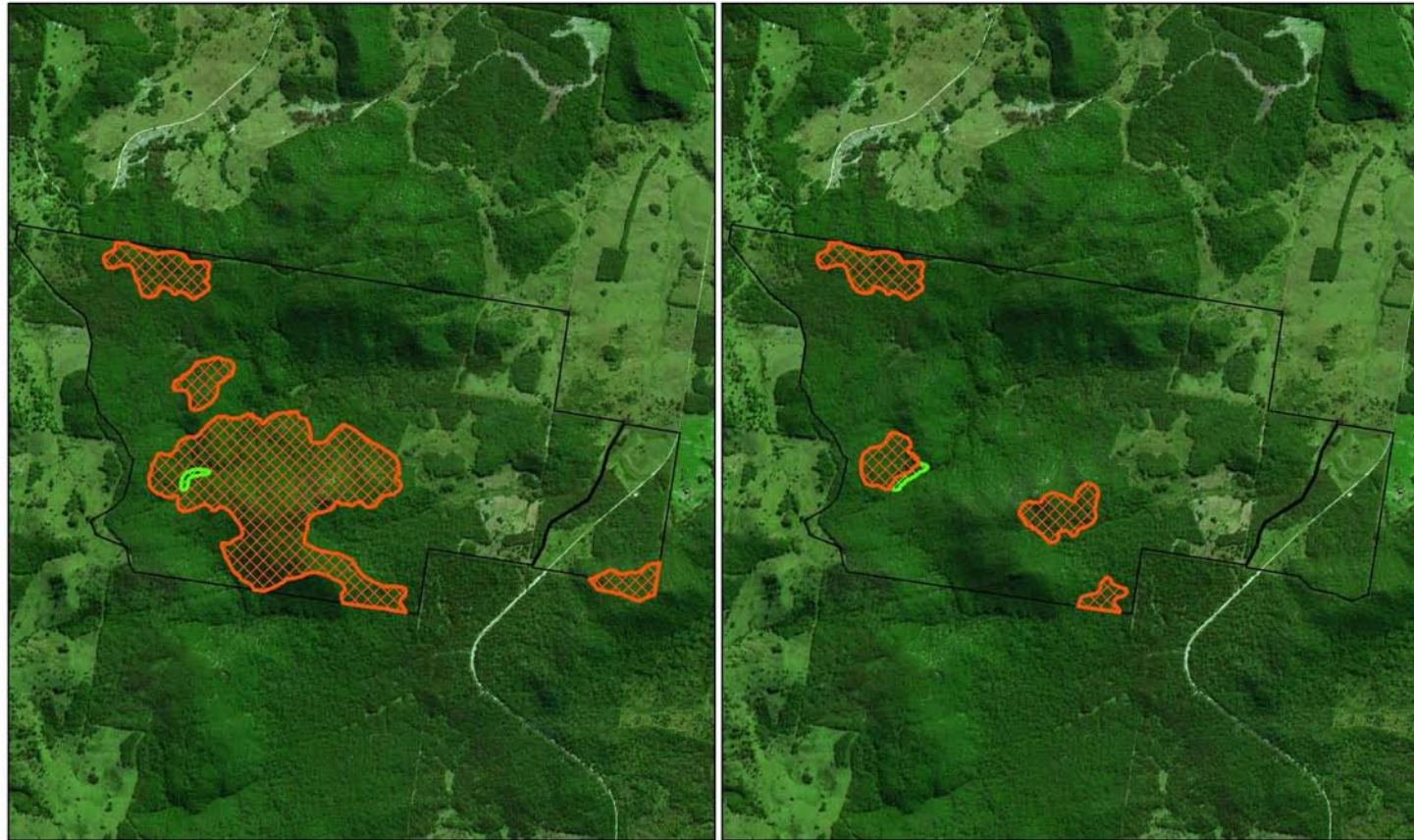

0 500 1,000
metres

PROJECTION: GDA94 MGA ZONE 56

Property 4 Contract API 1



Property 4 Contract API 2



API 2 v1
 Rainforest 1.95 Ha
 Old Growth 303.01 Ha

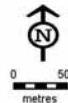


Disclaimer: Dimensions and locations are approximate. Liability is disclaimed for any error, omissions or inaccuracies contained within or arising from information on this map.

API 2 v2 and V3
 Note NO DIFFERENCE BETWEEN V2 and V3
 Rainforest 2.84 Ha
 Old Growth 81.09 Ha

LEGEND

 Rainforest
 Old Growth



PROJECTION: GDA94 MGA ZONE 56

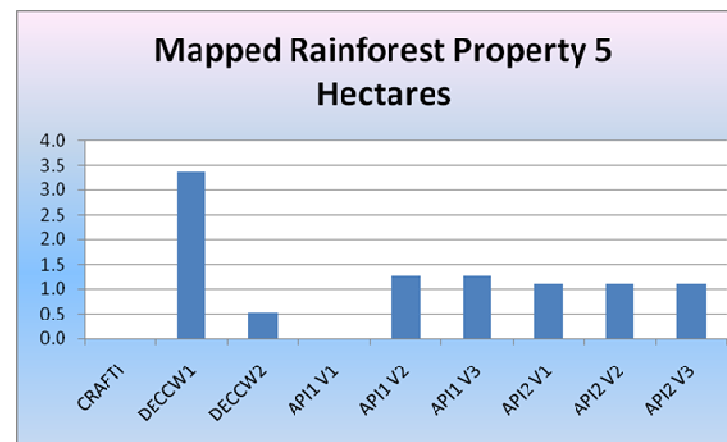
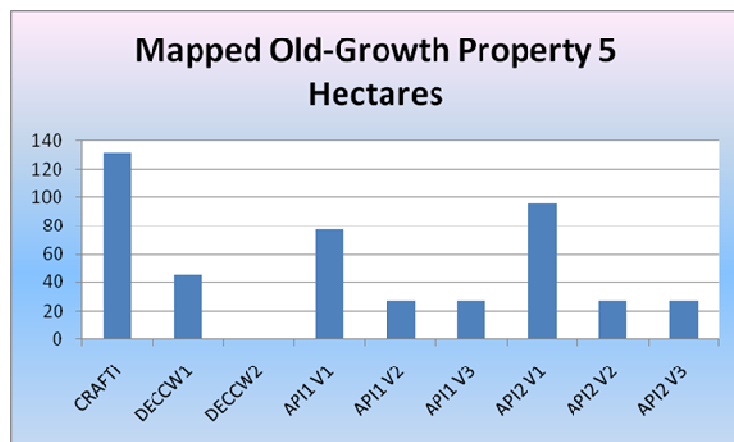
3.2.5 Property 5

Overview of DECCW procedure: Landholder disputed CRAFTI mapping. DECCW office-based re-assessment was accepted by the landholder. Field inspection was undertaken for the purpose of assessing Old-Growth forest or Rainforest.

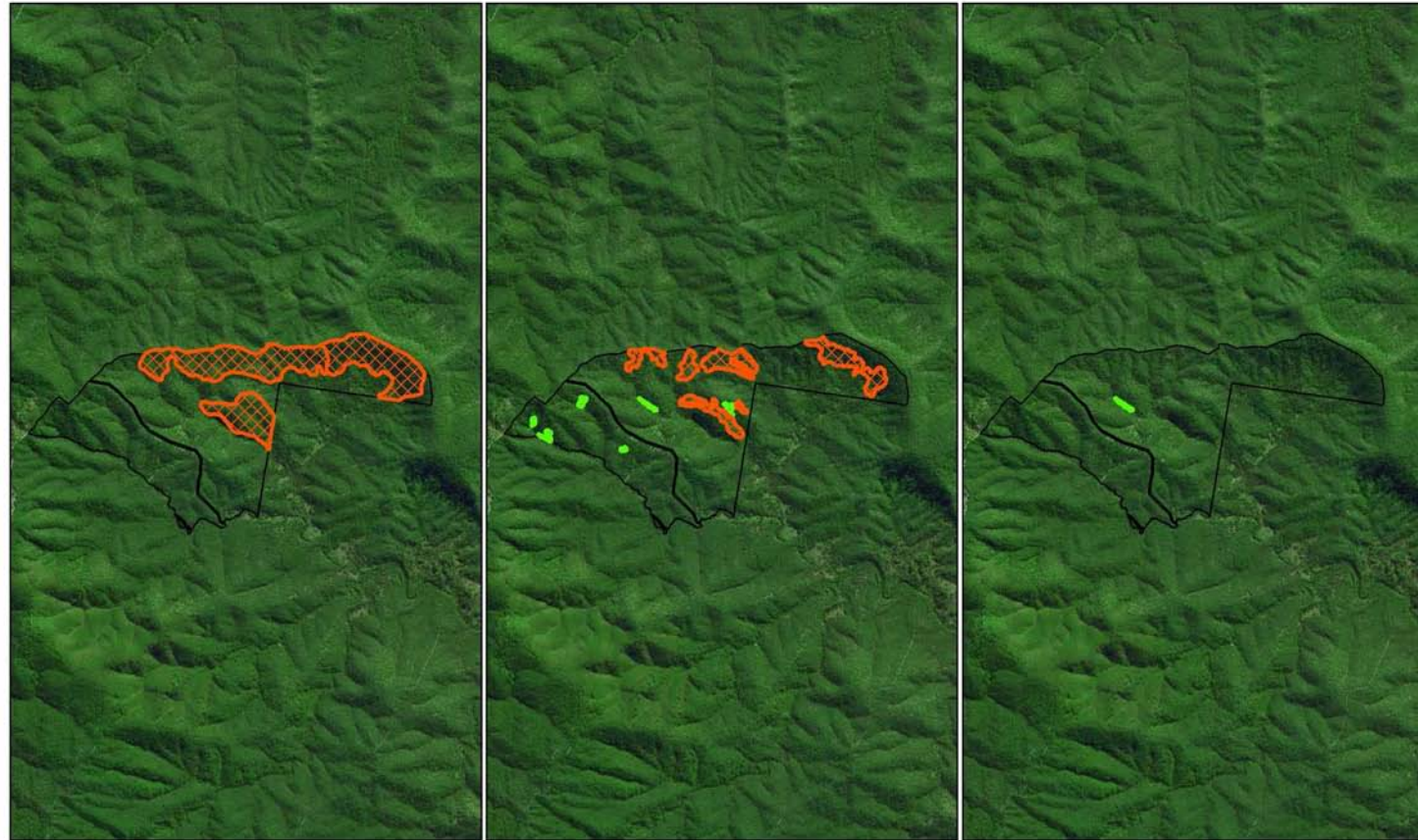
Contract API : version 1 - initial office-based API; version 2 - brief field inspection (no transects); version 3 – after transects measured *on other properties*

Mapped Old-Growth Property 5	
Source	Hectares
CRAFTI	132
DECCW1	45
DECCW2	0
API1 V1	77
API1 V2	27
API1 V3	27
API2 V1	96
API2 V2	27
API2 V3	27

Mapped Rainforest Property 5	
Source	Hectares
CRAFTI	0.0
DECCW1	3.4
DECCW2	0.5
API1 V1	0.0
API1 V2	1.3
API1 V3	1.3
API2 V1	1.1
API2 V2	1.1
API2 V3	1.1



Property 5 CRAFTI, DECCW

**Crafti Mapping**

Rainforest 0 Ha
Old Growth 131.78 Ha



Disclaimer: Dimensions and locations are approximate. Liability is disclaimed for any error, omissions or inaccuracies contained within or arising from information on this map.

DECCW Pre Mapping

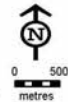
Rainforest 45 Ha
Old Growth 3 Ha

DECCW Final Mapping

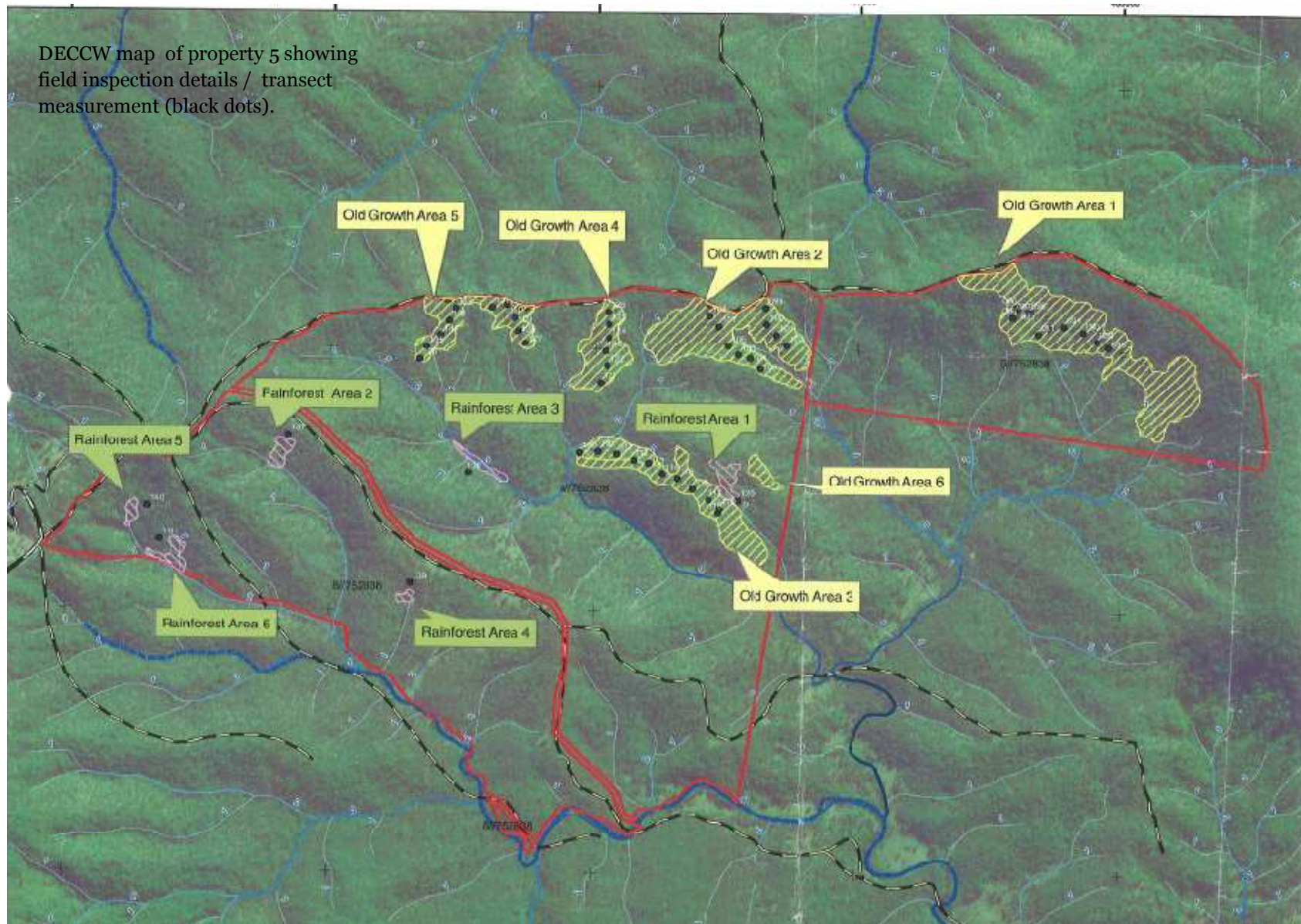
Rainforest 1 Ha
Old Growth 0 Ha

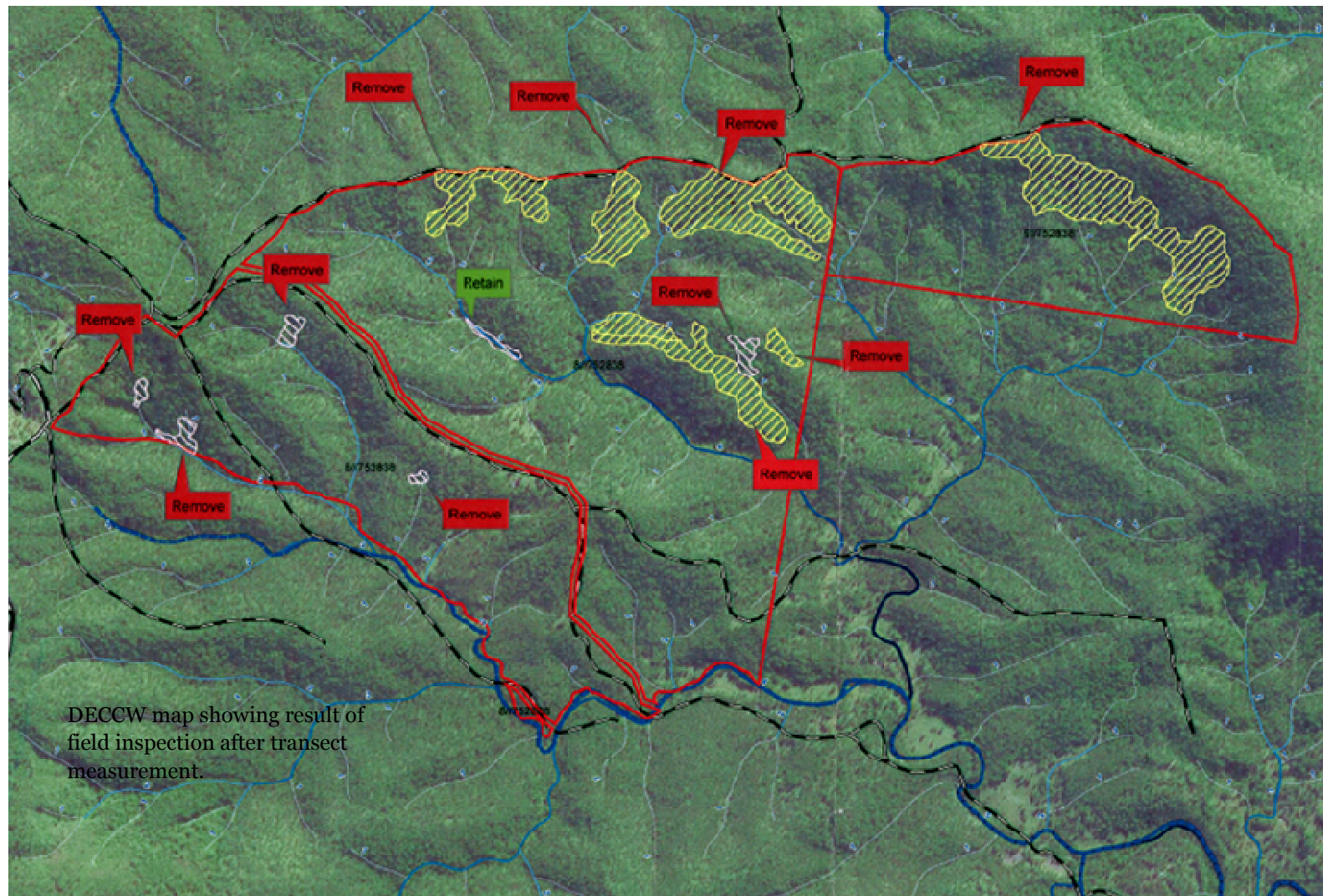
LEGEND

 Rainforest
 Old Growth



PROJECTION: GDA94 MGA ZONE 56





DECCW map showing result of field inspection after transect measurement.


Property 5 Contract API 1



Property 5 Contract API 2



API 2 v1
Rainforest 1.1 Ha
Old Growth 96.19 Ha

 Disclaimers: Dimensions and locations are approximate. Liability is disclaimed for any error, omissions or inaccuracies contained within or arising from information on this map.

API 2 v2 and v3
Note NO DIFFERENCE BETWEEN V2 and V3
Rainforest 1.1 Ha
Old Growth 26.89 Ha

LEGEND

 Rainforest
 Old Growth


0 500
metres

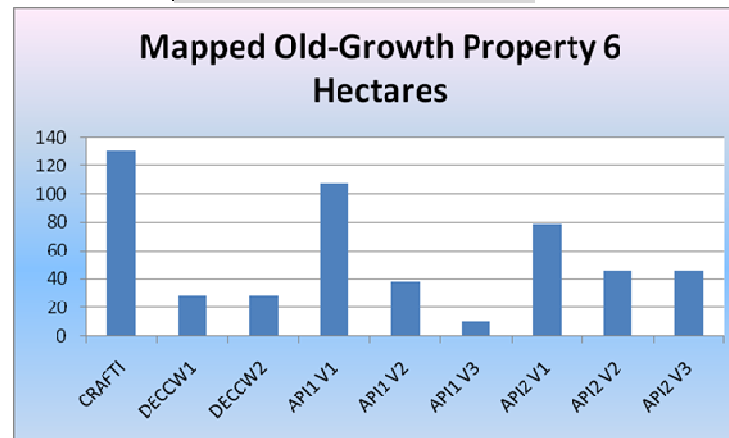
PROJECTION: GDA94 MGA ZONE 56

3.2.6 Property 6

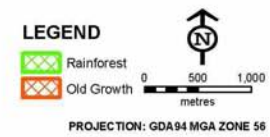
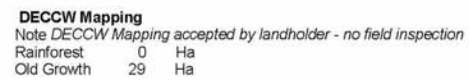
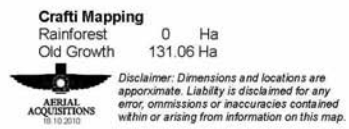
Overview of DECCW procedure: Landholder disputed CRAFTI mapping. DECCW office-based assessment was accepted by the landholder. Field inspection was not undertaken for the purpose of assessing Old-Growth forest or Rainforest.

Contract API : version 1 - initial office-based API; version 2 - brief field inspection (no transects); version 3 – after transects measured *on other properties*

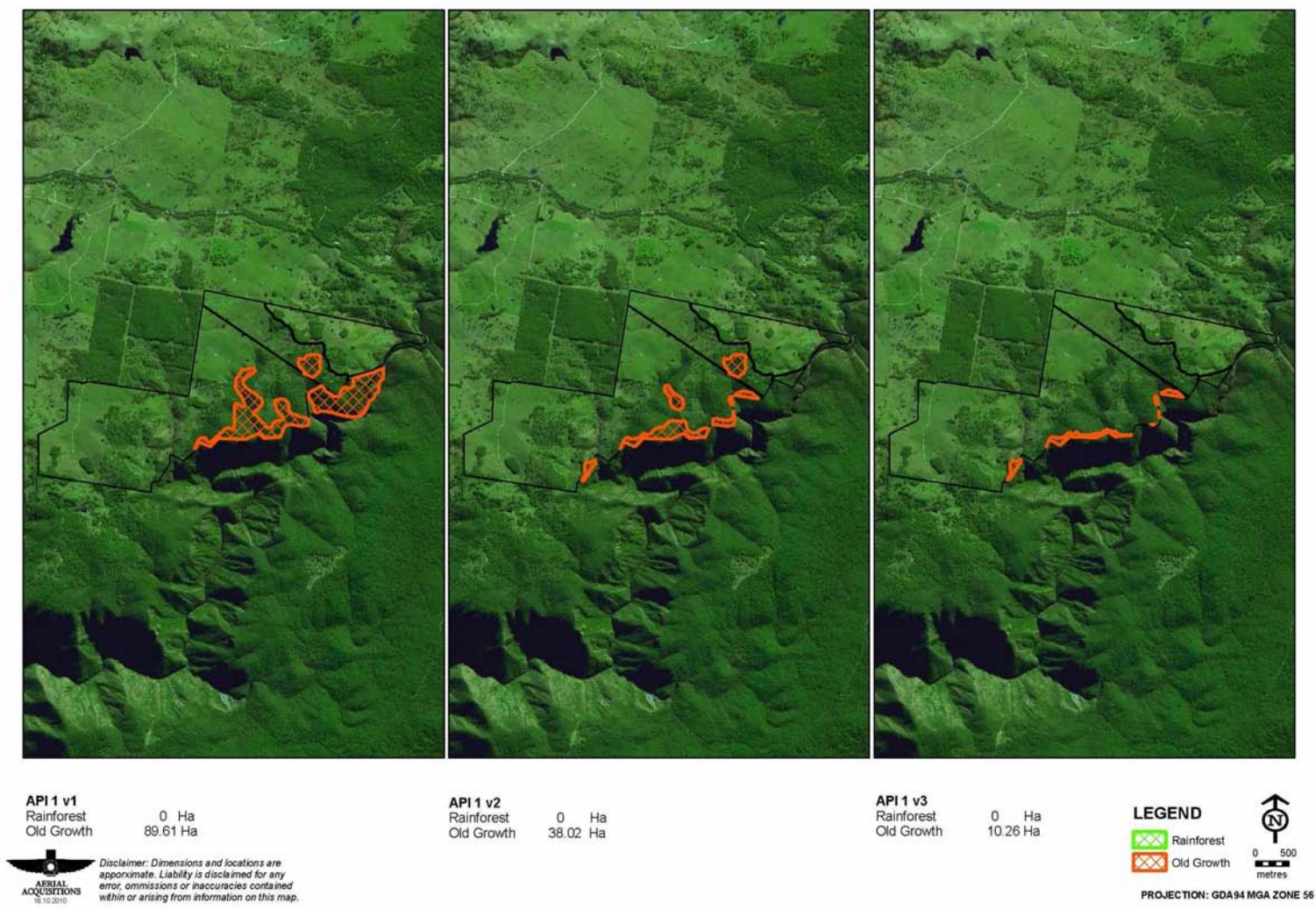
Mapped Old-Growth Property 6	
Source	Hectares
CRAFTI	131
DECCW1	29
DECCW2	29
API1 V1	108
API1 V2	38
API1 V3	10
API2 V1	79
API2 V2	46
API2 V3	46



Property 6 CRAFTI, DECCW




Property 6 Contract API 1



Property 6 Contract API 2



API 2 v1
 Rainforest 0 Ha
 Old Growth 78.87 Ha

 Disclaimers: Dimensions and locations are approximate. Liability is disclaimed for any error, omissions or inaccuracies contained within or arising from information on this map.

API 2 v2 and V3
 Note NO DIFFERENCE BETWEEN V2 and V3
 Rainforest 0 Ha
 Old Growth 46.04 Ha

LEGEND

 Rainforest
 Old Growth


 0 500
 metres

PROJECTION: GDA94 MGA ZONE 56