

## **Hunter Valley Coal Actions**

**Adam Gilligan**

**Regional Director North, NSW EPA**



# Major Sources (PM10)

ACTIVITY	KATESTONE	PRPs
Wheel generated dust	39%	47%
Wind erosion (overburden)	27%	9%
Bulldozers	8%	11%
Blasting	6%	2%
Trucks (loading / dumping overburden)	5%	16%
TOTAL	85%	85%



# PRP 1 – Wheel Generated Dust

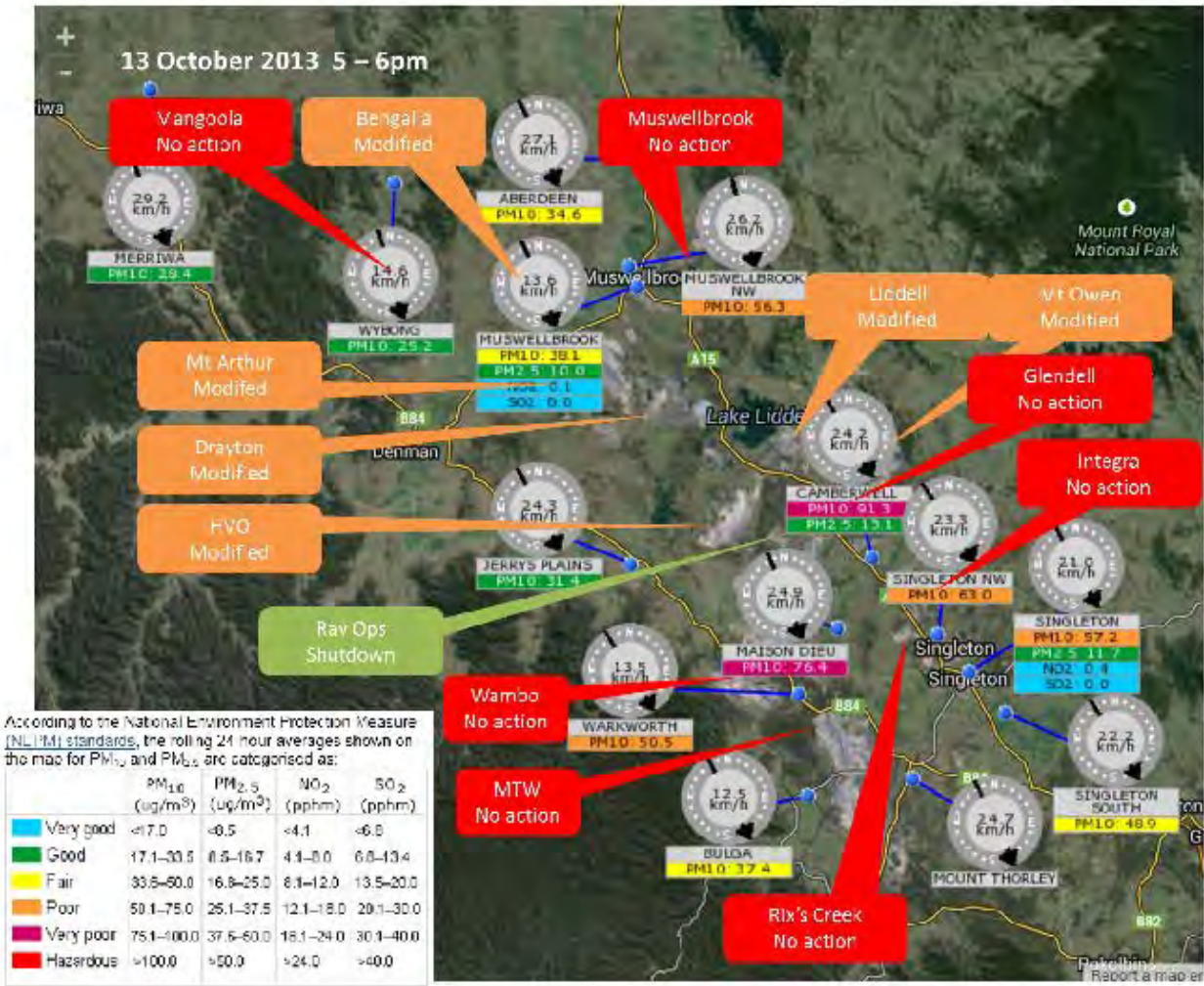
- Mines identified level of dust control achievable.
- EPA expects all mines to continue to achieve this level of dust control.
- Any failure to achieve this level of control may be regarded by the EPA as a failure to comply with licence conditions that require proper and efficient operation.





# PRP 2 – Adverse Weather

ATTACHMENT 1



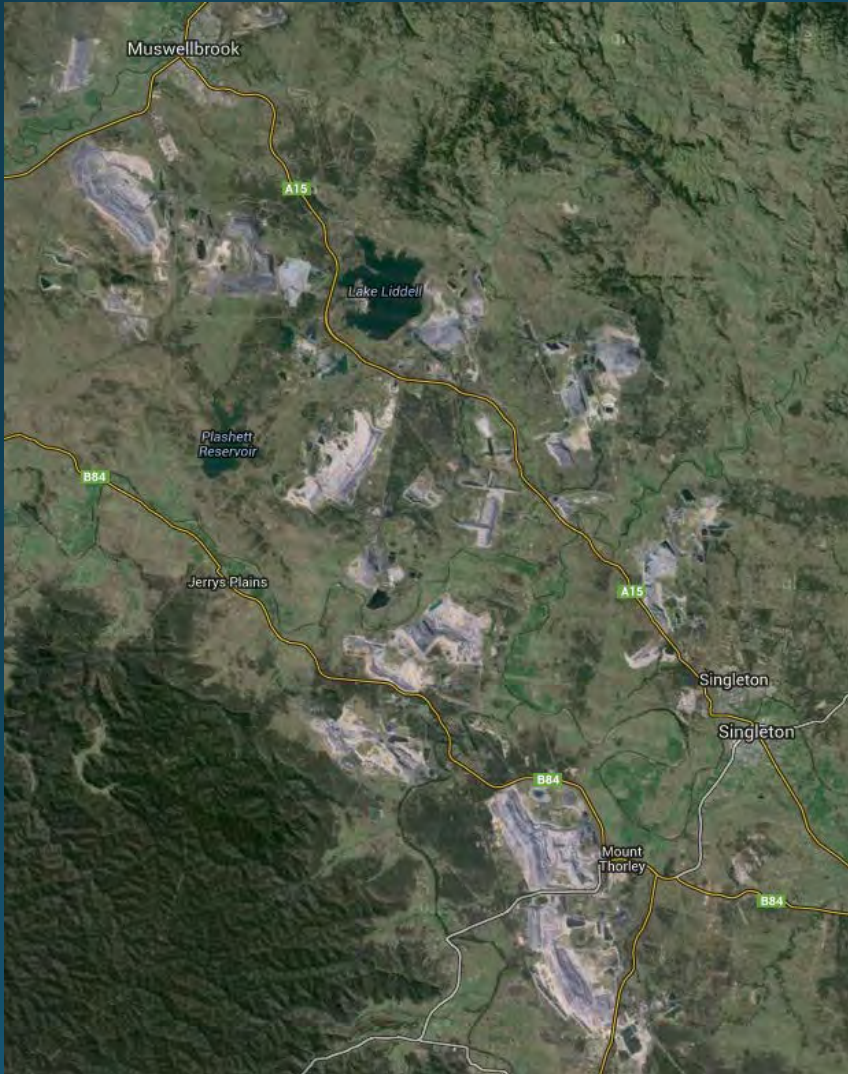
# PRP 3 – Industry Investigation





# PRP 4 – Assessment of Exposed Area

## Coal Mine Wind Erosion Exposed Land Assessment



### Objectives:

1. to quantify disturbed areas that are exposed to wind erosion; and
2. identify areas that can be stabilised to minimise dust.

# Blast fumes

## TOXIC SKY: Mine blast goes wrong

By JOANNE MCCARTHY Feb. 20, 2014, 10:30 p.m.



FALLOUT: The sky above Mount Arthur Mine near Muswellbrook turns a bright orange due to the toxic fumes.



# Dust Buster

- EPA's regulatory inspections
  - Unannounced surveillance
  - Aerial inspections
- Applies to all open cut coal mines in NSW





# Diesel emissions at coal mines





# Diesel emissions from locomotives





# EPA Compliance Audit

## Coal Train Loading and Unloading Facilities



# Coal loss from rail transport





# Coal loaders





# Coal shipping



# Clean Air Summit

---

**Adam Gilligan**

**Regional Director North, NSW EPA**